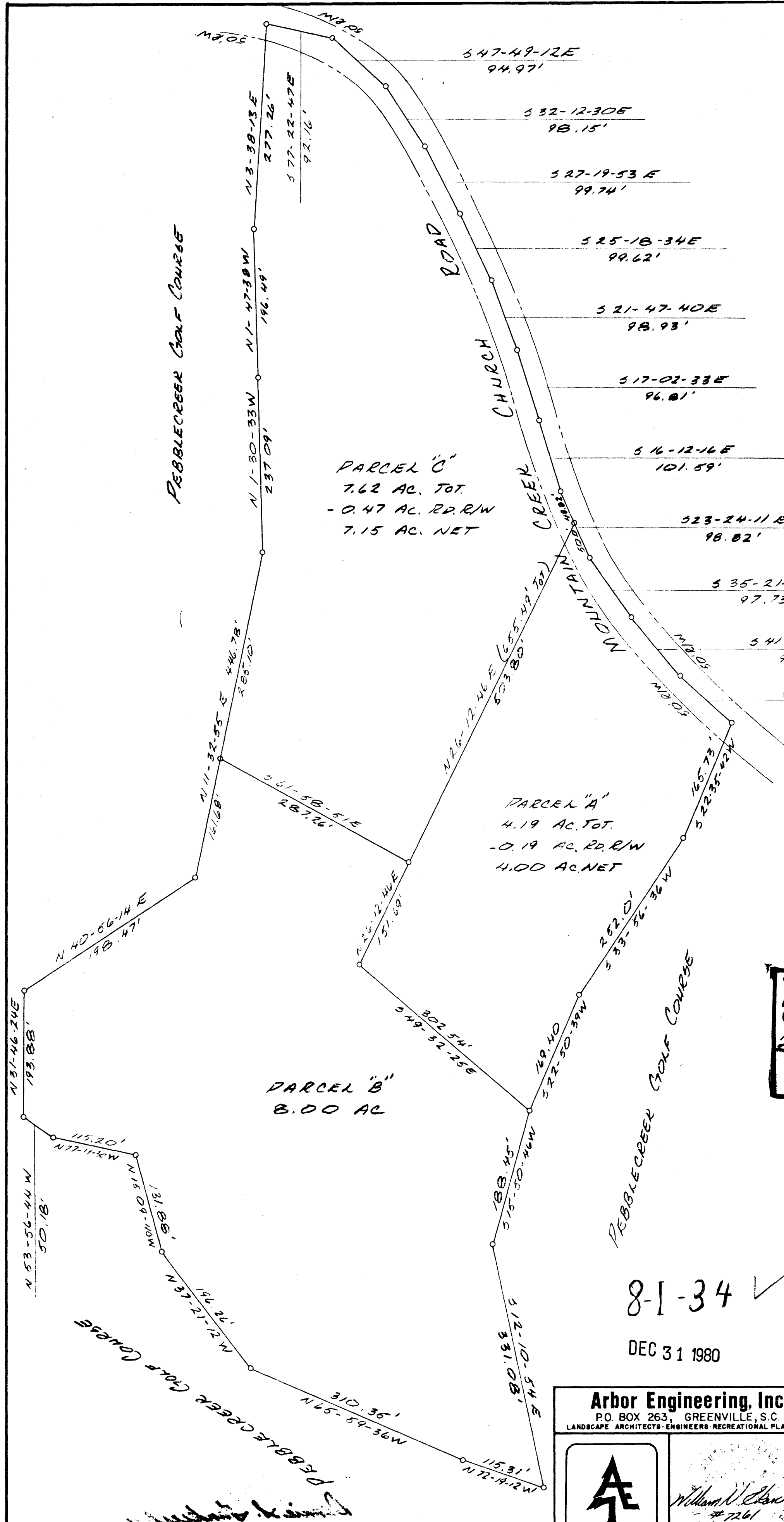
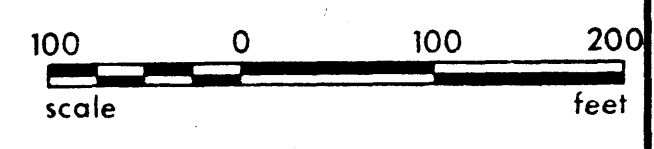
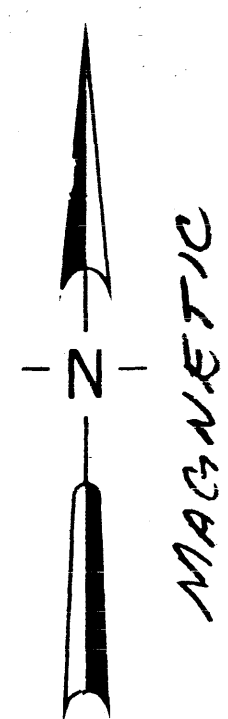


FILED  
GREENVILLE CO. S.C.  
Dec 31 3 44 PM '80  
DONNIE S. TANKERSLEY  
R.M.C.



PARCEL "C"  
7.62 AC. TOT.  
- 0.47 AC. RD. R/W  
7.15 AC. NET

PARCEL "A"  
4.19 AC. TOT.  
- 0.19 AC. RD. R/W  
4.00 AC. NET

PARCEL "B"  
8.00 AC

PARCEL "A" 70 UNITS 4 ACI  
PARCEL "B" 130 UNITS 8 ACI  
PARCEL "C" 144 UNITS 7.15 ACI

THIS PLAT IS NOT A SUBDIVISION  
AS DEFINED BY THE GREENVILLE  
COUNTY SUBDIVISION REGULATIONS.  
2/11/81 *Z.J. Forbes*  
Chairman, Secretary, or Director of  
Planning.  
Greenville County Planning Commission

NOTE:  
THIS IS A COMPOSITE PLAT  
AND DOES NOT CONSTITUTE AN  
ACTUAL FIELD SURVEY. ALL METERS  
AND BOUNDS TAKEN FROM PLAT  
BY PIEDMONT ARCHITECTS & ENGINEERS  
TITLED "BOUNDARY & TOPO FOR PEBBLE PART, LTD."  
DATED MAR. 19, 1980. ANY USE OF THIS  
DRAWING FOR REED DESCRIPTIONS OR REAL ESTATE  
TRANSACTIONS IS DONE SO WITH THE UNDERSTANDING  
THAT ARBOR ENGINEERING, INC. ACCEPTS NO RESPONSIBILITY  
FOR ITS ACCURACY OR CORRECTNESS.

8-1-34 ✓

DEC 31 1980

NO.	DATE	BY	DESCRIPTION	APPR.
REVISIONS				

**Arbor Engineering, Inc.**  
P.O. BOX 263, GREENVILLE, S.C.  
LANDSCAPE ARCHITECTS-ENGINEERS-RECREATIONAL PLANNERS

ARBOR ENGINEERING

*William N. Stewart*  
7261

SEAL

**PEBBLEPART LTD.**

**PARCELLIZATION MAP FOR  
PEBBLECREEK P.U.D.  
PHASE VII SECTION II**

GREENVILLE SOUTH CAROLINA

DRAWN WNS	DESIGN TAG	CHECK WNS	DATE 31 DEC 1980
SCALE 1" = 100'	FILE	DWG. NO. 80001-202	

*Michael J. King*