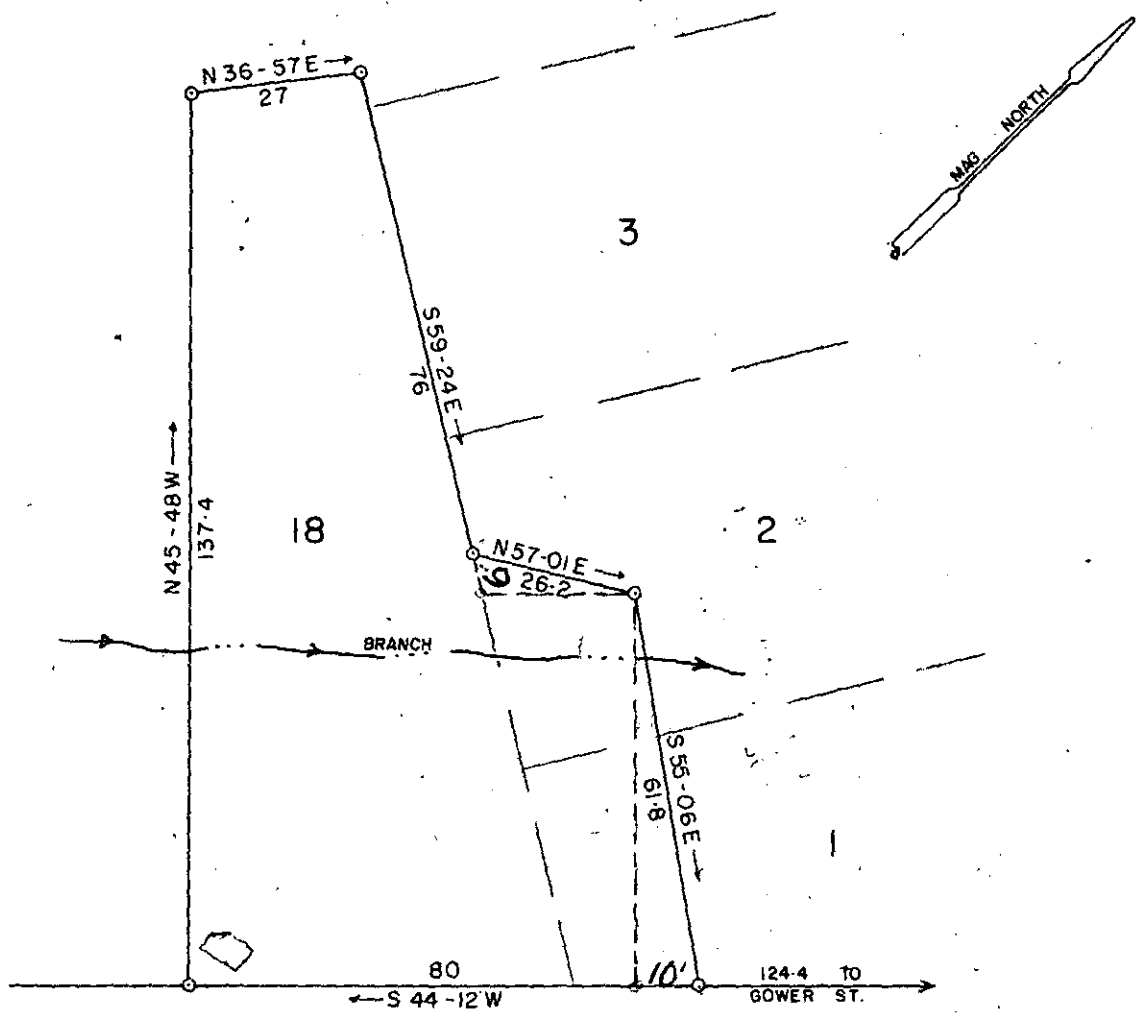


MICROFILMED

NB 163-1966
NB 212-1980



DOUTHIT ST.

**THIS PLAT IS NOT A SUBDIVISION
AS DEFINED BY THE GREENVILLE
COUNTY SUBDIVISION REGULATIONS.**

Oct 29, 1980 *Stephen W. Tanner*
 Chairman, Secretary, or Director of
 Planning.
 Greenville County Planning Commission

PROPERTY OF
C. H. CELY
 TRUSTEE

FILED
 GREENVILLE CO. S.C.
 OCT 29 3 23 PM '80
 DONNIE S. TANKERSLEY
 R.M.C.

GREENVILLE S. C.

SCALE 1"=30' AUG-28-80

13500

✓ 8-H-34
 OCT 29 1980

GC10 --- 10029 80 564 3 0001

