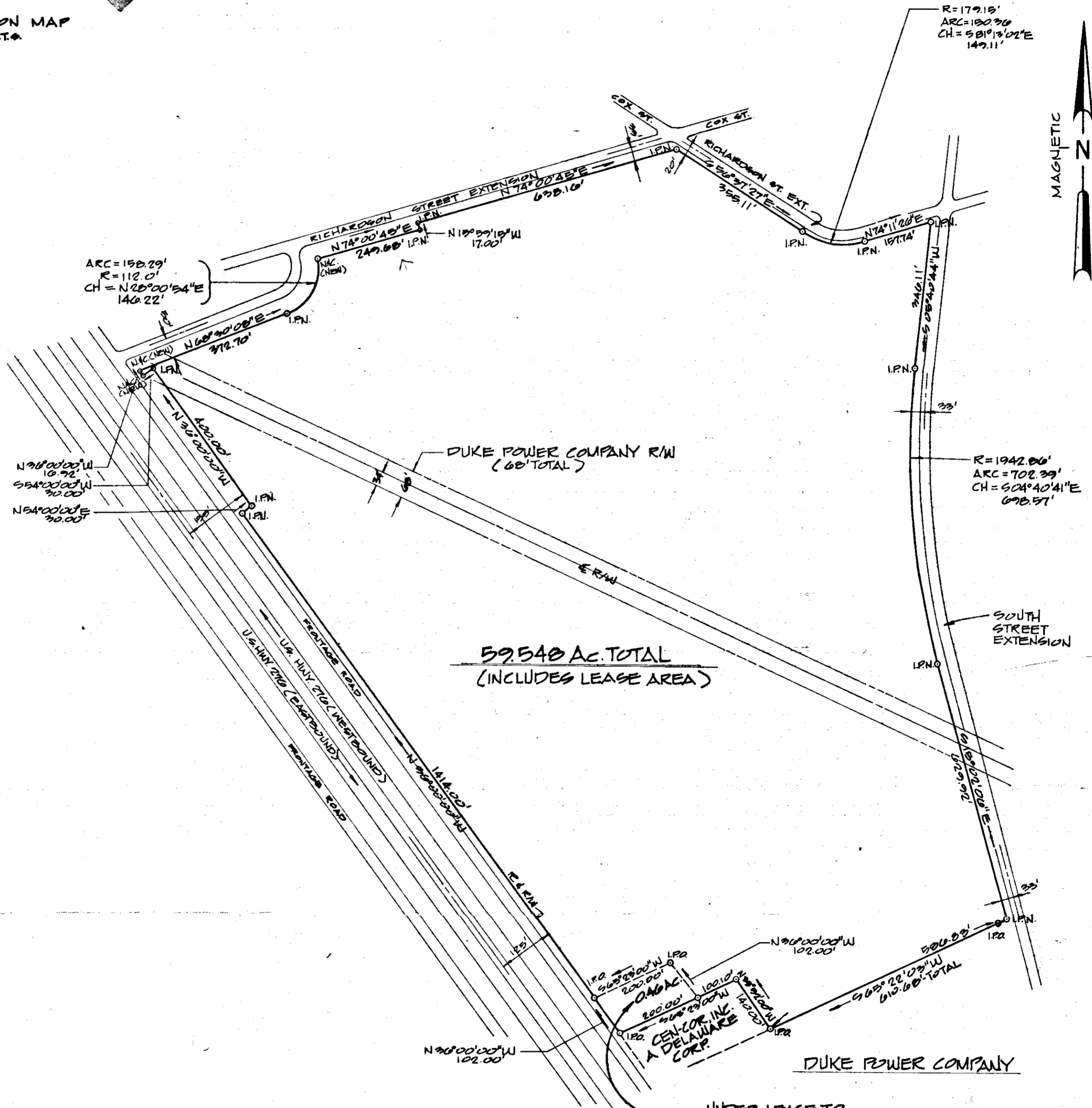


LOCATION MAP N.T.S.

FILED
GREENVILLE CO. S. C.
OCT 22 10 52 AM '80
DONNIE S. TANKERSLEY
R.M.C.

NOTES:

MICROFILMED



59.540 AC. TOTAL
(INCLUDES LEASE AREA)

DUKE POWER COMPANY

UNDER LEASE TO
CEN-COR, INC.

I HEREBY CERTIFY THAT THE RATIO OF PRECISION
OF THE FIELD SURVEY IS 1/10,000 AS SHOWN
HEREON AND THE AREA WAS DETERMINED BY
D.M.D. METHOD OF AREA CALCULATION.

Thelma Amido
SURVEYOR'S SIGNATURE

4032
S. C. REG. NO.

OCT 22 1980
12674

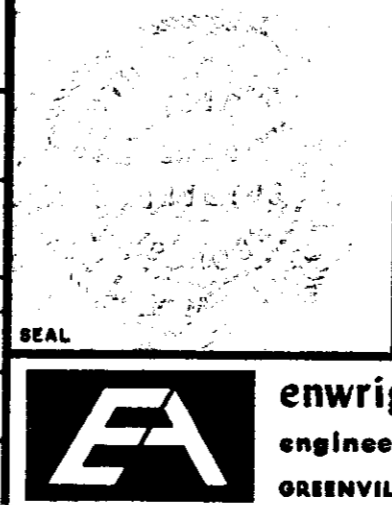
PRINTED
APR 14 1980

7-1-94

ENWRIGHT ASSOCIATES, INC.
REPRODUCTION DEPT.



REV.	DATE	BY	DESCRIPTION	APP.
0		WHP	ISSUED FOR REVIEW.	



A SURVEY MADE FOR:
TENFOLD PARTNERSHIP
CITY OF SIMPSONVILLE
GREENVILLE COUNTY, SOUTH CAROLINA

enwright associates, inc.
engineers planners surveyors
GREENVILLE, SOUTH CAROLINA

WHP	TMA	GW	FILE	RETIRED
DRAWN	DESIGN	CHECK		
DATE 7/80	SCALE 1"=200'	DWG. NO. 80510		

OCT 22 1980 1342 5:00 P.M.