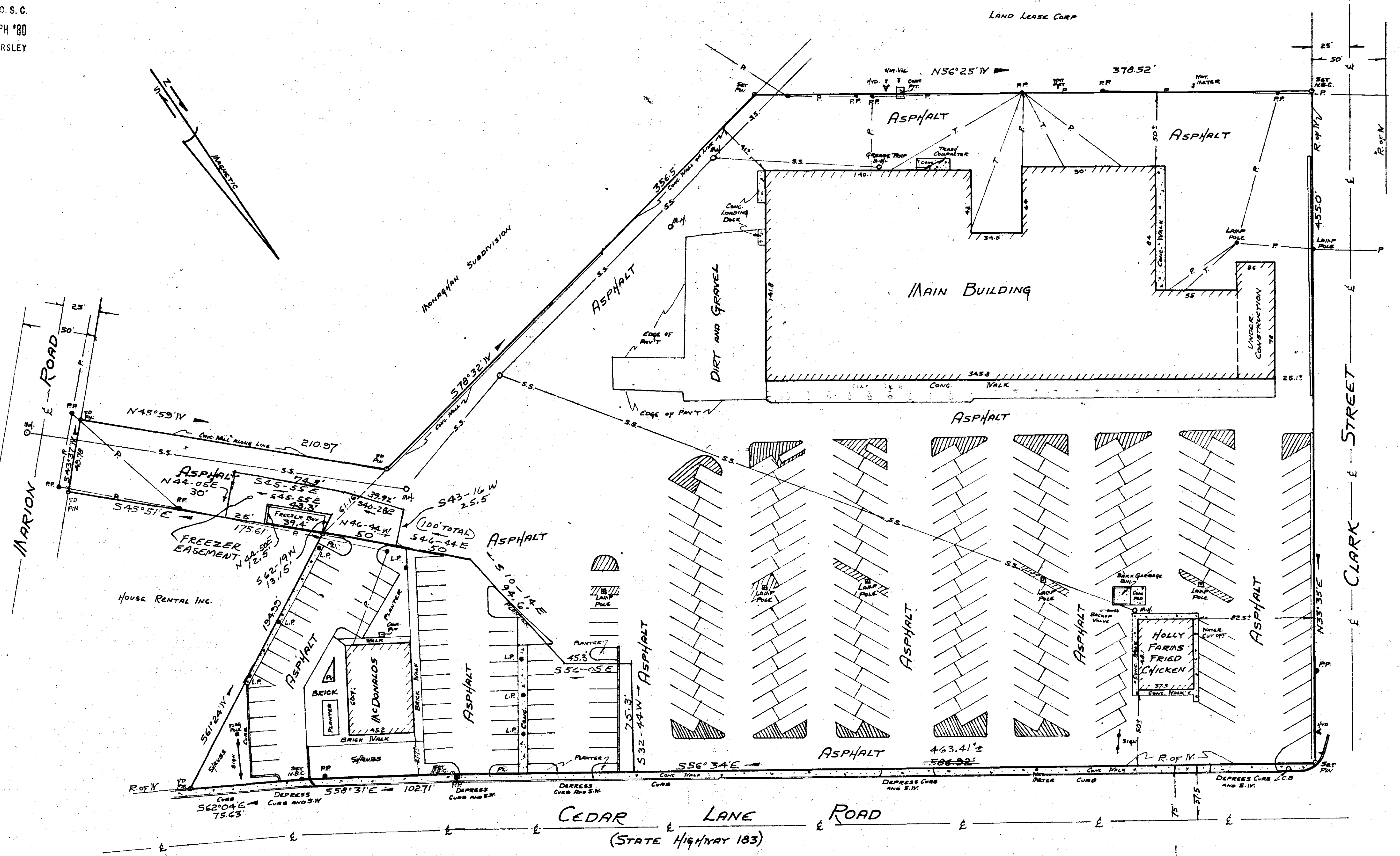
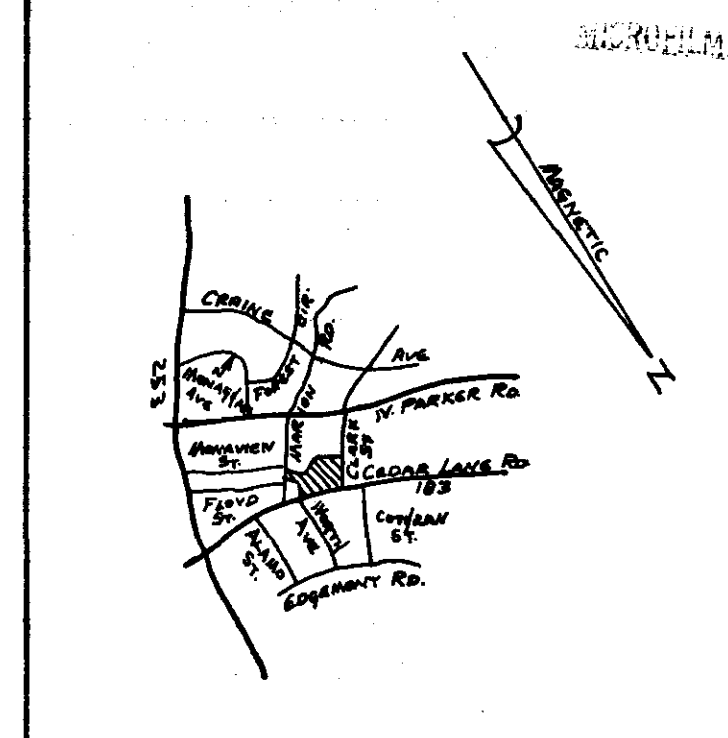


FILED
GREENVILLE CO. S.C.
AUG 5 2 03 PM '80
DONNIE WANKERSLEY
R.M.C.



THIS PLAT IS A SUBDIVISION
A PLAT FOR GREENVILLE
COUNTY SOUTH CAROLINA.
8/5/76
Chief Clerk, Secretary, or Director of
Planning
Greenville County Planning Commission

FINAL AS BUILT SURVEY FOR
LAND LEASE CORP.
NEAR GREENVILLE, SOUTH CAROLINA
SCALE 1"=40' Nov. 16, 1976

NOTE:
TRACT FOR MCDONALDS CORPORATION ADDED
JUNE 23, 1980 - NO FIELD SURVEY MADE -
DESCRIPTION TAKEN FROM TOPOGRAPHICAL
MAP FOR MCDONALDS CORP. DATED MAY 1979
BY DALTON & NEEVES CO. ENGR. BEARINGS
CONVERTED TO SAME MAGNETIC DATUM
AS LAND LEASE PLAT.

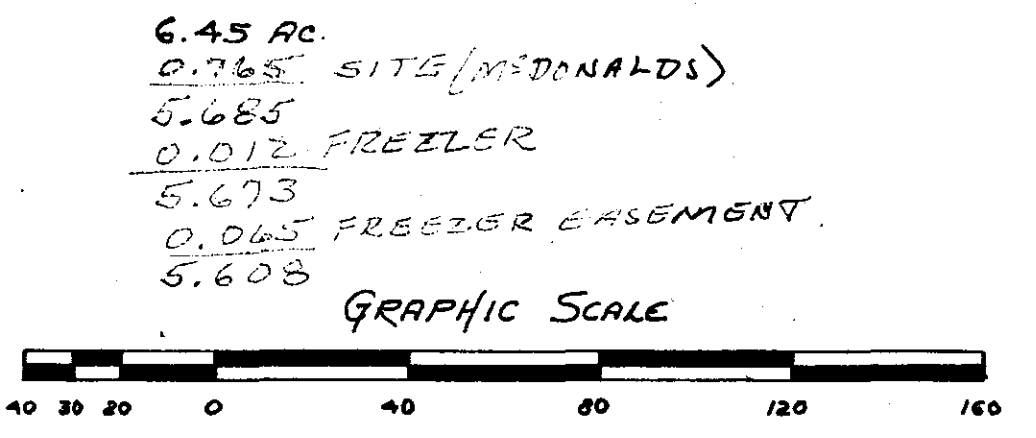
3432 BY: CLARKSON SURVEYING
S.C. Clarkson SCRLS 2589

7-4-60

CERTIFICATE
THIS IS TO CERTIFY THAT ON NOV 16, 1976, I SURVEYED THE PROPERTY ON THIS
PLAT, AND THE SAME IS CORRECT, BEING THE SAME PROPERTY AS DESCRIBED IN
DEED RECORDED IN DEED BOOK 261 ON PAGE 656, OFFICE OF R.M.C. FOR GREENVILLE
COUNTY, SOUTH CAROLINA.
THAT THE DIMENSIONS OF THE NEW STRUCTURE ARE AS SHOWN ON SAID PLAT, AND
THE IMPROVEMENTS ARE WITHIN THE LOT LINES AND THAT NO RESTRICTIVE BUILDING
LINES HAVE BEEN VIOLATED.
THAT THERE ARE NO EASEMENTS OR ENCROACHMENTS OR UTILITIES CROSSING, EXCEPT
AS SHOWN HEREON.

R. D. Wankersley
REG. LAND SURVEYOR
NS 4678

7-4-61



AUG 5 1980

BY CAMPBELL & CLARKSON
SURVEYORS, INC.

R. D. Wankersley
SCRLS NS 4678

50701
50702
50703
50704
50705
50706
50707
50708
50709
50710
50711
50712
50713
50714
50715
50716
50717
50718
50719
50720
50721
50722
50723
50724
50725
50726
50727
50728
50729
50730
50731
50732
50733
50734
50735
50736
50737
50738
50739
50740
50741
50742
50743
50744
50745
50746
50747
50748
50749
50750
50751
50752
50753
50754
50755
50756
50757
50758
50759
50760
50761
50762
50763
50764
50765
50766
50767
50768
50769
50770
50771
50772
50773
50774
50775
50776
50777
50778
50779
50780
50781
50782
50783
50784
50785
50786
50787
50788
50789
50790
50791
50792
50793
50794
50795
50796
50797
50798
50799
50800