

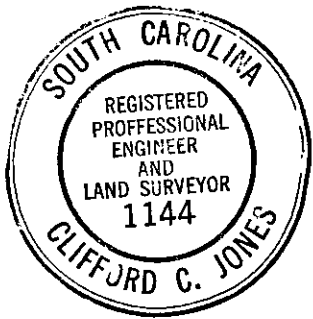
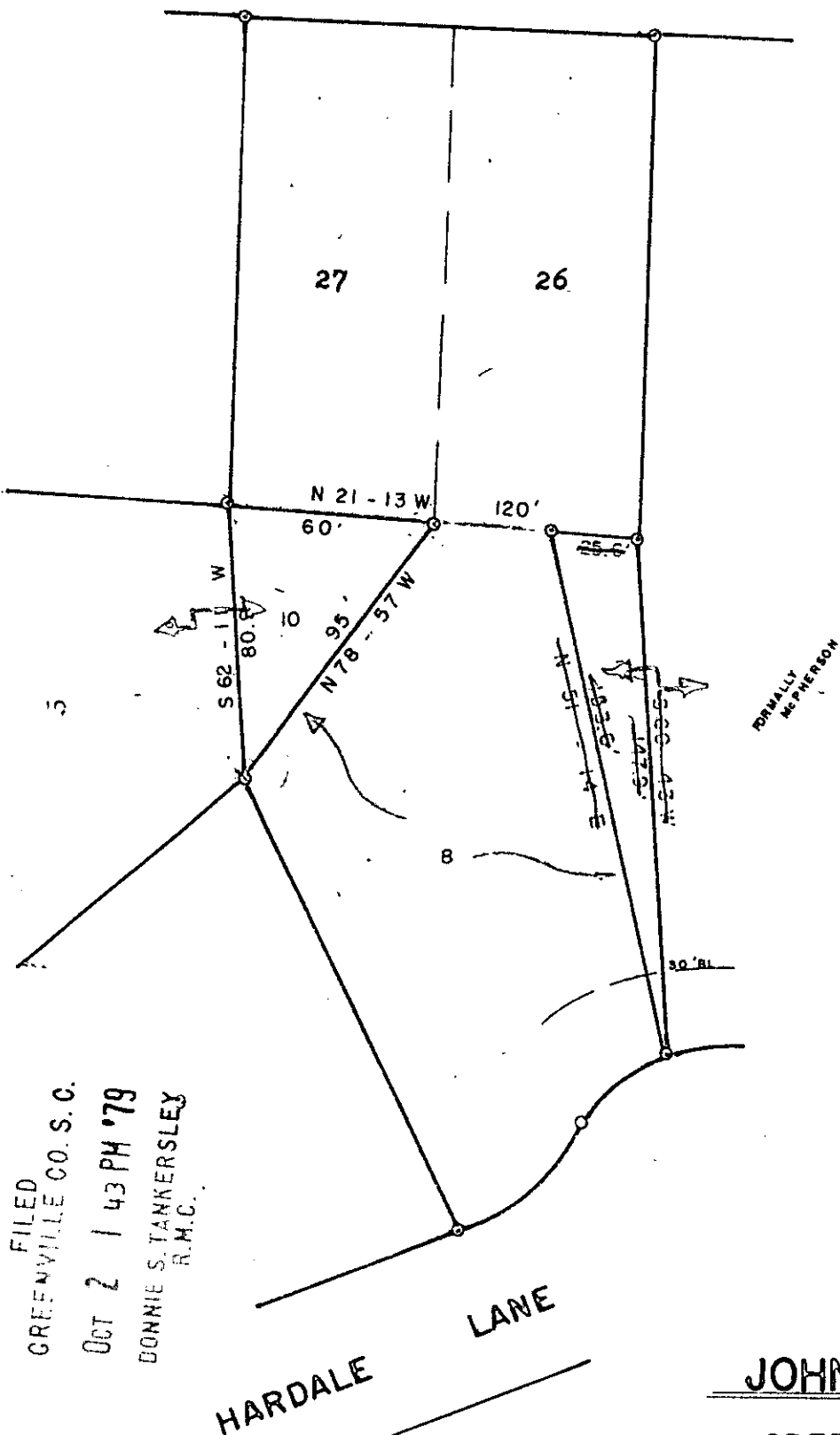


CLOVERDALE LA.

THIS PLAT IS NOT A SUBDIVISION AS DEFINED BY THE GREENVILLE COUNTY SUBDIVISION REGULATIONS.

10/2/1979

*Anthony B. Cuiello*  
 Chairman, Secretary, or Director of Planning.  
 Greenville County Planning Commission



FILED  
 GREENVILLE CO. S.C.  
 OCT 2 1 43 PM '79  
 BONNIE S. TANKERSLEY  
 R.M.C.

PROPERTY OF

JOHN W. JONES

GREENVILLE COUNTY, S.C.

SCALE 1" = 50' JULY 29, 1976

OCT 2 1979

7-R-10 11216