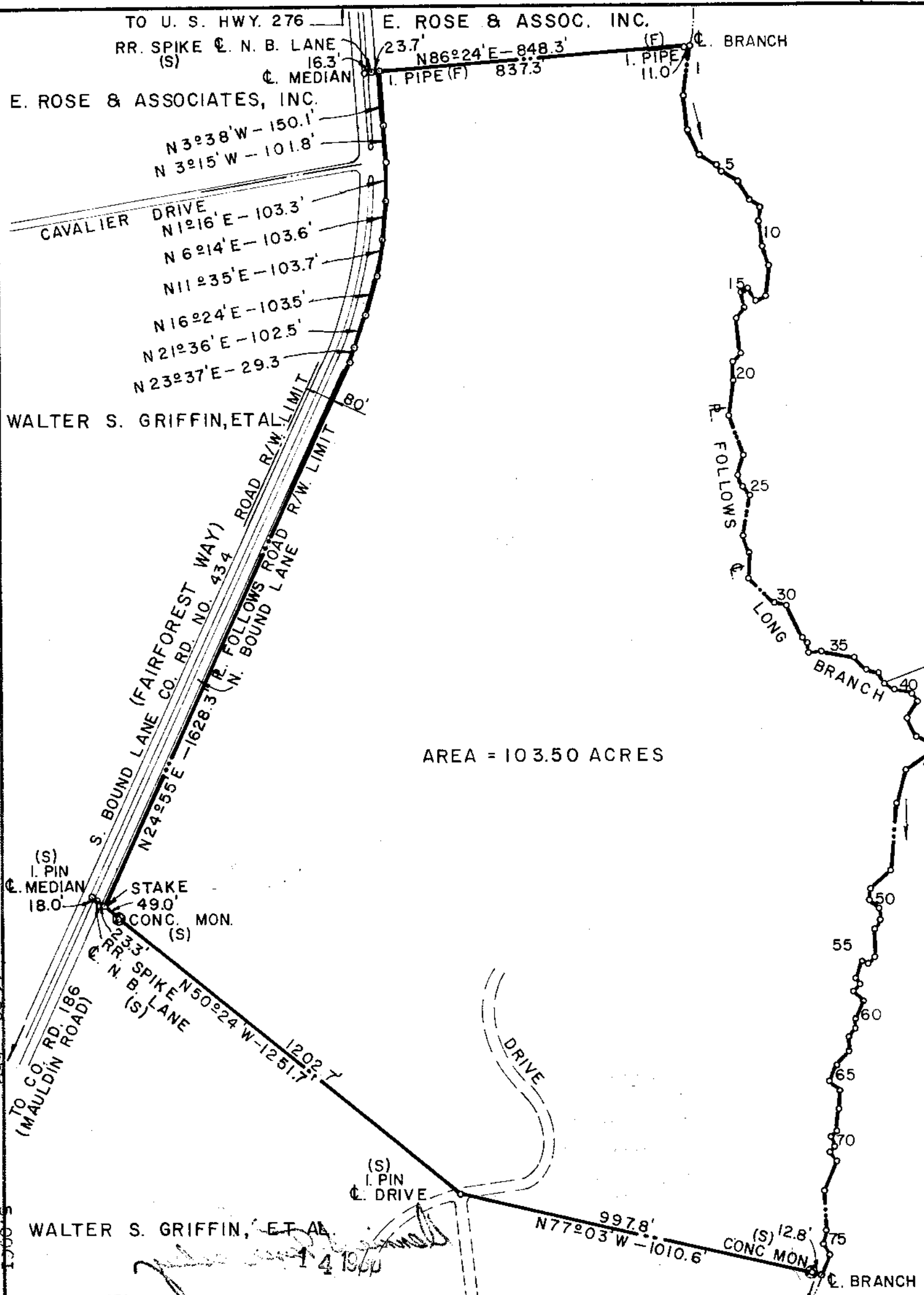


ENLARGED



BEARINGS AND DISTANCES WITH C. LONG BRANCH

1.	S	7°	42'	W	120.3'	39.	S	52°	07'	E	28.7'
2.	S	8°	34'	E	97.5'	40.	S	71°	18'	E	49.0'
3.	S	26°	33'	E	65.8'	41.	S	39°	32'	E	23.2'
4.	S	56°	25'	E	56.7'	42.	S	29°	23'	W	52.4'
5.	S	28°	51'	E	22.1'	43.	S	23°	25'	E	59.7'
6.	S	61°	19'	E	57.7'	44.	S	60°	42'	E	62.7'
7.	S	29°	52'	E	60.1'	45.	S	57°	03'	W	95.0'
8.	S	56°	16'	E	33.6'	46.	S	19°	04'	W	101.0'
9.	S	6°	16'	W	45.6'	47.	S	6°	04'	W	185.5'
10.	S	6°	06'	E	67.9'	48.	S	50°	04'	W	71.0'
11.	S	13°	15'	E	62.5'	49.	S	15°	55'	W	29.4'
12.	S	6°	51'	W	73.5'	50.	S	56°	54'	E	36.6'
13.	S	80°	31'	W	28.9'	51.	S	1°	54'	E	29.0'
14.	N	56°	07'	W	36.1'	52.	S	23°	58'	W	36.7'
15.	S	65°	55'	W	8.9'	53.	S	4°	03'	W	77.0'
16.	S	3°	00'	E	46.6'	54.	S	43°	31'	W	17.1'
17.	S	44°	12'	W	22.5'	55.	S	89°	20'	W	17.5'
18.	S	1°	24'	E	109.0'	56.	S	25°	30'	W	50.3'
19.	S	53°	19'	W	22.0'	57.	S	47°	19'	E	15.8'
20.	S	1°	21'	E	60.5'	58.	S	23°	38'	W	26.0'
21.	S	13°	37'	W	90.2'	59.	S	34°	24'	E	31.1'
22.	S	21°	10'	E	115.1'	60.	S	17°	16'	W	49.7'
23.	S	12°	06'	W	58.3'	61.	S	5°	04'	W	39.1'
24.	S	15°	59'	E	29.2'	62.	S	35°	04'	W	23.0'
25.	S	42°	04'	E	21.2'	63.	S	0°	29'	E	36.1'
26.	S	6°	02'	W	116.4'	64.	S	46°	07'	W	49.2'
27.	S	19°	08'	E	52.5'	65.	S	12°	00'	W	47.7'
28.	S	3°	07'	W	63.5'	66.	S	35°	21'	E	34.5'
29.	S	44°	04'	E	97.4'	67.	S	3°	18'	E	57.9'
30.	S	72°	15'	E	30.5'	68.	S	10°	32'	W	55.4'
31.	S	25°	56'	E	102.4'	69.	S	49°	07'	W	17.5'
32.	S	40°	39'	E	35.0'	70.	S	14°	35'	E	33.3'
33.	S	10°	42'	W	12.8'	71.	S	39°	57'	W	16.2'
34.	N	89°	31'	E	28.2'	72.	S	40°	25'	E	21.1'
35.	S	78°	05'	E	89.0'	73.	S	21°	46'	W	95.2'
36.	S	50°	42'	E	44.8'	74.	S	2°	33'	E	108.2'
37.	S	70°	49'	E	32.7'	75.	S	9°	24'	W	35.4'
38.	S	41°	13'	E	36.8'	76.	S	23°	23'	E	35.4'
						77.	S	25°	51'	W	53.7'

"I Hereby" Certify that the Ratio Of Precision of the field survey is 1:6,860 as shown and the Area was determined by D.M.D. method of Area Calculation.

Donnie S. Tankersley
S.C., R.L.S. No. 5387
Duke Power Co.
Charlotte, NC



7-Q-96 ✓

21916

NOTE:
FOR TOPOGRAPHIC MAP
SEE DWG. NO. 408-100

DUKE POWER COMPANY
SOUTHERN SUPPORT FACILITY
"WENWOOD SITE"
PROPERTY ACQUIRED FROM
WALTER S. GRIFFIN, ET AL.

GREENVILLE, S. C.
GREENVILLE COUNTY
SCALE: 1"=300'
MISC. BOOK NO. 495
OCTOBER 4, 1979
FILE NO. 161-18

FILED
GREENVILLE CO. S. C.
JAN 14 11 52 AM '80
DONNIE S. TANKERSLEY
R.M.C.