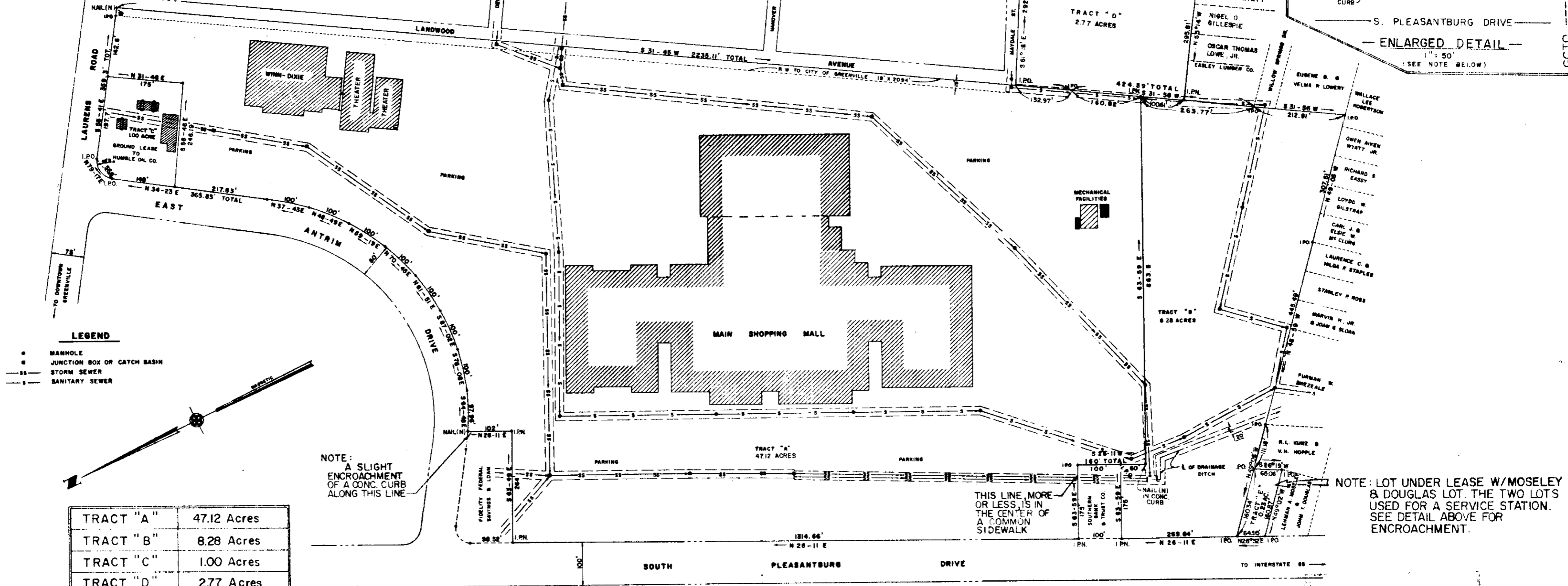
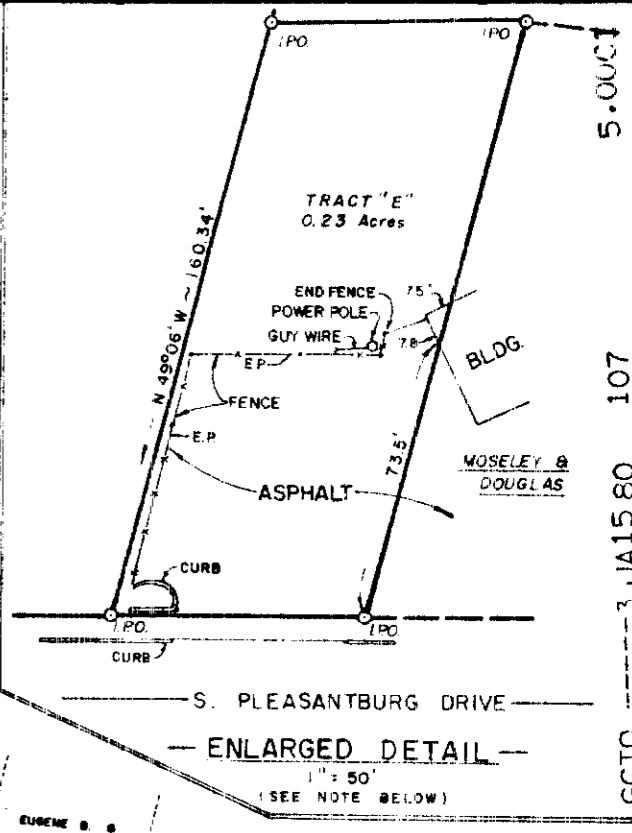
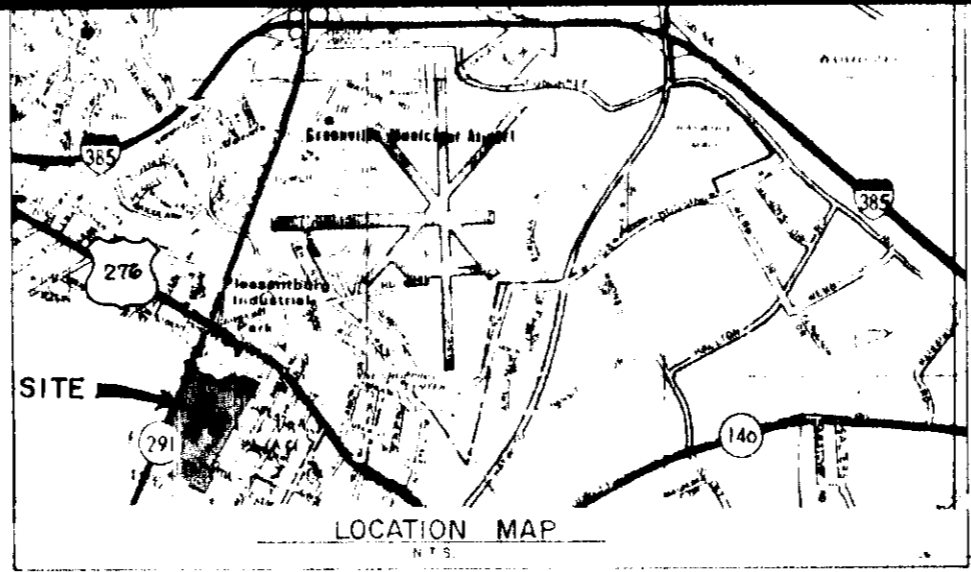
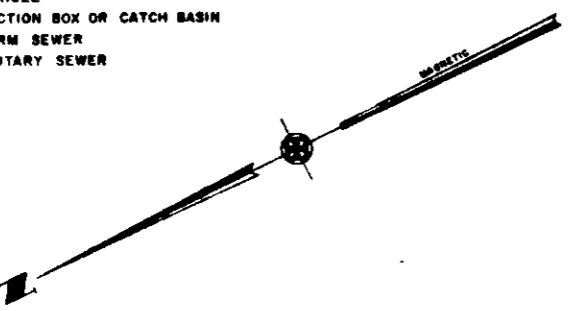


FILED
GREENVILLE CO. S. C.
JAN 15 9 29 AM '80
DONNIE S. TANKERSLEY
R.M.C.



- LEGEND**
- MANHOLE
 - JUNCTION BOX OR CATCH BASIN
 - STORM SEWER
 - - - SANITARY SEWER



TRACT "A"	47.12 Acres
TRACT "B"	8.28 Acres
TRACT "C"	1.00 Acres
TRACT "D"	2.77 Acres
TRACT "E"	0.23 Acres
TOTAL	59.40 Acres

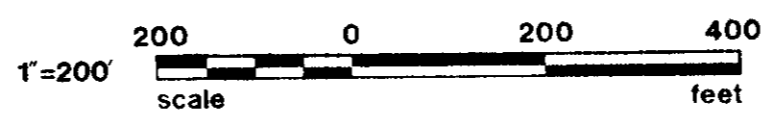
NOTE: A SLIGHT ENCROACHMENT OF A CONC. CURB ALONG THIS LINE

THIS LINE, MORE OR LESS, IS IN THE CENTER OF A COMMON SIDEWALK

NOTE: LOT UNDER LEASE W/MOSELEY & DOUGLAS LOT. THE TWO LOTS USED FOR A SERVICE STATION. SEE DETAIL ABOVE FOR ENCROACHMENT.

NOTE: CITY OF GREENVILLE ZONING REQUIRES (6) PARKING SPACES PER 1,000 SQ. FT. OF GROUND FLOOR AREA IN SHOPPING CENTERS. THERE IS APPROXIMATELY 378,743 SQ. FT. OF GROUND FLOOR AREA LOCATED ON THE PREMISES. AT (6) SPACES PER 1,000 SQ. FT., THERE ARE 2,272 PARKING SPACES REQUIRED. THERE ARE 3,320 PARKING SPACES LOCATED ON THE PREMISES. THIS EXCEEDS CITY ZONING REQUIREMENTS BY 1,048 PARKING SPACES. 3,320 PARKING SPACES YIELDS 8.77 PARKING SPACES PER 1,000 SQ. FT. OF GROUND FLOOR AREA.

THIS PLAT IS NOT A SUBDIVISION AS DEFINED BY THE CITY OF GREENVILLE COUNTY'S JUDICIAL REGULATIONS.
12/31/79 F. J. Forber
City Engineer or Director of Planning
Greenville County Planning Commission



22066 JAN 15 1980
7-0-73
ENGINEERING SURVEYING, INC.

I HEREBY CERTIFY THAT THE MEASUREMENTS AS SHOWN ABOVE ARE CORRECT AND THERE ARE NO ENCROACHMENTS OR PROJECTIONS OTHER THAN SHOWN
Surveyor's Signature: *Donnie S. Tankersley*
4032 S.C. REG NO.

REV.	DATE	BY	DESCRIPTION	APP.
1	12/17/79	WHP	ADDED DISTANCE (1006') TO COMMON LINE TRACT "B" & TRACT "D"	
2	2/11/79	WHP	ISSUED FOR REVIEW	
REVISION				

A SURVEY MADE FOR:

MCALISTER SQUARE COMPANY

LOCATED IN THE CITY OF GREENVILLE
GREENVILLE COUNTY, SOUTH CAROLINA

enwright associates, inc. engineers planners surveyors GREENVILLE, SOUTH CAROLINA	W DRAWN	H DESIGN	P CHECK	T M A	G W O	FILE	RETIRE
	2/10/79	DATE	1"=200'	SCALE	DWG. NO.	79576	

ENGINEERING REPROGRAPHICS 84272 P04-2 8-74