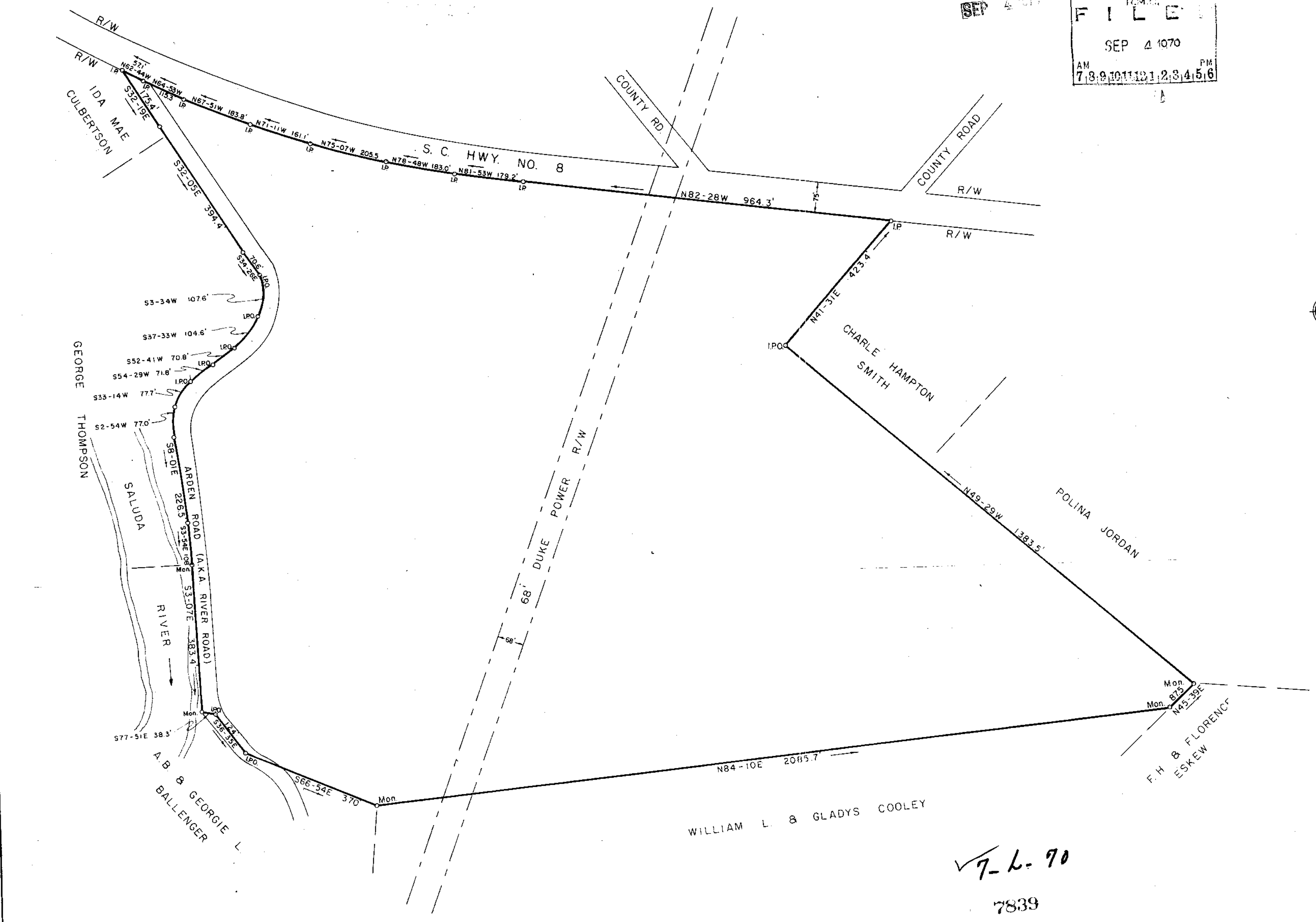
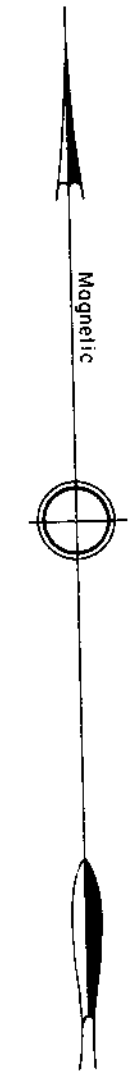


SEP 4 1970

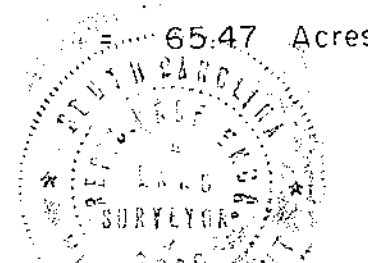
DONNIE S. TAMPER
R.M.C.
FILED
SEP 4 1970
AM 7 8 9 10 11 12 1 2 3 4 5 6 PM



✓ 7-6-90
7839

MICROFILMED

TOTAL AREA = 69.82 Acres
AREA POWER R/W = 2.60 Acres
AREA RIVER RD = 1.75 Acres
NET AREA = 65.47 Acres



F.B. 446
S.C. Reg. No. 6266

William B. Cant

The KENDALL Company		CHARLOTTE NORTH CAROLINA	
PELZER PLANT			
SCALE	8-6-79	8-7-79	8-8-79
1" = 200'	S.E.B.	R.W.D.	R.W.D.
	DRAWN	CHECKED	APPROVED
POWER LINE PROPERTY EAST OF SALUDA RIVER IN GREENVILLE COUNTY		POCKET	FOLDER
DALTON & NEVES ENGINEERS Greenville, South Carolina		DO NOT SCALE DRAWING	
		PVCP-198 C	

GCTO -----2 SE 4 79 1162

5.00CI