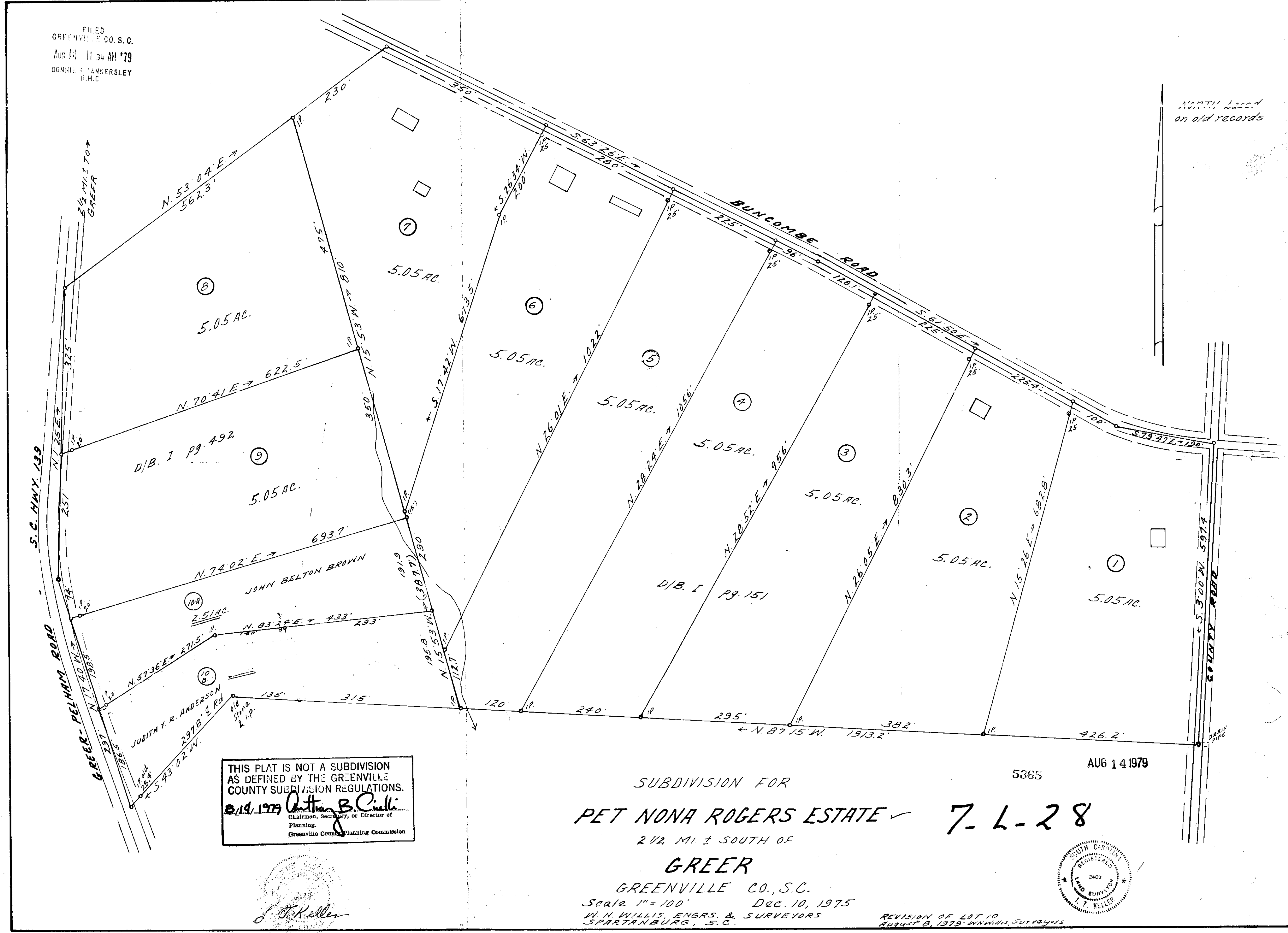


FILED
 GREENVILLE CO. S.C.
 AUG 14 11 34 AM '79
 DONNIE S. TANKERSLEY
 R.M.C.

NORTH LINE
 on old records



THIS PLAT IS NOT A SUBDIVISION
 AS DEFINED BY THE GREENVILLE
 COUNTY SUBDIVISION REGULATIONS.
 8/14/1979 *Arthur B. Ciulli*
 Chairman, Secretary, or Director of
 Planning,
 Greenville County Planning Commission

5365 AUG 14 1979

SUBDIVISION FOR
PET NONA ROGERS ESTATE ✓ **7-L-28**
 2 1/2 MI. ± SOUTH OF
GREER
 GREENVILLE CO., S.C.
 Scale 1" = 100' Dec. 10, 1975
 W. N. WILLIS, ENGRS. & SURVEYORS
 SPARTANBURG, S.C.

REVISION OF LOT 10
 AUGUST 8, 1979 - W. N. WILLIS, SURVEYORS



J. T. Keller

GCTD -- 1 AUG 13 79 1478
 5.0001