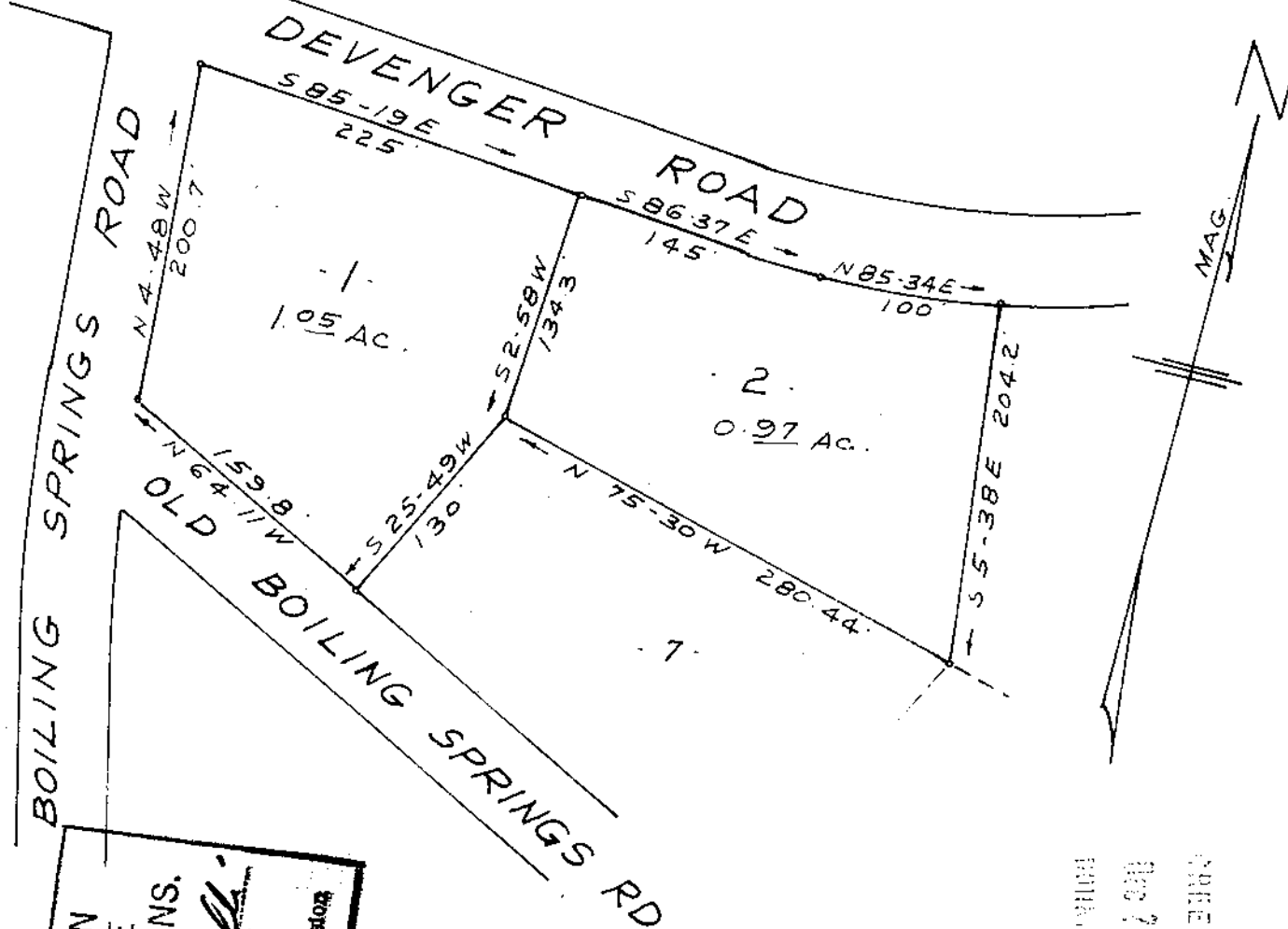


MICROFILMED

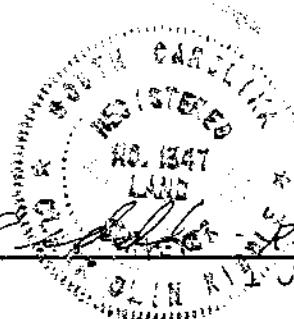


FILED  
 GREENVILLE CO. S.C.  
 Dec 21 4 23 PM '76  
 BOHLEN & TARRANTLEY  
 ARCHT.

THIS PLAT IS NOT A SUBDIVISION  
 AS DEFINED BY THE GREENVILLE  
 COUNTY SUBDIVISION REGULATIONS.  
 12/21/1978 *Anthony B. Cuilla*  
 Chairman, Secretary, or Director of  
 Planning.  
 Greenville County Planning Commission

LOTS 1 & 2  
 SECTION III - QUAIL RIDGE  
 NEAR GREENVILLE S.C.

SCALE 1" = 100' MAR. 1976



18896  
 6Y-30

C.O. R... Reg. L.S. 1347