



GEORGIA INDUSTRIAL REALTY

FRANK J. AYERS (NOW OR FORMERLY)

LAND FUND LTD.

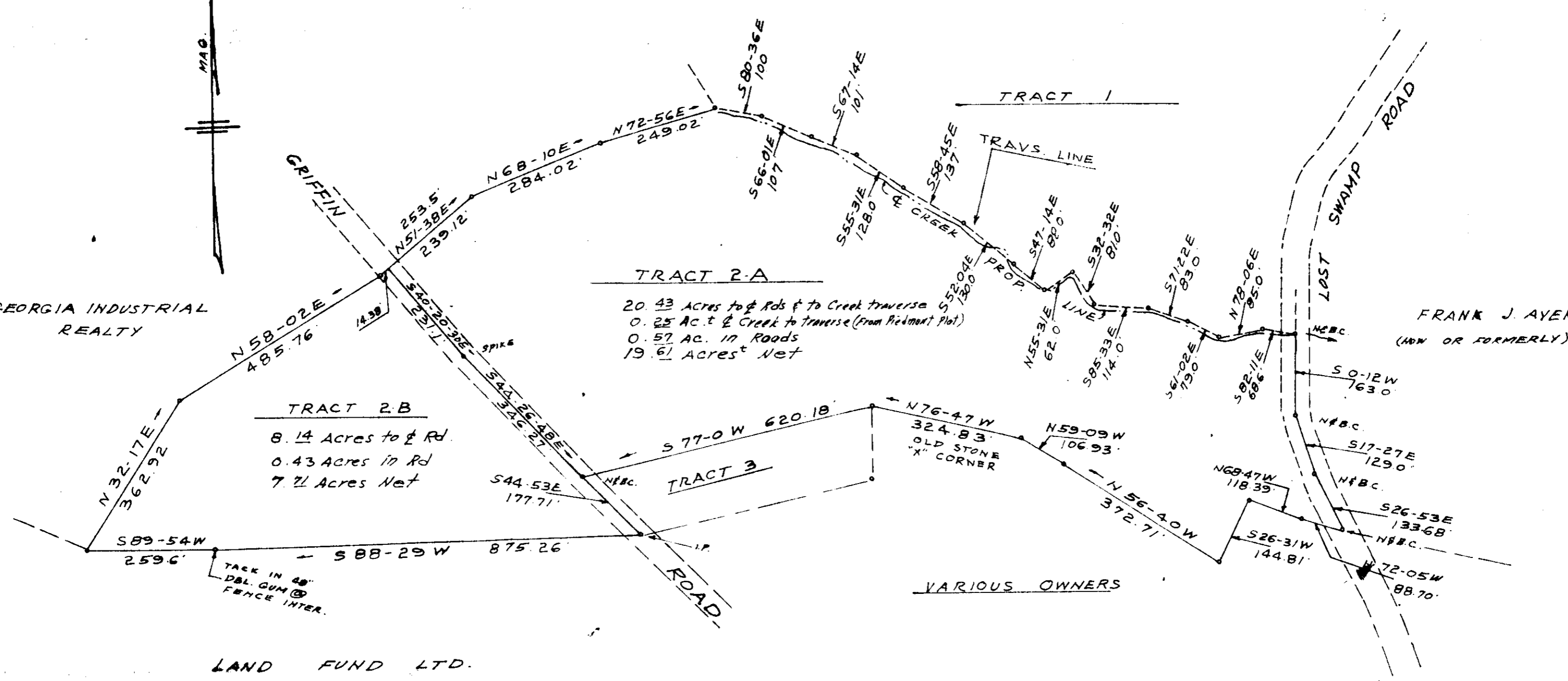
PROPERTY OF LAND FUND LTD. GREENVILLE CO. S.C.

FILED GREENVILLE CO. S.C. MAY 15 4 07 PM '78 DONNIE S. TANKERSLEY R.M.C.

SCALE 1" = 200' APR. 28, 1978

33990 ✓ 6-P-35 MICROFILMED MAY 15 1978

NOTE: DIVIDING ROAD LINE BETWEEN TRACT 2-A AND TRACT 2-B SURVEYED BY ME APRIL 28, 1978. REMAINDER COPIED FROM PLAT OF J.T. BULL... BY PIEDMONT ENG. ARCHITECTS AND PLANNERS... & REVISED JUNE 27, 1973.



TRACT 2-A
20.43 Acres to & Rds & to Creek traverse
0.25 Ac. to & Creek to traverse (from Piedmont Plat)
0.57 Ac. in Roads
19.61 Acres Net

TRACT 2-B
8.14 Acres to & Rd.
0.43 Acres in Rd
7.71 Acres Net

TRACT 3

VARIOUS OWNERS