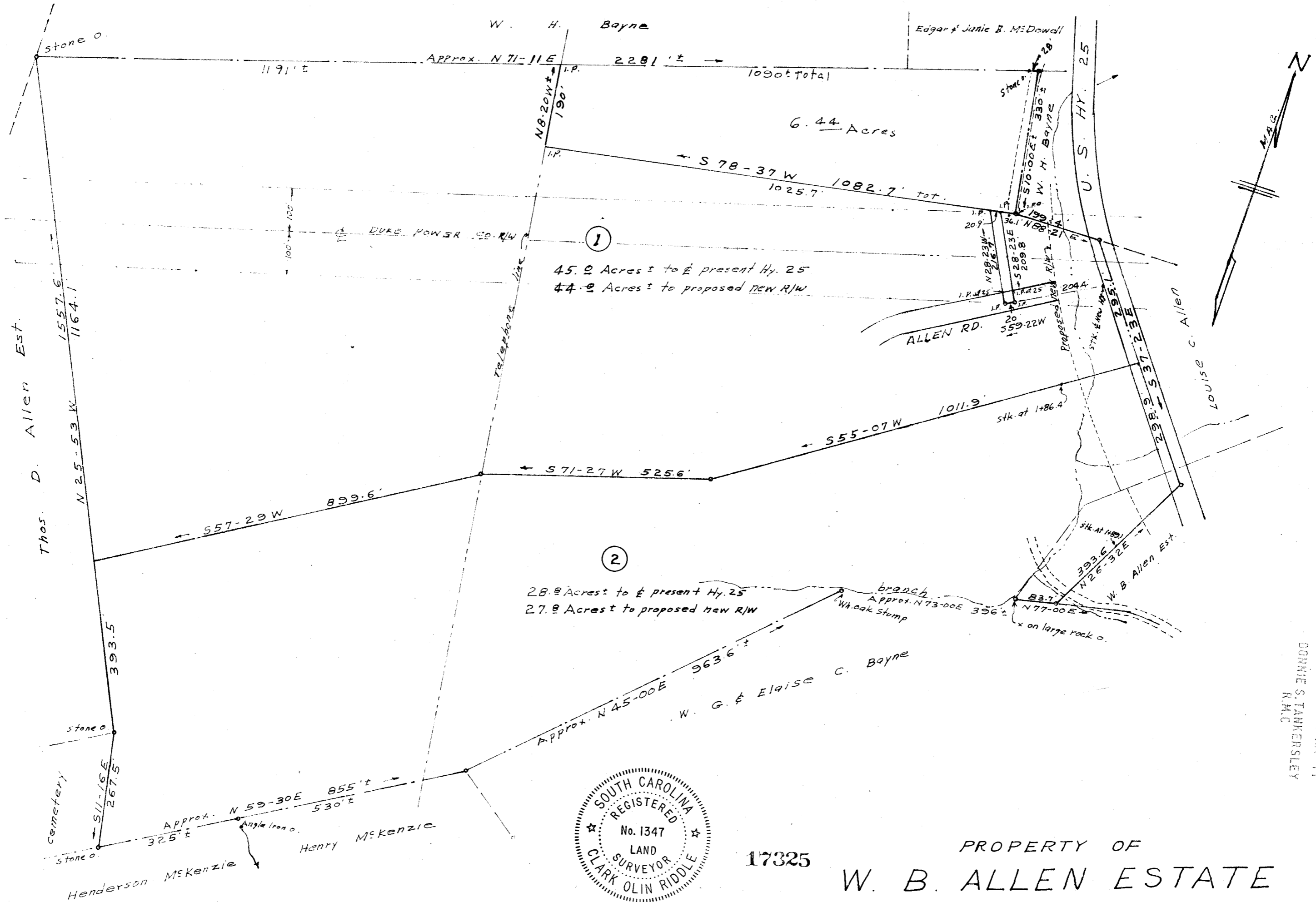


MICROFILMED

CG10 10E 677 1325

2.00CI



17325

PROPERTY OF
W. B. ALLEN ESTATE
 GREENVILLE COUNTY S.C.

SCALE 1"=200' JAN. 1964

DEC 5 '77

C.O. Riddle - Reg. L.S. #1347

FILED
 GREENVILLE CO. S.C.
 DEC 6 9 13 AM '77
 DONNIE S. TANKERSLEY
 R.M.C.

NOTE: (1) Solid lines surveyed this date by C.O. Riddle (JAN 1964)
 Remainder platted from various old plats and deeds.
 (2) 6.44 acre tract cut out of Lot No 1 and plat revised 4/22/66
 (3) PLAT revised 10/18/77 TO SHOW 20' STRIP FROM ALLEN RD TO 6.44 AC. TR. & POWER LINE.

✓6-J-35