

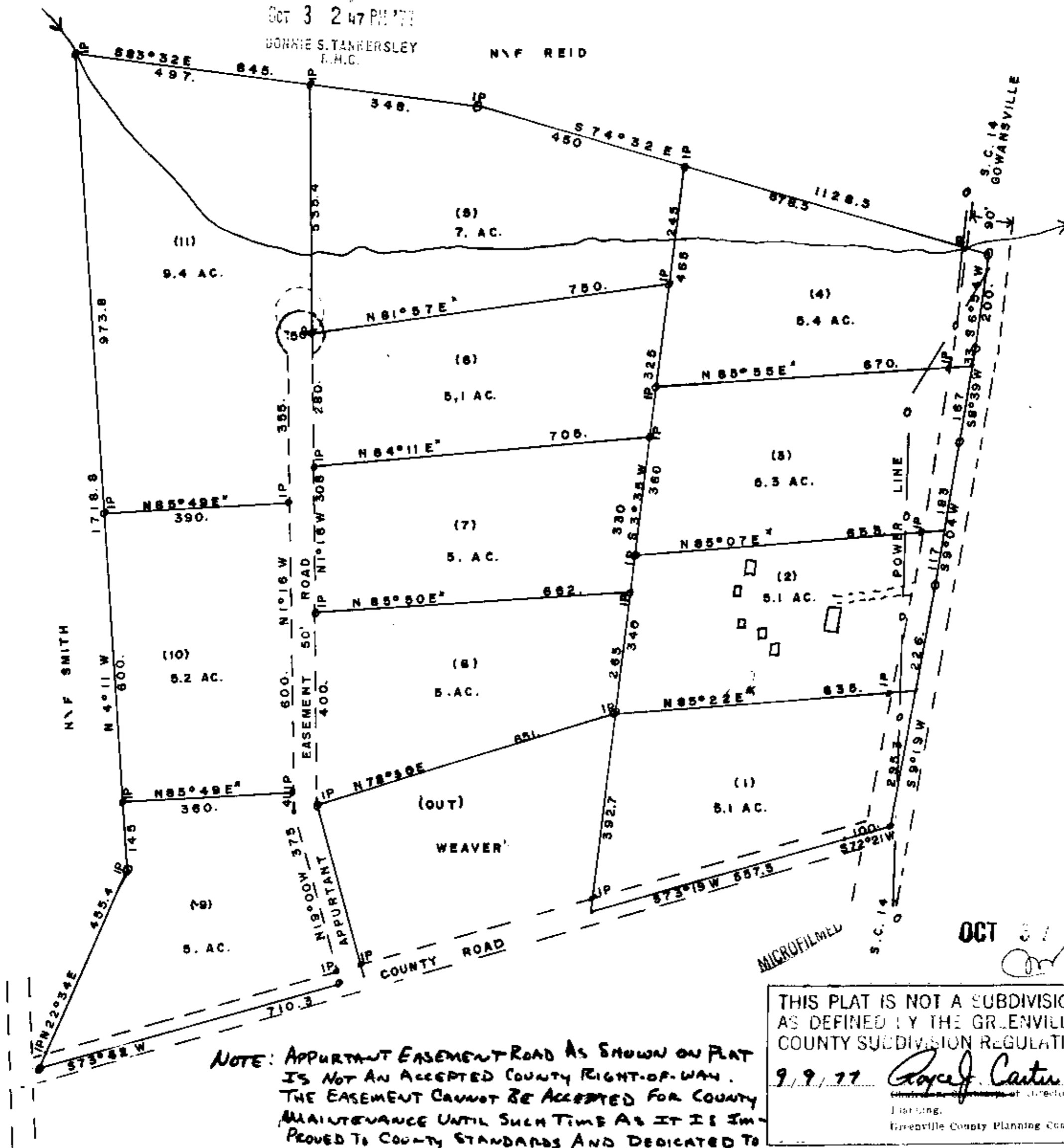
FILED  
GREENVILLE CO. S. C.

OCT 3 2 47 PM '77

BONNIE S. TANNERSLEY  
P.M.C.

N & F REID

MAG.



**NOTE: APPURTANT EASEMENT ROAD AS SHOWN ON PLAT IS NOT AN ACCEPTED COUNTY RIGHT-OF-WAY. THE EASEMENT CANNOT BE ACCEPTED FOR COUNTY MAINTENANCE UNTIL SUCH TIME AS IT IS IMPROVED TO COUNTY STANDARDS AND DEDICATED TO GREENVILLE COUNTY.**

MICROFILMED

OCT 3 1977

THIS PLAT IS NOT A SUBDIVISION AS DEFINED BY THE GREENVILLE COUNTY SUBDIVISION REGULATIONS.

9/9/77 *Royce J. Carter*  
Director of Planning  
Greenville County Planning Commission

PLAT PREPARED FOR GO-FORTH AUCTION & REALTY CO.  
PROPERTY OF F. L. CAMPBELL ESTATE  
LOCATED IN COUNTY OF GREENVILLE, STATE OF SOUTH CAROLINA  
NEAR GOWANSVILLE, S. C., SURVEYED AUG. 24, 1977  
SCALE 1" = 200', CONTAINING 64. ACRES, W. BLAIR MARTIN  
\*NOTE LINES COMPUTED  
1\ 16970 - DMD CLOSURE

PAUL RAMSING RLS 2508  
*Paul Ramsing* 10570



6E-90

Register Maps Commission Greenville County, S. C.  
Filed this day of Oct 1977  
M.A.S.