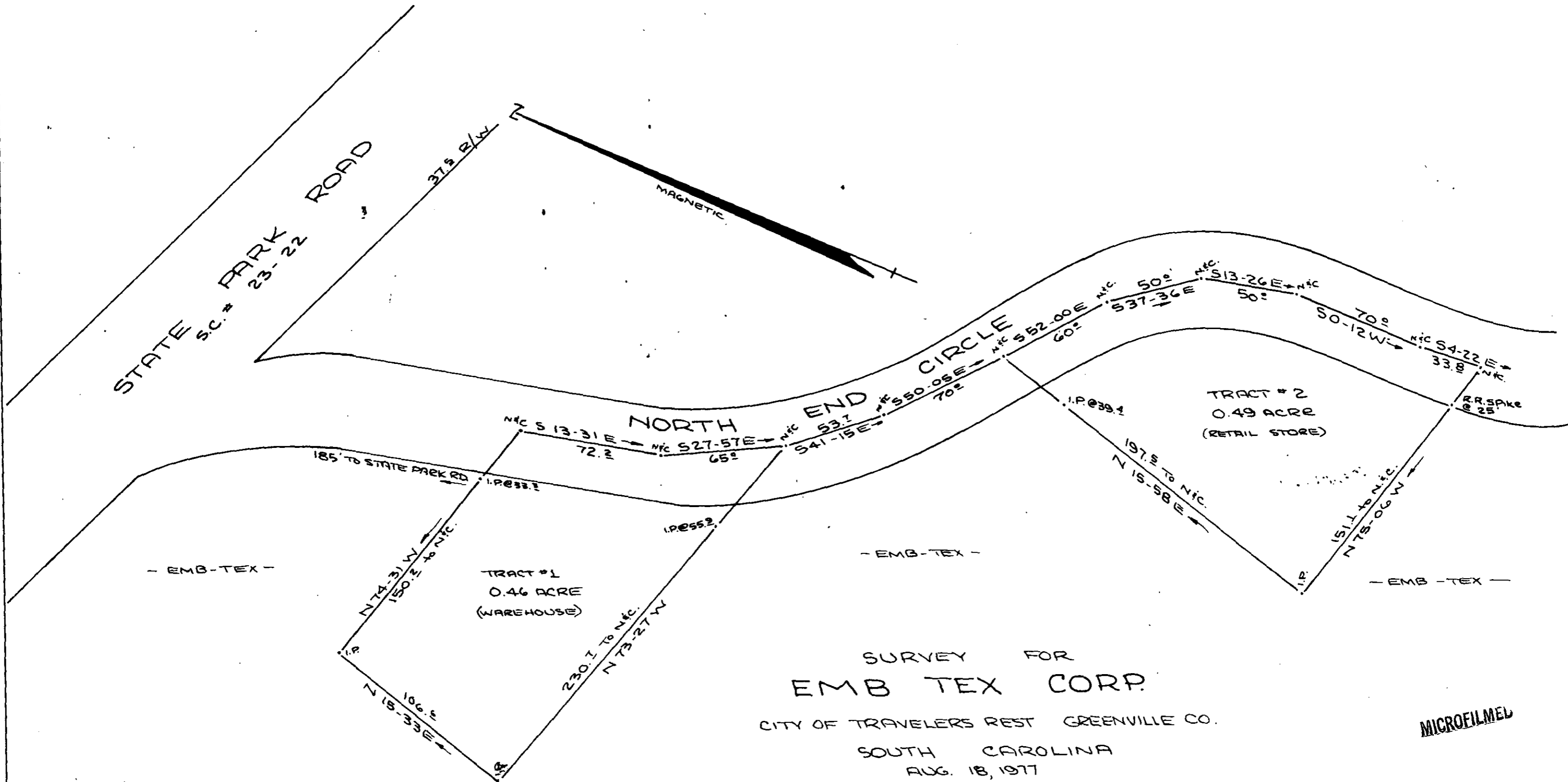


STATE PARK ROAD
S.C. # 23-22

37.5 R/W

MAGNETIC



SURVEY FOR EMB TEX CORP.

CITY OF TRAVELERS REST GREENVILLE CO.
SOUTH CAROLINA
AUG. 18, 1977

MICROFILMED

FILED
GREENVILLE CO. S.C. CLERK
OCT 3 2 47 PM '77
DONNIE S. JANKERSLEY
R.M.C.



PE: ILS # 3979
9 5 5 R 30 E

2.00 A1

FB. 24

485-1 - PT. 12

10571

✓ 6-E-89

OCT 3 '77

SCALE