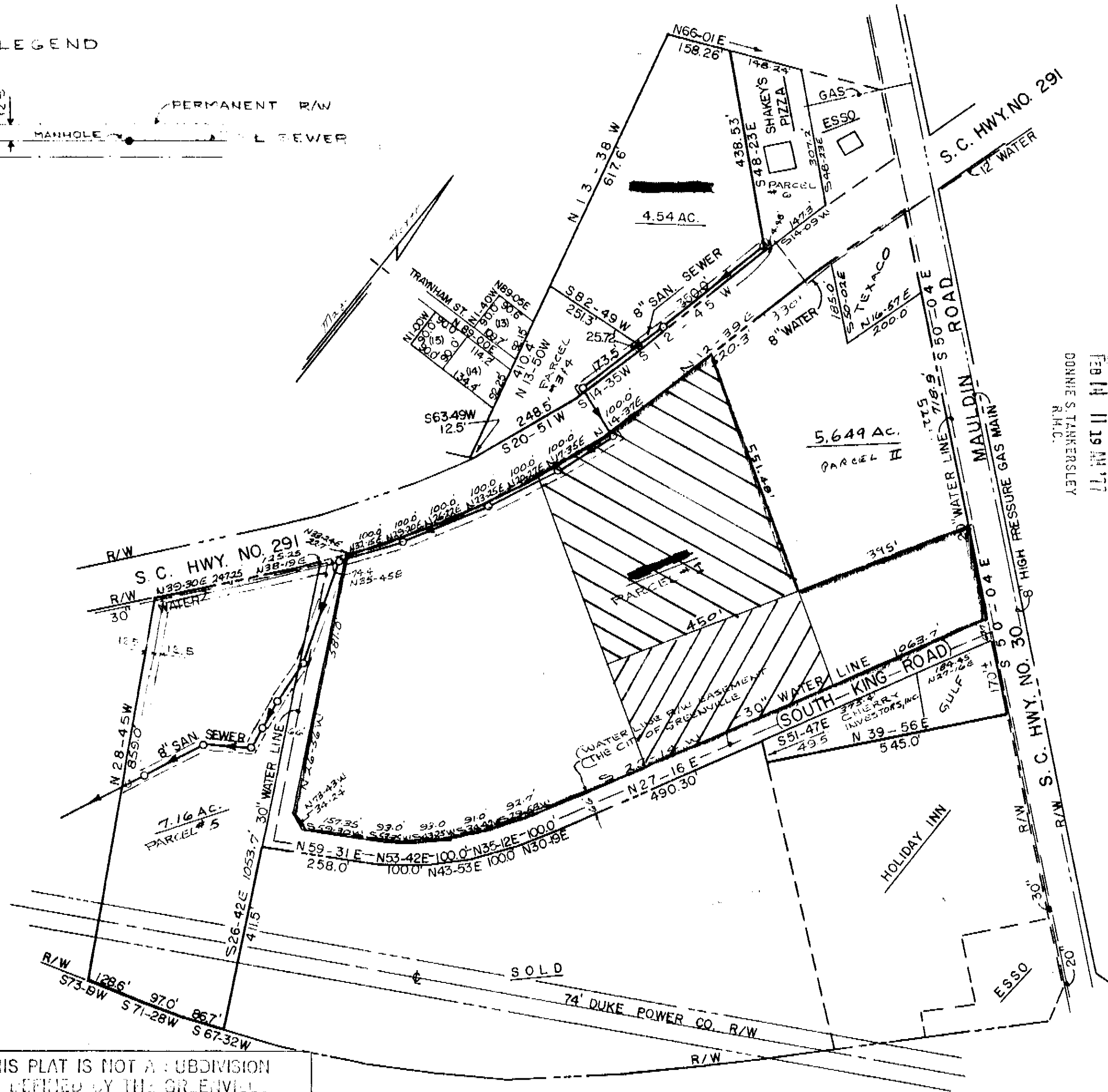
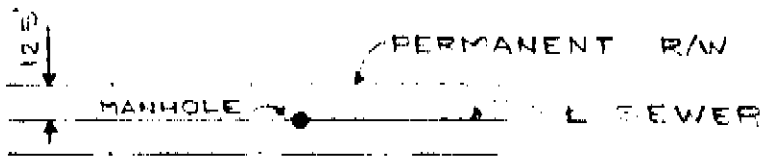


LEGEND



FILED
GREENVILLE CO. S.C.
FEB 14 11 19 AM '77
DONNIE S. TANKRENSLEY
R.M.C.

THIS PLAT IS NOT A SUBDIVISION
AS DEFINED BY THE GREENVILLE
COUNTY SUBDIVISION REGULATIONS.
2/14/77 *Ray J. Carter*
Director of
Planning,
Greenville County Planning Commission

*For Record purposes only - no
new lots created etc*
COMPILED FROM EXISTING
PLATS & DEEDS.

INTERSTATE HWY. NO. 85

MICROFILMED

2111
15-y-46

PROPERTY OF
KINGROADS DEVELOPMENT CORP.
NEAR GREENVILLE, S.C.

SCALE 1"=200' JAN. 28, 1967
200 AB

PIEDMONT ENGINEERS & ARCHITECTS
GREENVILLE, S.C.

REV. APRIL 19, 1968
REV. OCT. 18, 1968
REV. 1-28-74

5965