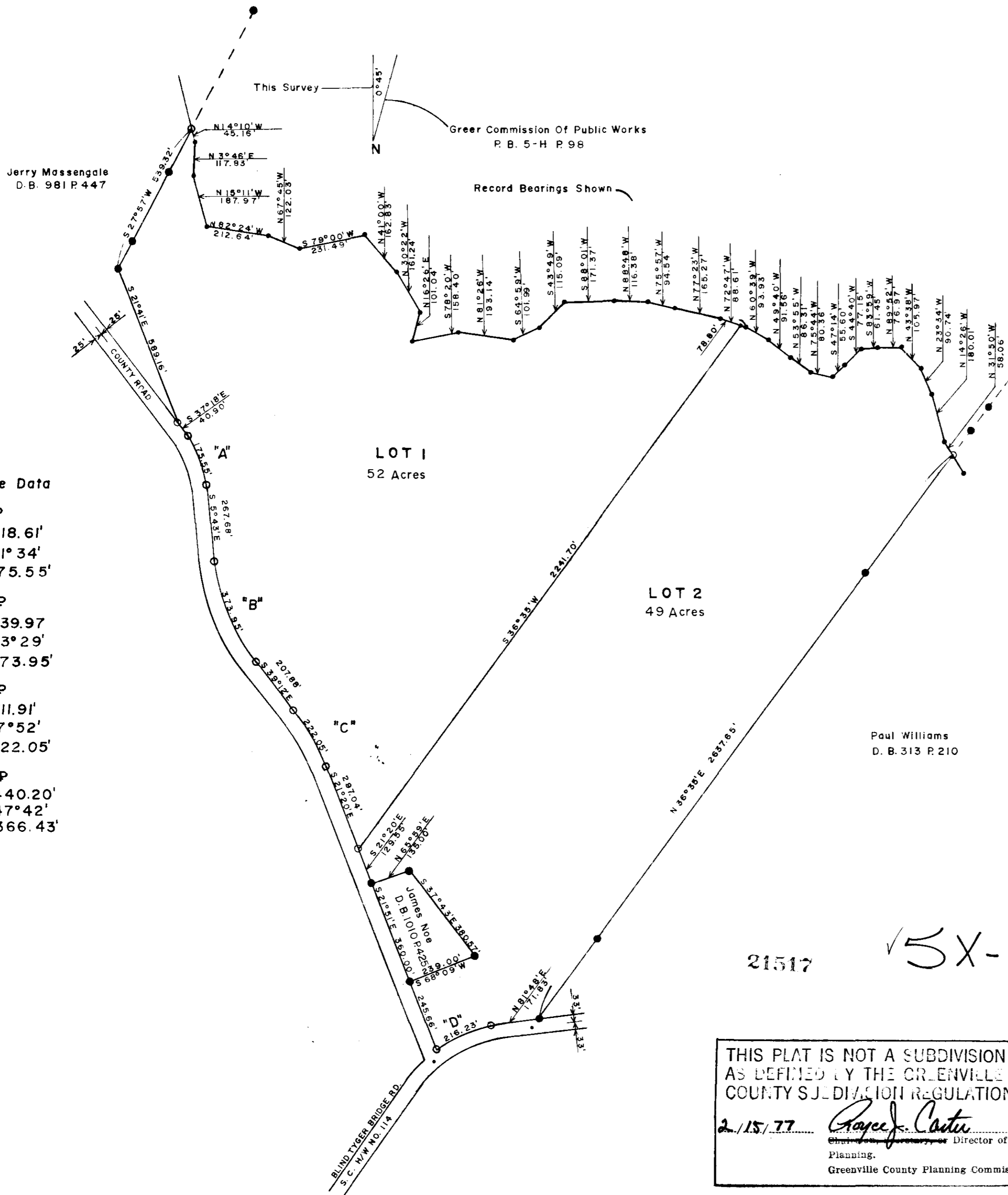
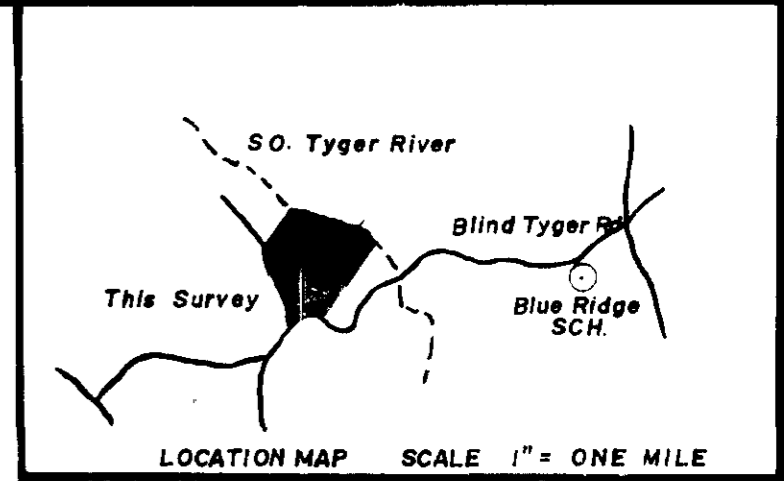


FILED
GREENVILLE CO. S. C.
FEB 15 9 AM '77
W. C. LINDSEY JR.
R.M.C.



Curve Data

- "A" IP
R = 318.61'
Δ = 31° 34'
L = 175.55'
- "B" IP
R = 639.97
Δ = 33° 29'
L = 373.95'
- "C" IP
R = 711.91'
Δ = 17° 52'
L = 222.05'
- "D" IP
R = 440.20'
Δ = 47° 42'
L = 366.43'

References:

- Deed Book 1049 P. 855
- " " 1049 P. 856
- " " 1010 P. 425
- " " 832 P. 451
- " " 313 P. 210
- " " 981 P. 447
- " " 391 P. 411
- " " 1015 P. 53
- " "
- " "
- Plat Book 5-H P. 98
- " " 5-H P. 100

Legend

- ▬ = Property Line
- = Old Iron Pin
- = Iron Pin Set This Survey



W.C. Lindsey Jr.
W. C. Lindsey Jr. Reg. Land Surveyor S.C. No. 6581

21517

5X-73

THIS PLAT IS NOT A SUBDIVISION
AS DEFINED BY THE GREENVILLE
COUNTY SUBDIVISION REGULATIONS.
2/15/77 *Royce Carter*
Director of
Planning,
Greenville County Planning Commission



0 300 600
SCALE: 1" = 300'

FEB 15 '77

MICROFILMED

NOE ESTATE
Located in
HIGHLAND TWP, GREENVILLE COUNTY, S. C.
Surveyed for
JAMES D. NOE
ELIZABETH B. HAMMOND
Surveyed by
W.C. LINDSEY JR. & ASSOC.
Land & Hyarographic Surveyors
Route 1, Taylors, S. C. 29687 Ph. 895-2389
Date: 2-4-77 Scale: 1" = 300' DWG NO. 7701