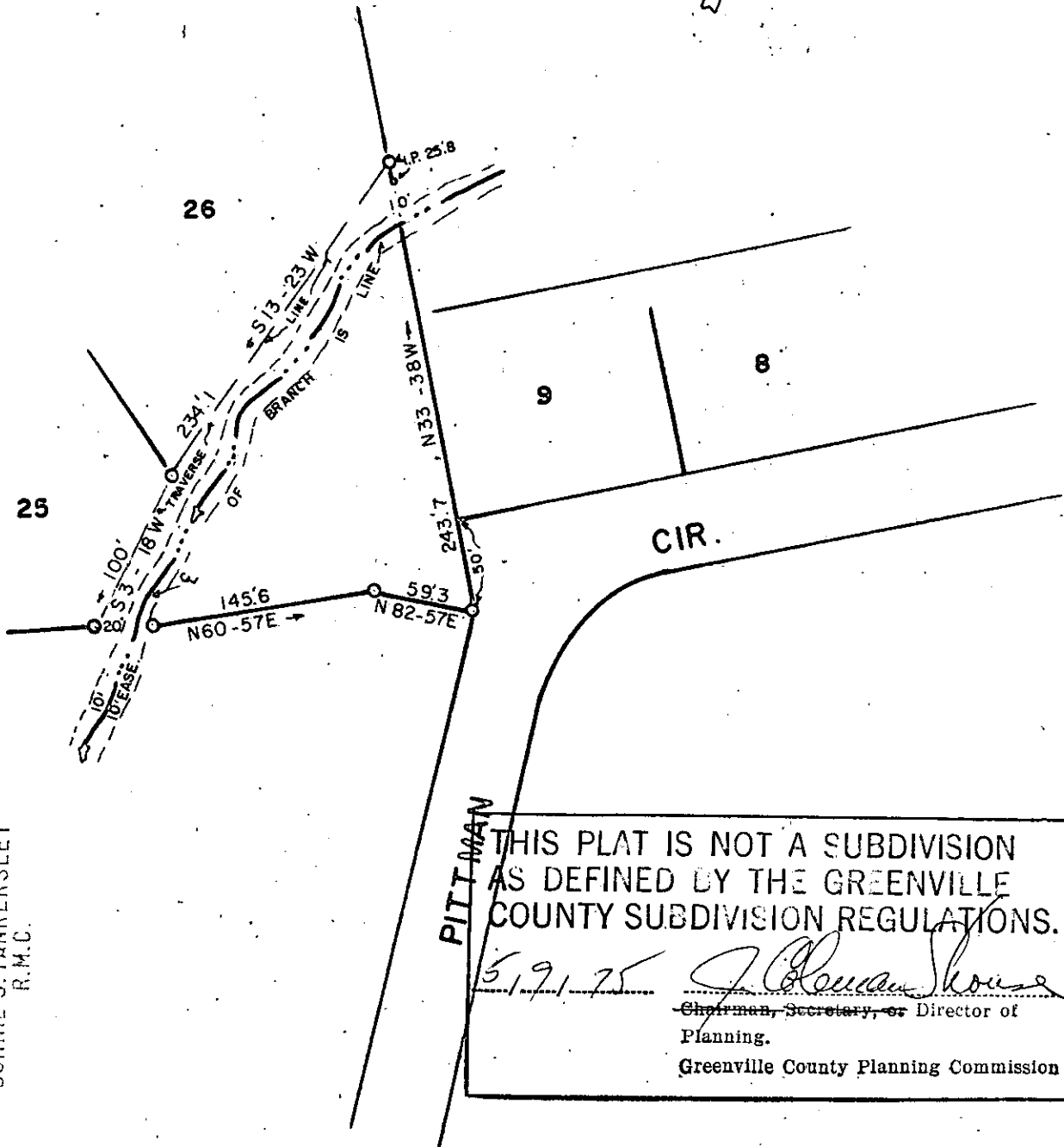
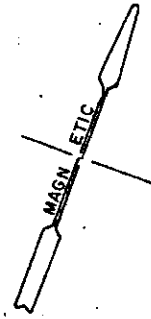


MICROFILMED



FILED
GREENVILLE CO. S. C.
MAY 20 10 31 AM '75
DONNIE S. TANKERSLEY
R.M.C.

THIS PLAT IS NOT A SUBDIVISION
AS DEFINED BY THE GREENVILLE
COUNTY SUBDIVISION REGULATIONS.
5.9.75 *J. Curran House*
Chairman, Secretary, or Director of
Planning.
Greenville County Planning Commission

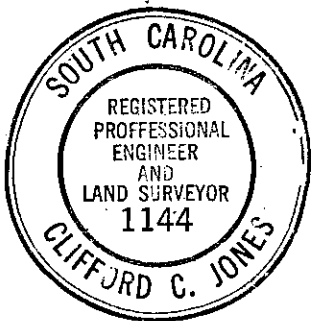
PROPERTY OF 27010

BEATTIE E. HUFF

GREENVILLE COUNTY, S.C.

SCALE 1"=100' DEC. 17, 1974

RECORDING FEE
PAID \$ 1.00



✓ 5M-20
MAY 20 1975