

MICROFIL...

PRICE

S 21-00W 282.62' S 20-57W 193.63'

PRICE
E 88-59W 214.57'

100.27' N 8-30W

1252.61'

12.86 AC.

THIS PLAT IS NOT A SUBDIVISION AS DEFINED BY THE GREENVILLE COUNTY SUBDIVISION REGULATIONS.
1/29/75 *J. Clemon Shoun*
Chairman, Secretary, or Director of Planning.
Greenville County Planning Commission

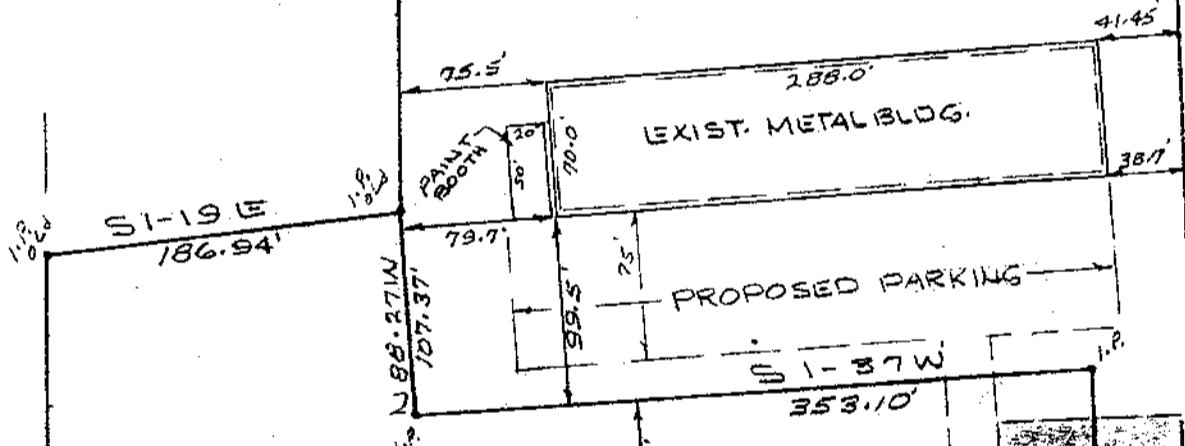
ROBINSON

S 84-55E

WALKER

1605.67'

Magnetic North



MCCRARY

TALLEY REALTY, INC.

S 84-30E

S 84-30E

EXIST. BRICK BLDG.

7.32 AC.

WHITE HORSE RD. N 24-05 E 229.55'

BY-PASS NO. 25 N 20-51 E 200.0'

594' TO EDGEWAY DRIVE

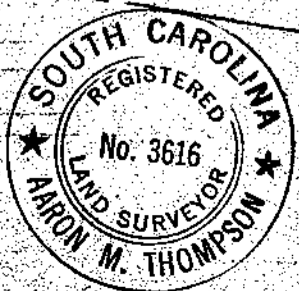
FILED GREENVILLE CO. S.C. JUN 30 10 45 AM '75 DONNIE S. TINKERLEY R.M.C.

JAN 30 1975

PROPERTY OF THE FOLKE COMPANY DEAR GREENVILLE, S.C. SCALE 1"=100' = 1-27-75

RECORDING FEE PAID \$ 3.00

17843



FREDMONT ENGINEERS - ARCHITECTS - PLANNERS GREENVILLE, S.C.

58-13