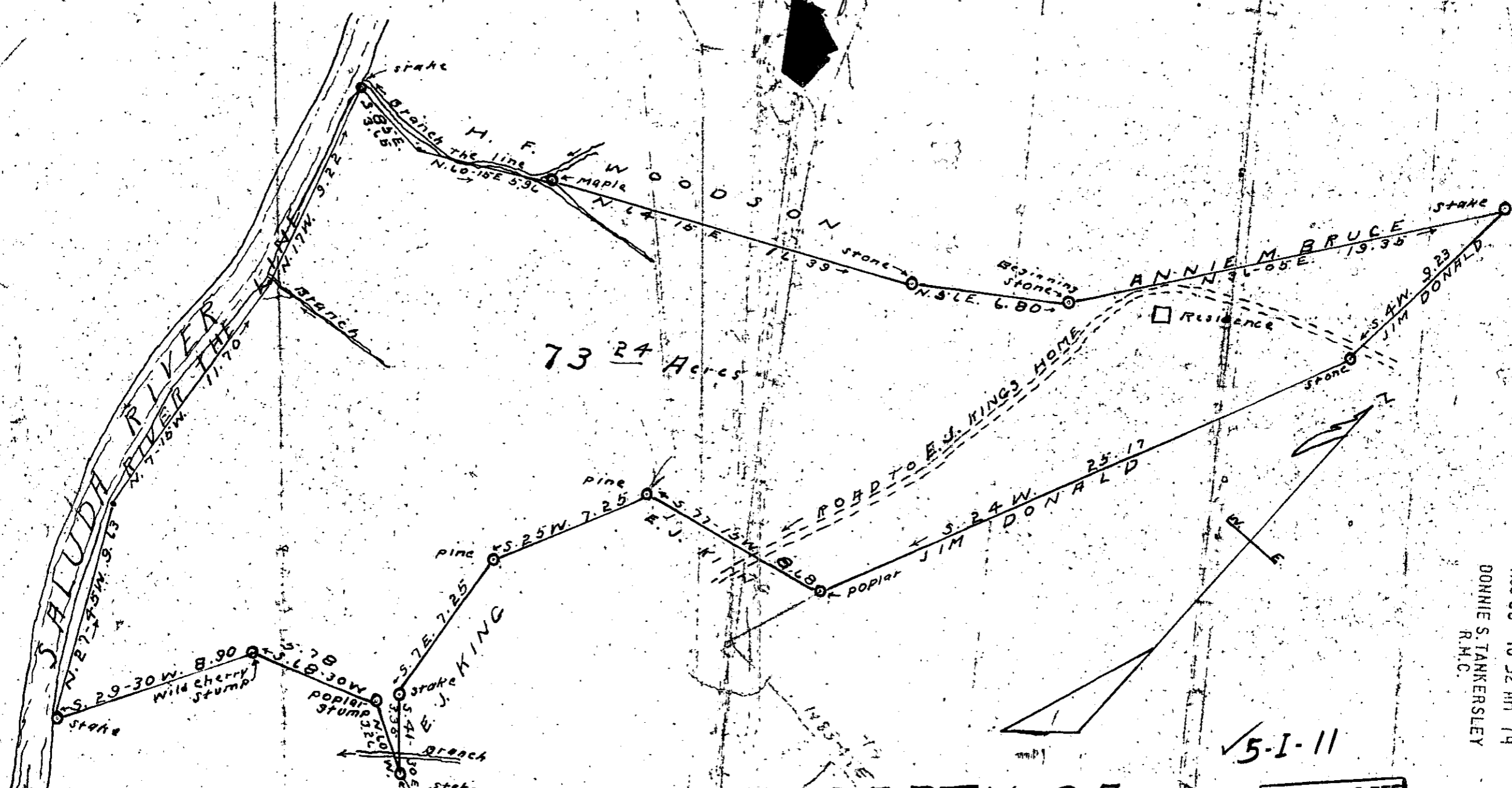


77-43



73 24 Acres

PROPERTY OF GEO. W. SEABORN

Greenville County S.C. Oct. 12 - 1933
Scale 1" = 5 Chains

RECORDING FEE
PAID \$ 1.00

AUG 30 1974

Surveyed and plotted by W. J. Riddle

FILED
AUG 30 10 52 AM '74
DONNIE S. TANKERSLEY
R.M.C.

GREENVILLE CO. S.C.

552

MICROFILMED

5-1-11