

UNIVERSITY RIDGE HORIZONTAL PROPERTY REGIME

GREENVILLE, SOUTH CAROLINA

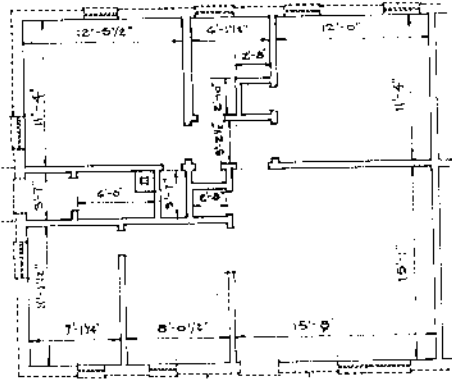
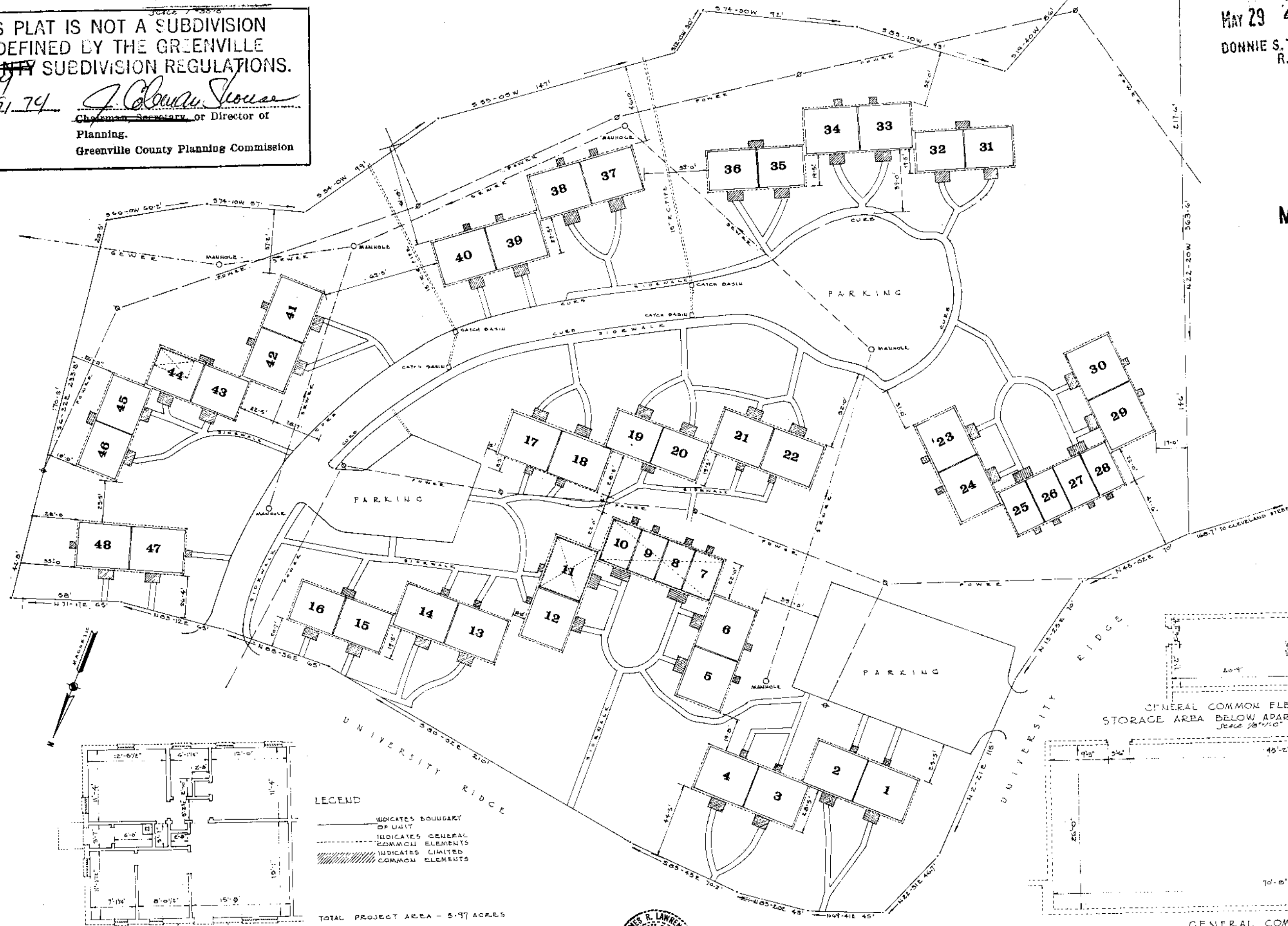
PAGE 2 OF 2

THIS PLAT IS NOT A SUBDIVISION AS DEFINED BY THE GREENVILLE COUNTY SUBDIVISION REGULATIONS.

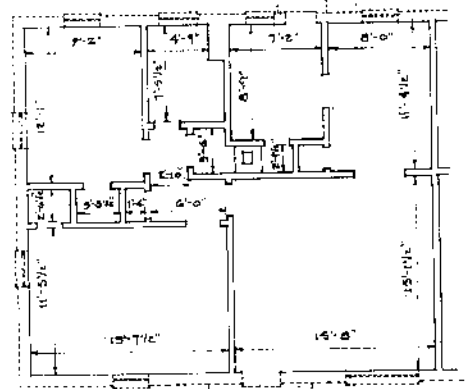
5/29/74 *J. Colman Thomas*
Chairman, Secretary or Director of Planning,
Greenville County Planning Commission

FILED
GREENVILLE CO. S. C.
MAY 29 4 53 PM '74
DONNIE S. TANKERSLEY
R.M.C.

MAY 29 1974



FLOOR PLAN - APARTMENT NOS. 47, 48
Scale 1/8" = 1'-0"



FLOOR PLAN - APARTMENT NOS. 1, 2, 3, 4, 5, 6, 11, 12, 13, 14, 17, 18, 21, 22, 23, 24, 29, 30, 33, 34, 37, 38, 39, 40, 41, 42
Scale 1/8" = 1'-0"

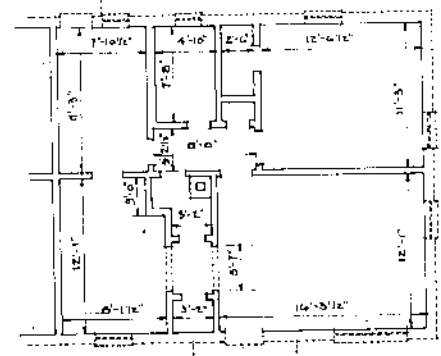
LEGEND
- - - - - INDICATES BOUNDARY OF UNIT
- - - - - INDICATES GENERAL COMMON ELEMENTS
- - - - - INDICATES LIMITED COMMON ELEMENTS

TOTAL PROJECT AREA - 5.97 ACRES

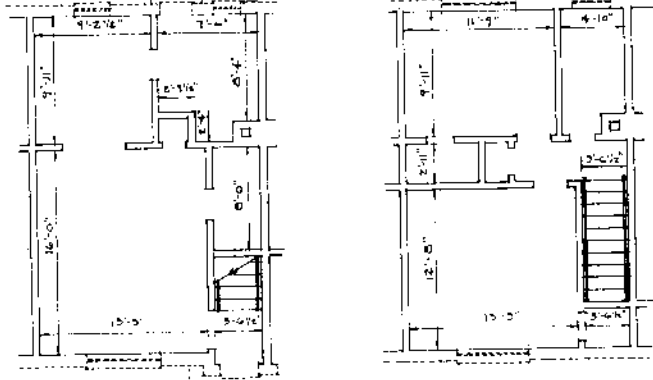
JAMES ROBERTS LAWRENCE, A.A. ARCHITECT
GREENVILLE, SOUTH CAROLINA, MAY 14, 1974



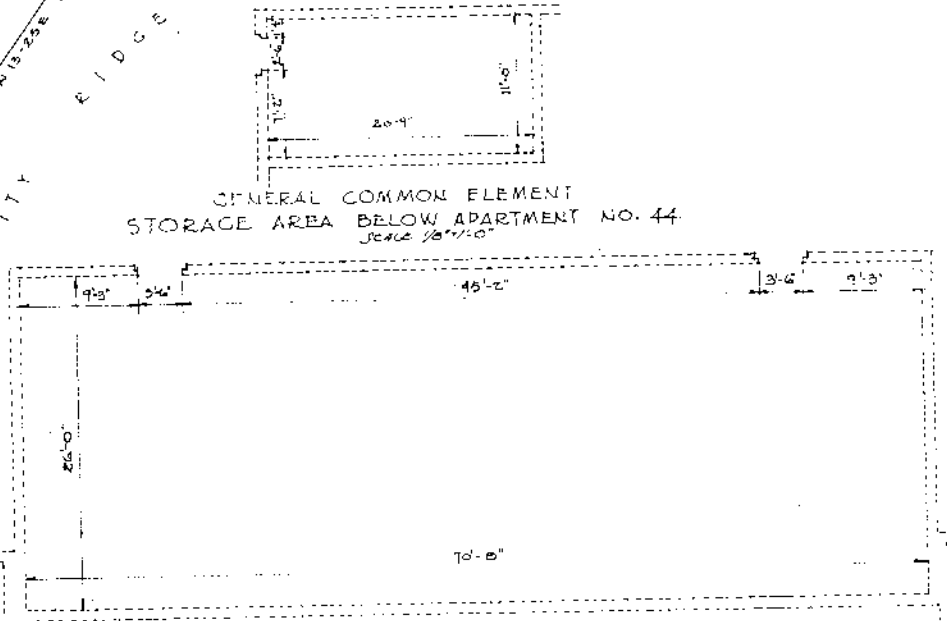
TOTAL NUMBER OF ONE BEDROOM UNITS 12
TOTAL NUMBER OF TWO BEDROOM UNITS 36
TOTAL NUMBER OF APARTMENT UNITS 48



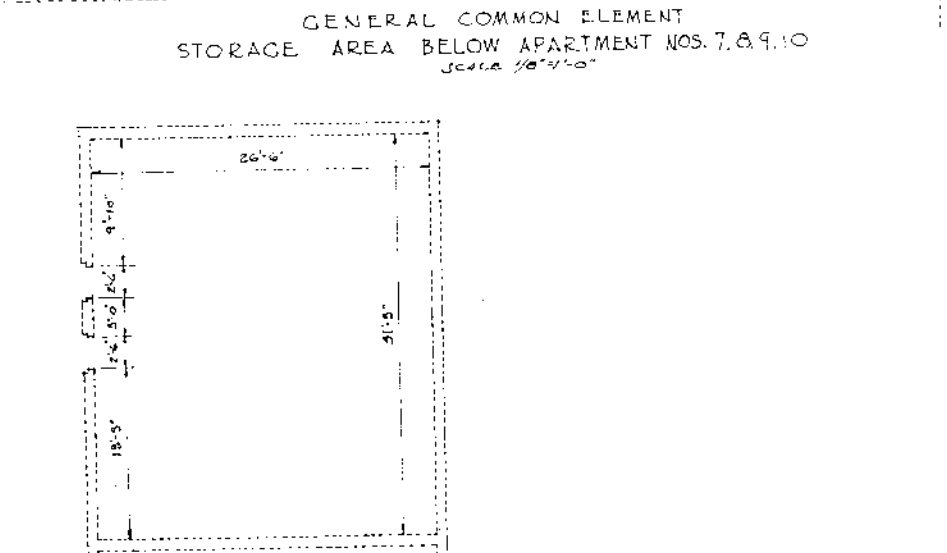
FLOOR PLAN APARTMENT NOS. 15, 16, 19, 20, 31, 32, 35, 36, 43, 44, 45, 46
Scale 1/8" = 1'-0"



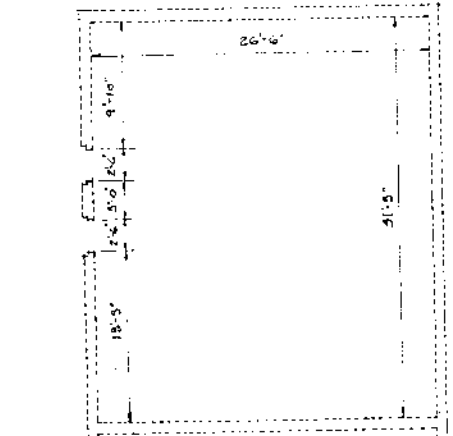
FIRST FLOOR PLAN SECOND FLOOR PLAN
APARTMENT NOS. 7, 8, 9, 10, 25, 26, 27, 28
Scale 1/8" = 1'-0"



GENERAL COMMON ELEMENT STORAGE AREA BELOW APARTMENT NO. 44
Scale 1/8" = 1'-0"



GENERAL COMMON ELEMENT STORAGE AREA BELOW APARTMENT NOS. 7, 8, 9, 10
Scale 1/8" = 1'-0"



GENERAL COMMON ELEMENT STORAGE AREA BELOW APARTMENT NO. 11
Scale 1/8" = 1'-0"

RECORDING FEE
PAID \$ 3.00

5F-56

30315