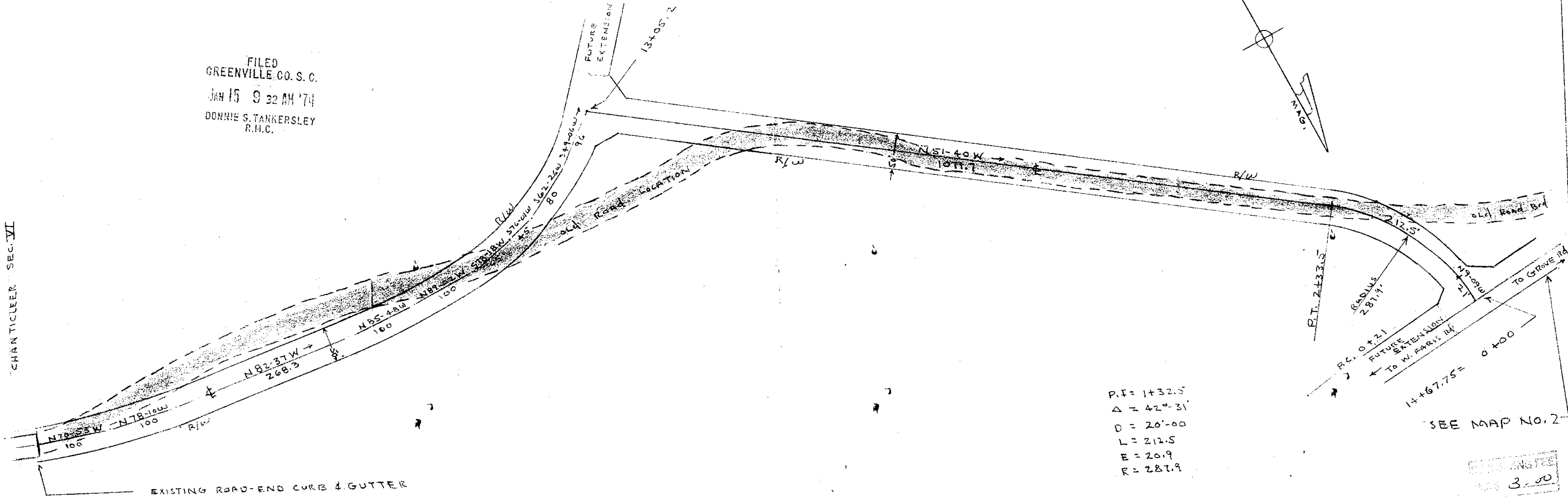


MICROFILMED

FILED
GREENVILLE CO. S. C.
JAN 15 9 32 AM '74
DONNIE S. TANKERSLEY
R.M.C.

CHARTICLE VI SEC. VI



$P.I. = 1+32.5$
 $\Delta = 42^{\circ} 31'$
 $D = 20'-00$
 $L = 212.5$
 $E = 20.9$
 $R = 287.9$

SEE MAP NO. 2

REVISIONS AND FEES
 3.00

MAP NO. 1
 PLAT SHOWING

CHAPMAN ROAD RELOCATION

NEAR THE CITY OF GREENVILLE
 GREENVILLE COUNTY S.C.

WEBB SURVEYING & MAPPING CO.

SCALE 1"=100

JULY 1973

5F-9

17726

5-27-B