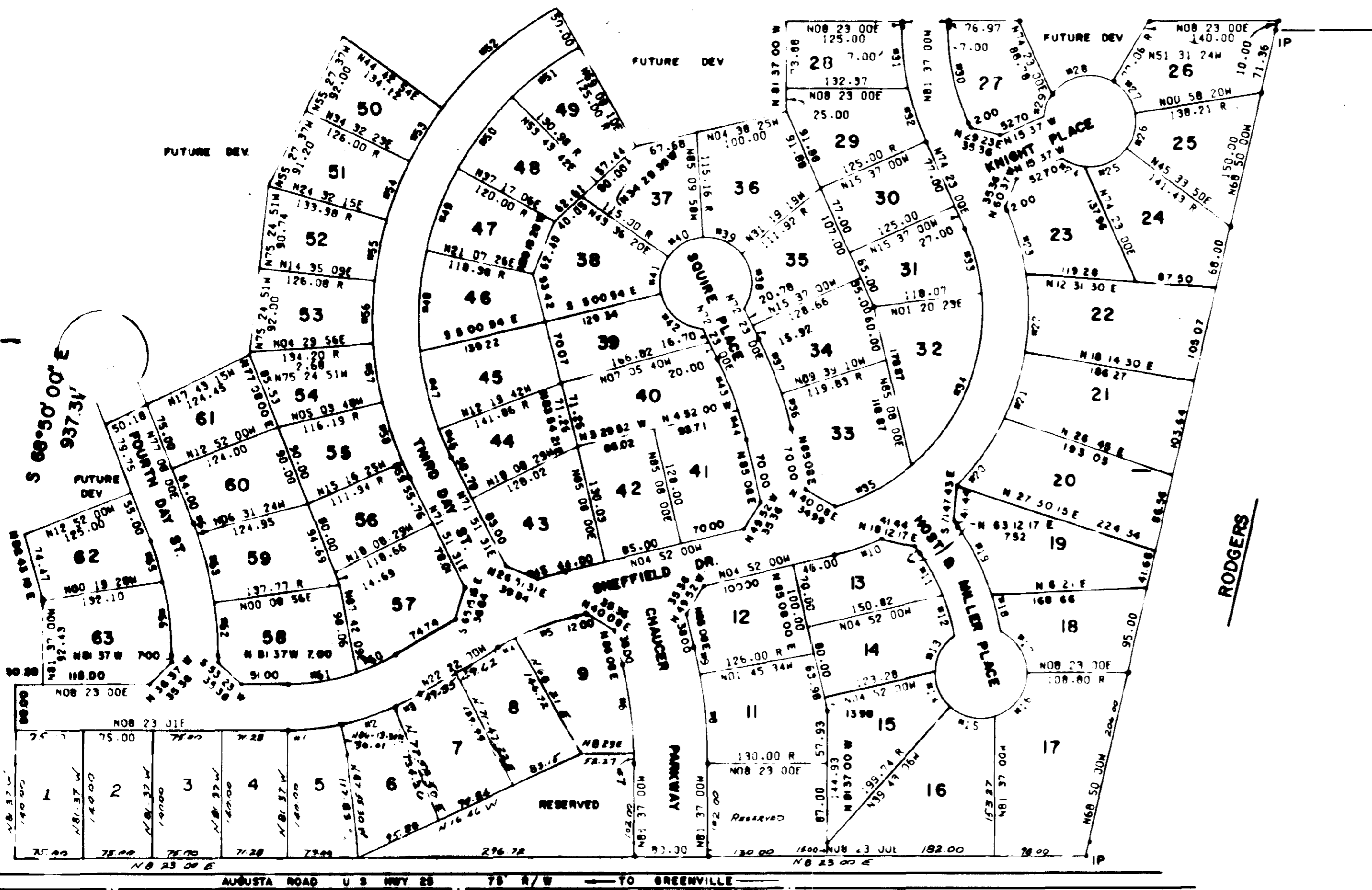


FILED
GREENVILLE CO. S. C.



FORTIS ENTERPRISES

REV. 9/26/72 REVISED LOTS 18-24
REV. 4/14/74 REVISED LOTS 1-9, 16 & 17 & RESERVED LOTS.
REV. 5/1/74 REVISED LOTS 5, 6, 7, & 8



CURVE TABLE

NO.	ARC	RADIUS	BELTA	TAN	L. CH.	CH. BEG.
1	60.20	272.57	18.20/R	30.21	60.20	NR 18.18 E
2	62.72	272.57	18.20/R	31.49	62.72	NR 18.18 E
3	65.24	272.57	18.20/R	32.77	65.24	NR 18.18 E
4	67.76	272.57	18.20/R	34.05	67.76	NR 18.18 E
5	70.28	272.57	18.20/R	35.33	70.28	NR 18.18 E
6	72.80	272.57	18.20/R	36.61	72.80	NR 18.18 E
7	75.32	272.57	18.20/R	37.89	75.32	NR 18.18 E
8	77.84	272.57	18.20/R	39.17	77.84	NR 18.18 E
9	80.36	272.57	18.20/R	40.45	80.36	NR 18.18 E
10	82.88	272.57	18.20/R	41.73	82.88	NR 18.18 E
11	85.40	272.57	18.20/R	43.01	85.40	NR 18.18 E
12	87.92	272.57	18.20/R	44.29	87.92	NR 18.18 E
13	90.44	272.57	18.20/R	45.57	90.44	NR 18.18 E
14	92.96	272.57	18.20/R	46.85	92.96	NR 18.18 E
15	95.48	272.57	18.20/R	48.13	95.48	NR 18.18 E
16	98.00	272.57	18.20/R	49.41	98.00	NR 18.18 E
17	100.52	272.57	18.20/R	50.69	100.52	NR 18.18 E
18	103.04	272.57	18.20/R	51.97	103.04	NR 18.18 E
19	105.56	272.57	18.20/R	53.25	105.56	NR 18.18 E
20	108.08	272.57	18.20/R	54.53	108.08	NR 18.18 E
21	110.60	272.57	18.20/R	55.81	110.60	NR 18.18 E
22	113.12	272.57	18.20/R	57.09	113.12	NR 18.18 E
23	115.64	272.57	18.20/R	58.37	115.64	NR 18.18 E
24	118.16	272.57	18.20/R	59.65	118.16	NR 18.18 E
25	120.68	272.57	18.20/R	60.93	120.68	NR 18.18 E
26	123.20	272.57	18.20/R	62.21	123.20	NR 18.18 E
27	125.72	272.57	18.20/R	63.49	125.72	NR 18.18 E
28	128.24	272.57	18.20/R	64.77	128.24	NR 18.18 E
29	130.76	272.57	18.20/R	66.05	130.76	NR 18.18 E
30	133.28	272.57	18.20/R	67.33	133.28	NR 18.18 E
31	135.80	272.57	18.20/R	68.61	135.80	NR 18.18 E
32	138.32	272.57	18.20/R	69.89	138.32	NR 18.18 E
33	140.84	272.57	18.20/R	71.17	140.84	NR 18.18 E
34	143.36	272.57	18.20/R	72.45	143.36	NR 18.18 E
35	145.88	272.57	18.20/R	73.73	145.88	NR 18.18 E
36	148.40	272.57	18.20/R	75.01	148.40	NR 18.18 E
37	150.92	272.57	18.20/R	76.29	150.92	NR 18.18 E
38	153.44	272.57	18.20/R	77.57	153.44	NR 18.18 E
39	155.96	272.57	18.20/R	78.85	155.96	NR 18.18 E
40	158.48	272.57	18.20/R	80.13	158.48	NR 18.18 E
41	161.00	272.57	18.20/R	81.41	161.00	NR 18.18 E
42	163.52	272.57	18.20/R	82.69	163.52	NR 18.18 E
43	166.04	272.57	18.20/R	83.97	166.04	NR 18.18 E
44	168.56	272.57	18.20/R	85.25	168.56	NR 18.18 E
45	171.08	272.57	18.20/R	86.53	171.08	NR 18.18 E
46	173.60	272.57	18.20/R	87.81	173.60	NR 18.18 E
47	176.12	272.57	18.20/R	89.09	176.12	NR 18.18 E
48	178.64	272.57	18.20/R	90.37	178.64	NR 18.18 E
49	181.16	272.57	18.20/R	91.65	181.16	NR 18.18 E
50	183.68	272.57	18.20/R	92.93	183.68	NR 18.18 E
51	186.20	272.57	18.20/R	94.21	186.20	NR 18.18 E
52	188.72	272.57	18.20/R	95.49	188.72	NR 18.18 E
53	191.24	272.57	18.20/R	96.77	191.24	NR 18.18 E
54	193.76	272.57	18.20/R	98.05	193.76	NR 18.18 E
55	196.28	272.57	18.20/R	99.33	196.28	NR 18.18 E
56	198.80	272.57	18.20/R	100.61	198.80	NR 18.18 E
57	201.32	272.57	18.20/R	101.89	201.32	NR 18.18 E
58	203.84	272.57	18.20/R	103.17	203.84	NR 18.18 E
59	206.36	272.57	18.20/R	104.45	206.36	NR 18.18 E
60	208.88	272.57	18.20/R	105.73	208.88	NR 18.18 E
61	211.40	272.57	18.20/R	107.01	211.40	NR 18.18 E
62	213.92	272.57	18.20/R	108.29	213.92	NR 18.18 E
63	216.44	272.57	18.20/R	109.57	216.44	NR 18.18 E

LOCATION MAP

CERTIFICATE OF OWNERSHIP AND DEDICATION

"The undersigned hereby acknowledge that I am (we are) the owner(s) of the property shown and described hereon and that I (we) hereby dedicate the same to the public use as roads, streets, and easements, forever all areas so shown or indicated on said plat.
5/1/74 Signed: Morris Stanley
/ / Signed: _____
/ / Signed: _____
/ / Signed: _____

CERTIFICATE OF ACCURACY

"I, R. E. BLACKMORE, Surveyor of Greenville County, South Carolina, do hereby certify that the above described plat was prepared by me or under my supervision and that the same is true and correct in accordance with the provisions of the Act of March 1, 1909, and the Act of March 1, 1914, and the Act of March 1, 1924, and the Act of March 1, 1934, and the Act of March 1, 1944, and the Act of March 1, 1954, and the Act of March 1, 1964, and the Act of March 1, 1974, and the Act of March 1, 1984, and the Act of March 1, 1994, and the Act of March 1, 2004, and the Act of March 1, 2014, and the Act of March 1, 2024.
Date: 5/2/74 Signed: Ronald E. Blackmore
S. C. Registration No. 5291

CERTIFICATE OF ACCURACY

"I hereby certify that the subdivision shown on this plat has been found to comply with the provisions of the Act of March 1, 1909, and the Act of March 1, 1914, and the Act of March 1, 1924, and the Act of March 1, 1934, and the Act of March 1, 1944, and the Act of March 1, 1954, and the Act of March 1, 1964, and the Act of March 1, 1974, and the Act of March 1, 1984, and the Act of March 1, 1994, and the Act of March 1, 2004, and the Act of March 1, 2014, and the Act of March 1, 2024.
Date: May 2, 1974 Signed: J. Coleman Jones
Greenville County Planning Commission

FILE NUMBER 72-105

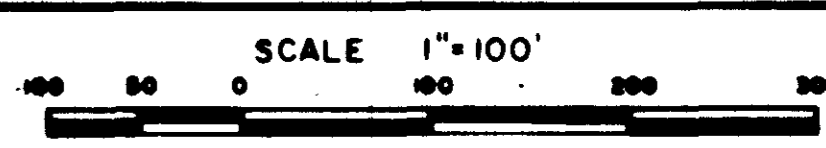
REVISED Lots 5, 6, 7, & 8
DATE 5/2/74 **FINAL PLAT**

CANTERBURY SUBD. SECTION I

FORTIS ENTERPRISES HEARNER ENGR CO INC
GREENVILLE, S C GREENWOOD, S C

NO. OF ACRES 22 69 **MILES OF NEW ROAD 0 81**

NO. OF LOTS 63 **DATE 3/22/72**
REVISION 4/7/72
9/26/72
4/14/74



NOTE: There will be a 5' drainage and utility easement along all side and rear lot lines. The strip along Hwy 25 to be used as a beautification strip only. No buildings or displays allowed within or across this strip.

27670 Filed This 2 day of May 1974
And Recorded in Vol. 5 D Page 53 at 1:24 PM
Dannie J. Sandusky
Register-Measurer Greenville County, S. C.

27670
5D-52

