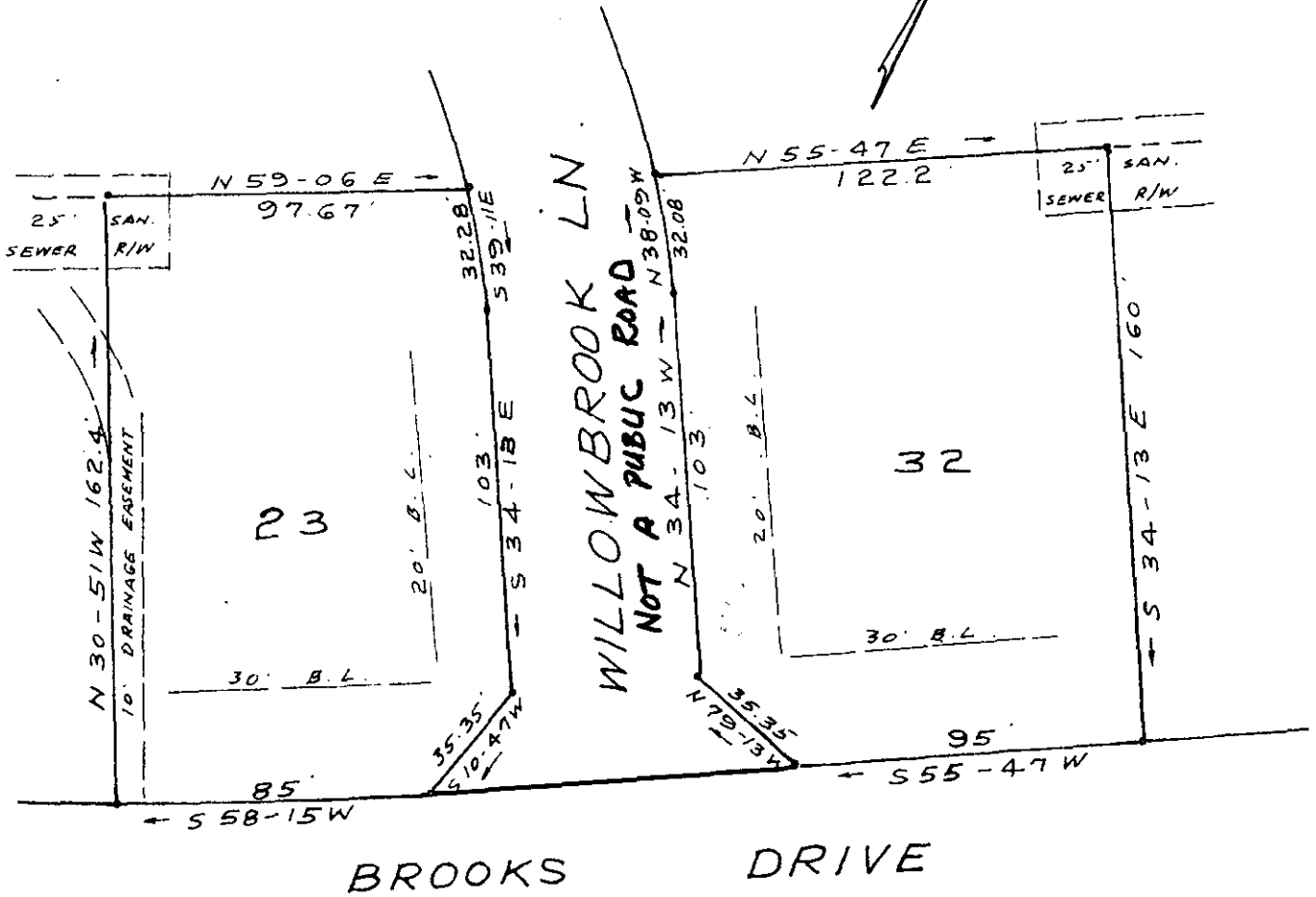
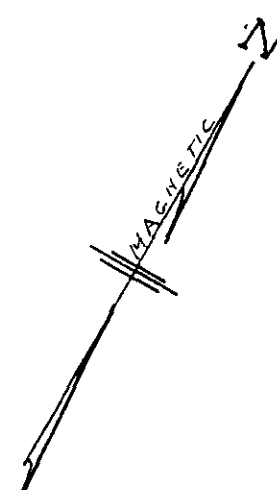


RECORDING FEE
PAID \$ *1.00*

THIS PLAT IS NOT A SUBDIVISION
AS DEFINED BY THE GREENVILLE
COUNTY SUBDIVISION REGULATIONS.

6/20/73 *J. Lewan Shouse*
~~Chairman, Secretary, or Director of~~
Planning.
Greenville County Planning Commission



LOTS 23 & 32
BROOKSIDE SEC. II
PROPERTY OF
DONALD E. BALTZ
MAULDIN S. C.
SCALE 1" = 50' JUNE 14, 1973

5A-68 36872
JUN 20 1973