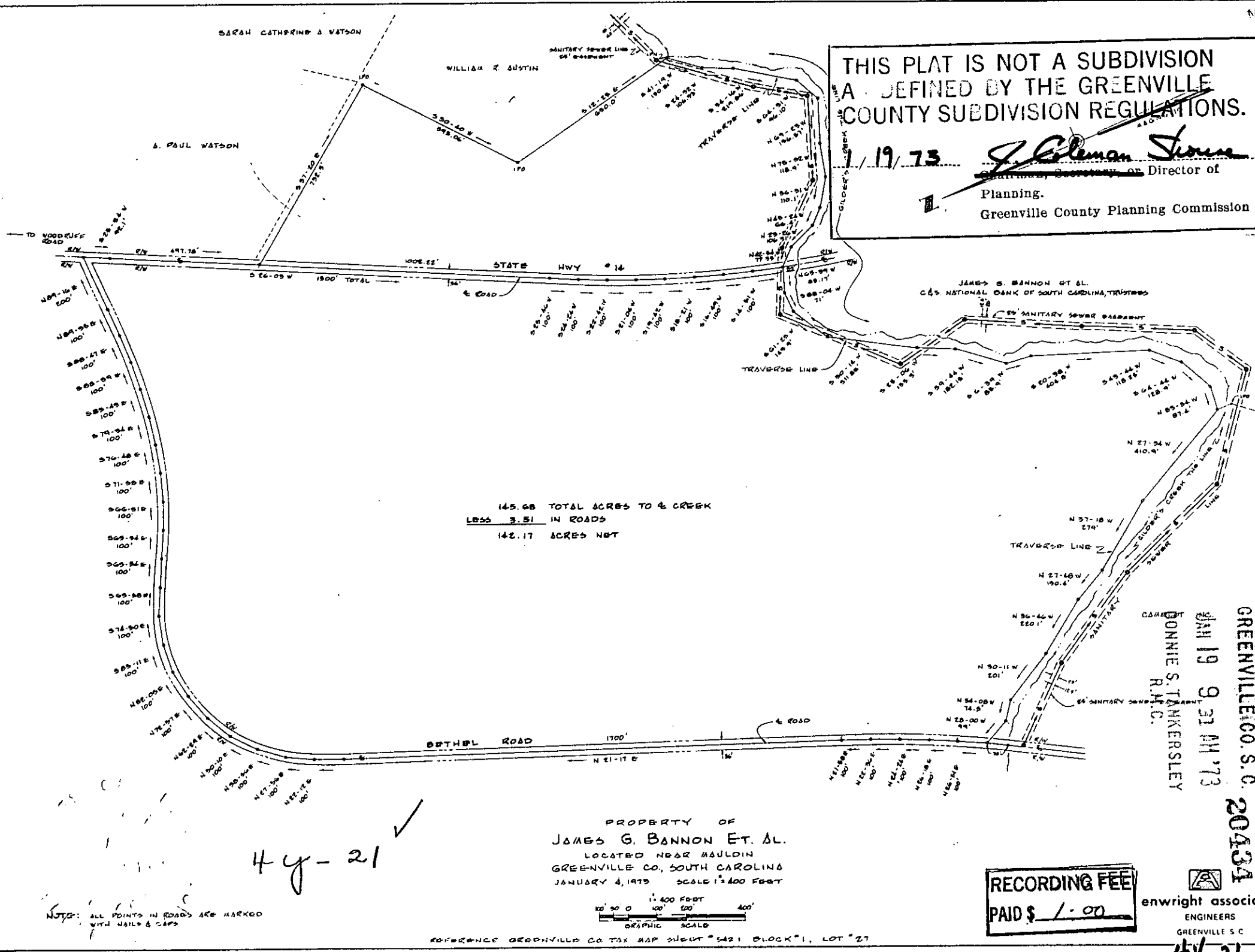


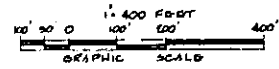
THIS PLAT IS NOT A SUBDIVISION
 AS DEFINED BY THE GREENVILLE
 COUNTY SUBDIVISION REGULATIONS.

1/19/73 *J. Cleman Shreve*
 Chairman, Secretary, or Director of
 Planning.
 Greenville County Planning Commission



145.68 TOTAL ACRES TO & CREEK
 LOSS 3.51 IN ROADS
 142.17 ACRES NET

PROPERTY OF
 JAMES G. BANNON ET AL.
 LOCATED NEAR MAULDIN
 GREENVILLE CO., SOUTH CAROLINA
 JANUARY 4, 1973 SCALE 1" = 400 FEET



REFERENCE GREENVILLE CO. TAX MAP SHEET "5421 BLOCK "1, LOT "27

NOTE: ALL POINTS IN ROADS ARE MARKED WITH NAILS & SOPS

RECORDING FEE
 PAID \$ 1.00

FILED
 GREENVILLE CO. S. C. 201334
 JAN 19 9 31 AM '73
 DONNIE S. TANKERSLEY
 R.M.C.
 enrwright associates
 ENGINEERS
 GREENVILLE S. C.

47-21

47-21 ✓

47-21