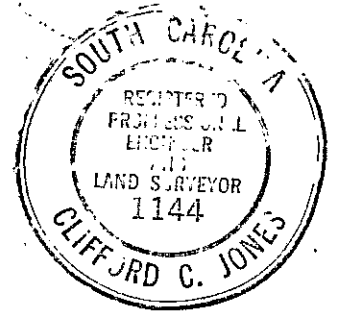
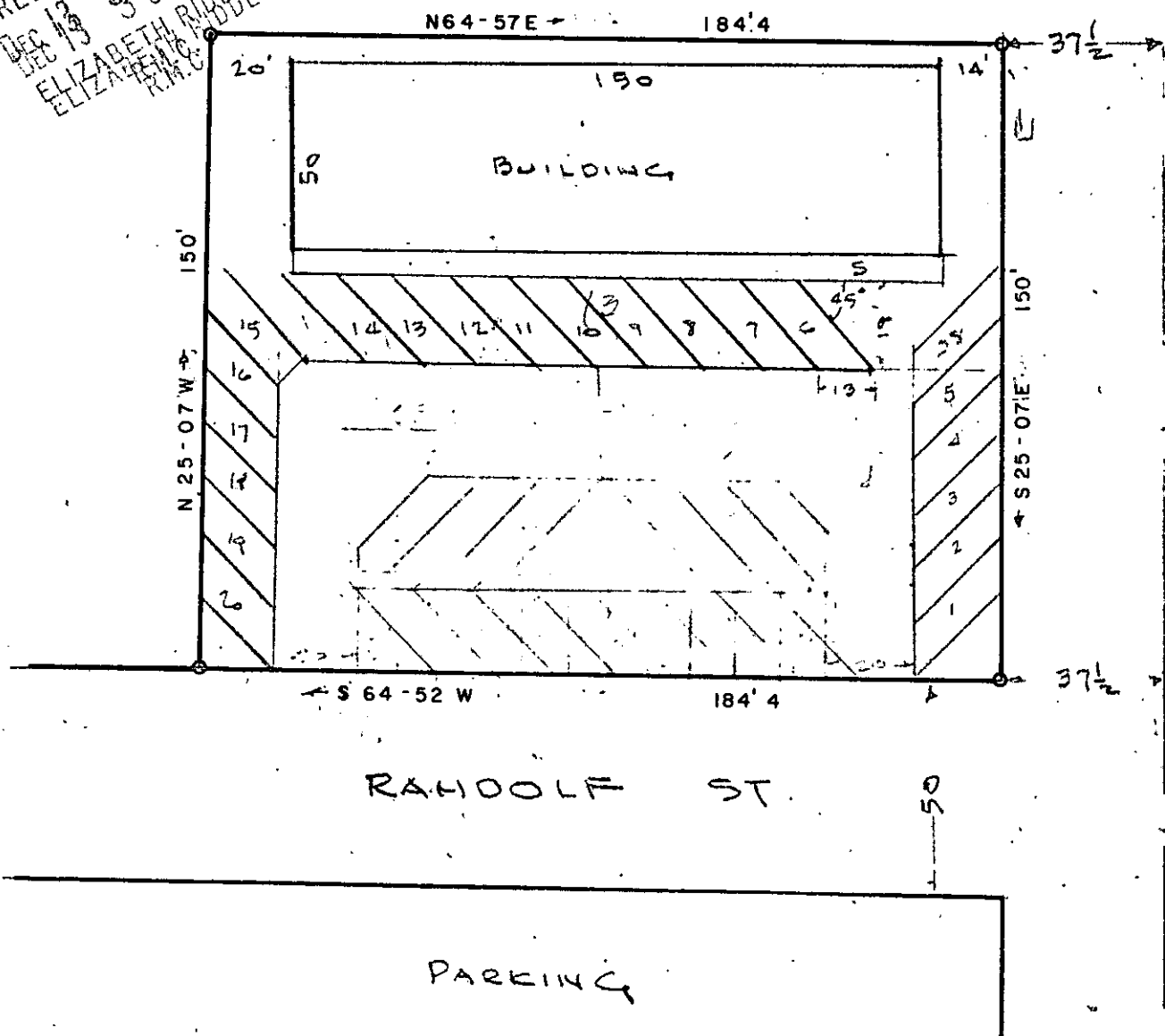


RECORDING FEE
PAID \$ 100

GREENVILLE, S.C.
DEC 13 3 58 PM '72
ELIZABETH RIDDLE
R.M.C.



PROPOSED
COMMERCIAL BLDG
GREENVILLE CO, S.C
Scale 1"=40' JUNE 1972

DEC 13 1972 17322

HW-106 ✓

1004 E. Perry St. Greenville, S.C.
JONES ENGINEERING SERVICES

4W-106