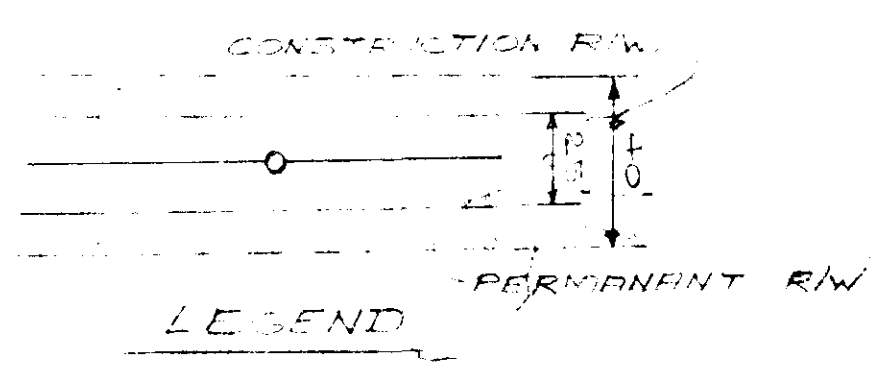
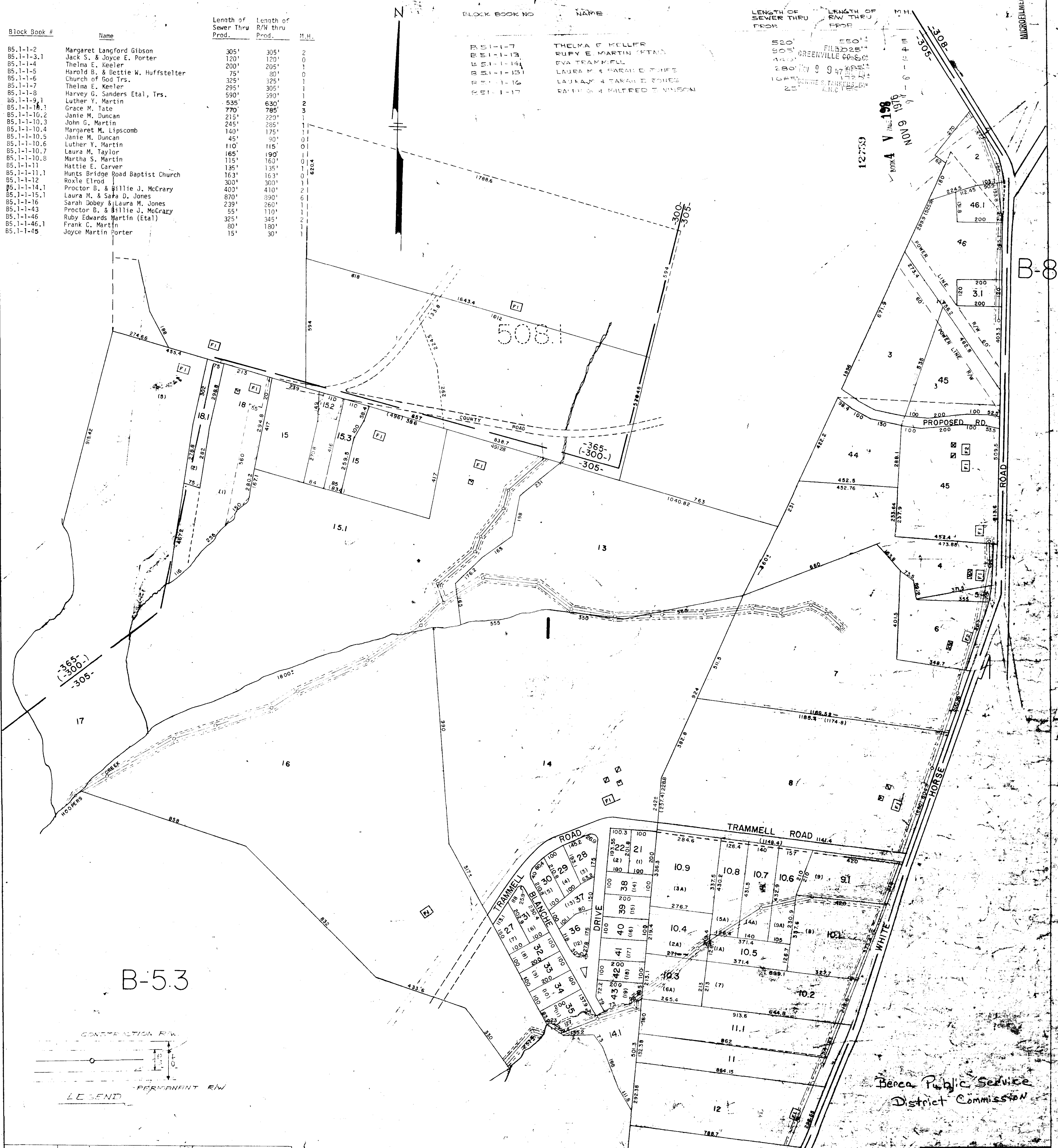


Block Book #	Name	Length of Sewer Thru Prod.	Length of R/W thru Prod.	M.H.
B5.1-1-2	Margaret Langford Gibson	305'	305'	2
B5.1-1-3.1	Jack S. & Joyce E. Porter	120'	120'	0
B5.1-1-4	Thelma E. Keeler	200'	205'	1
B5.1-1-5	Harold B. & Bettie W. Huffstelter	75'	80'	0
B5.1-1-6	Church of God Trs.	325'	325'	1
B5.1-1-7	Thelma E. Keeler	295'	305'	1
B5.1-1-8	Harvey G. Sanders Etal, Trs.	590'	590'	1
B5.1-1-9.1	Luther Y. Martin	535'	630'	2
B5.1-1-10.1	Grace M. Tate	770'	785'	3
B5.1-1-10.2	Janie M. Duncan	215'	220'	1
B5.1-1-10.3	John G. Martin	245'	285'	1
B5.1-1-10.4	Margaret M. Lipscomb	140'	175'	1
B5.1-1-10.5	Janie M. Duncan	45'	90'	0
B5.1-1-10.6	Luther Y. Martin	110'	115'	0
B5.1-1-10.7	Laura M. Taylor	165'	190'	1
B5.1-1-10.8	Martha S. Martin	115'	160'	1
B5.1-1-11	Hattie E. Carver	135'	135'	1
B5.1-1-11.1	Hunts Bridge Road Baptist Church	163'	163'	0
B5.1-1-12	Roxie Etrod	300'	300'	1
B5.1-1-14.1	Proctor B. & Billie J. McCrary	400'	410'	1
B5.1-1-15.1	Laura M. & Sara D. Jones	870'	890'	1
B5.1-1-16	Sarah Doby & Laura M. Jones	239'	260'	1
B5.1-1-43	Proctor B. & Billie J. McCrary	55'	110'	1
B5.1-1-46	Ruby Edwards Martin (Etal)	325'	345'	2
B5.1-1-46.1	Frank C. Martin	80'	180'	1
B5.1-1-45	Joyce Martin Porter	15'	30'	1

Block Book No	Name
B5.1-1-7	THELMA E. KELLER
B5.1-1-13	RUBY E. MARTIN (ETAL)
B5.1-1-14	EVA TRAMMELL
B5.1-1-15.1	LAURA M. & SARA D. JONES
B5.1-1-16	LAURAM & SARAH D. JONES
B5.1-1-17	RAE S. & MILFRED T. VINSON

LENGTH OF SEWER THRU FROM	LENGTH OF R/W THRU FROM	M.H.
582.0'	550'	
140.0'	125'	
280'	280'	
165'	170'	
25'	25'	



B-5.3

B-5.2

Berea Public Service District Commission

REVISIONS	PIEDMONT ENGINEERS & ARCHITECTS
NO. DATE BY	
1 10-22-70	PUT HOLD ON SIDEWALK
2 12-29-70	REMOVE HOLD
3 5/1/76	RELOCATED LINE ON LOTS 9, 10, 11, 12, 13, 14, 15, 16, 17
4 6/27/76	ADDED M.H. ON LOT 10.3

RELEASED — 9-22-75  
 Re-Released 12-30-75  
 Re-Released 5-4-76  
 Re-Released 6-3-76

**SHEET-1-U**

GREATER GREENVILLE TAX MAPS  
 GREENVILLE, S.C.

TAX DISTRICT	MAP NUMBER	REVISIONS
365	<b>B5.1</b>	

SCALE: 1" = 200'  
 INDEX: 13  
 BEREA II AREA U