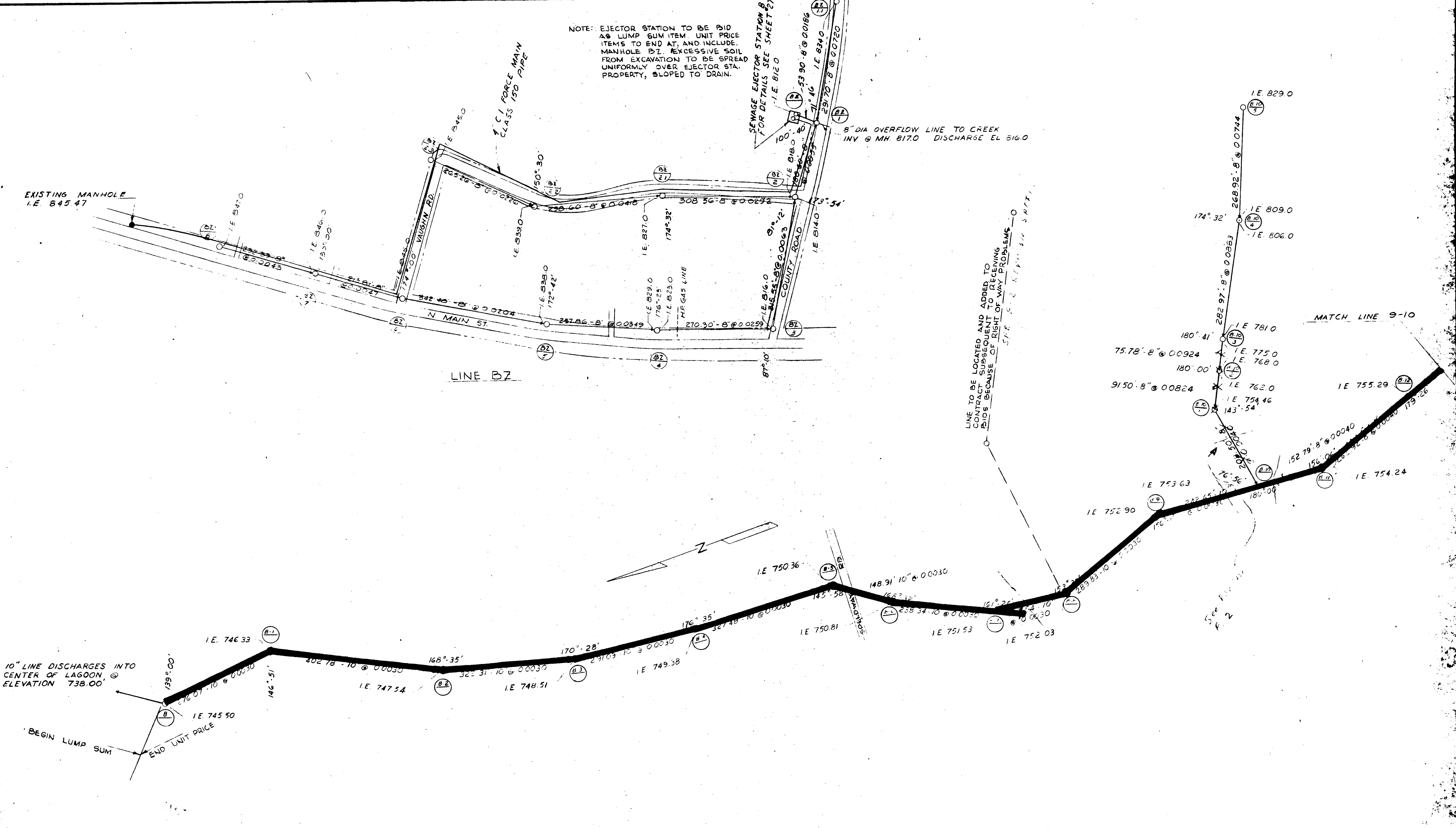
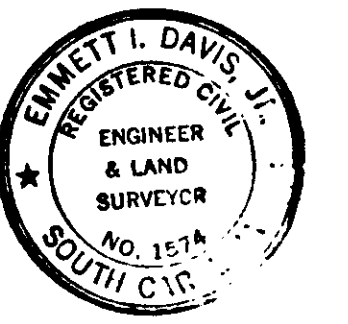


NOTE: EJECTOR STATION TO BE BID AS LUMP SUM ITEM. UNIT PRICE ITEMS TO END AT, AND INCLUDE, MANHOLE BZ EXCESSIVE SOIL FROM EXCAVATION TO BE SPREAD UNIFORMLY OVER EJECTOR STA. PROPERTY, SLOPED TO DRAIN.



LINE TO BE LOCATED AND ADDED TO CONTRACT SUBSEQUENT TO RECEIVING BIDS BECAUSE OF RIGHT OF WAY PROBLEMS. SEE P. 2 REVISION SHEETS.

10" LINE DISCHARGES INTO CENTER OF LAGOON @ ELEVATION 738.00'
 BEGIN LUMP SUM
 END UNIT PRICE



BOOK 4 V PAGE 148

PRINTED
 MAR 23 1971

DAVIS AND FLOYD ENGINEERS, INC. CONSULTING ENGINEERS GREENWOOD, S. C. ATLANTA, GA.	OWNER TOWN OF FOUNTAIN INN FOUNTAIN INN, S. C.	TITLE SEWER LINES, B TO B-12 & B-2 TO B-2.2	DESIGNED: T. E. N.	SCALE: 1"=100'	CONTRACT NO. WPG-50-13
			DRAWN: T. E. N.	DATE: MAY 1966	SH. 9 OF 9
			CHECKED: P. R. F.	DATE: MAY 1966	
			APPROVED: P. R. F.	REVISIONS	