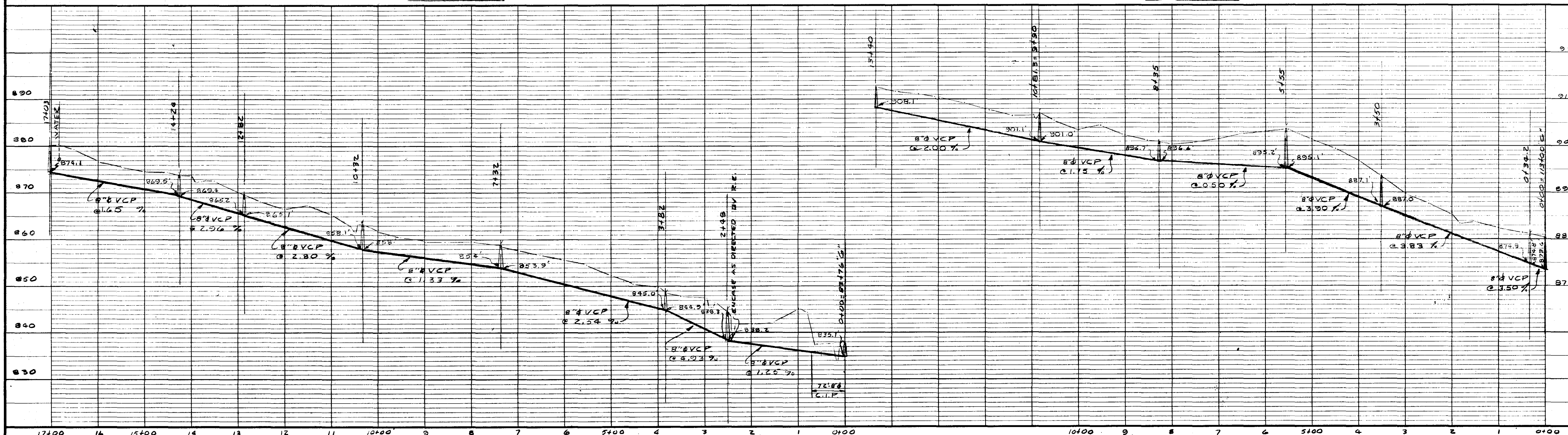


LINE "G-9"

PLAN

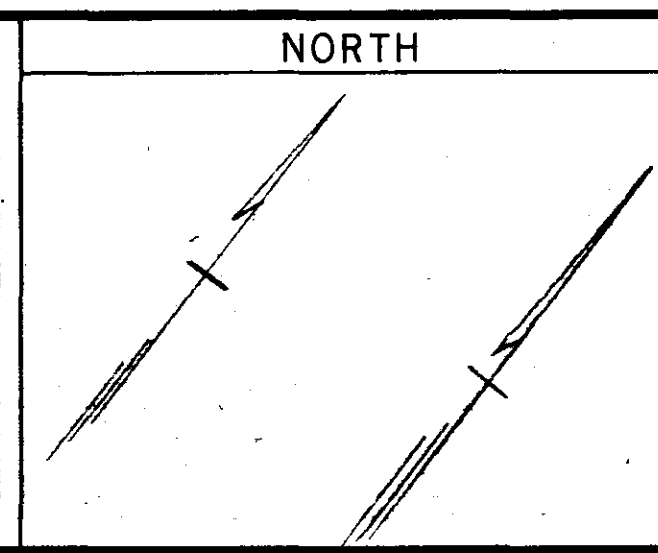
LINE "G-10"



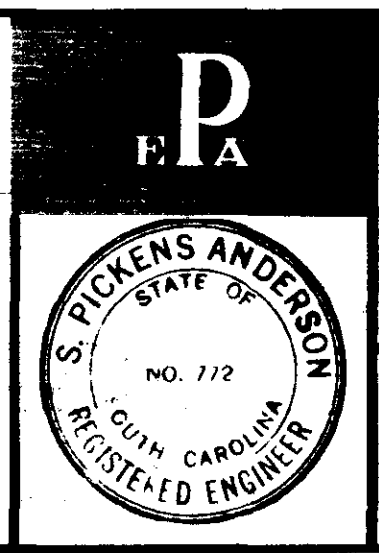
PROFILE

BOOK 4 V PAGE 138
 LINES G-9 & G-10

NO.	DATE	BY	DESCRIPTION
1	9/1/67	R.L.C.	REVISED LINE "G-10"
2	9/24/67	R.L.C.	REVISED LINE "G-10"



SCALE
 HORIZONTALLY
 1" = 100'
 VERTICALLY
 1" = 10'



PROJ. NO. WS-3-41-011
 TOWN OF MAULDIN
 GREENVILLE COUNTY, S.C.
 GILDER CREEK BASIN
 SANITARY SEWERS
 PLAN AND PROFILE
 INTERCEPTOR SYSTEM
 P I E D M O N T
 ENGINEERS & ARCHITECTS
 420 PARK AVE., GREENVILLE, S.C.

SHEET NO.
42
 DWN R.L.C.
 CKD P.E.D.
 APPD
 JOB 20020
 DATE 4-24-67