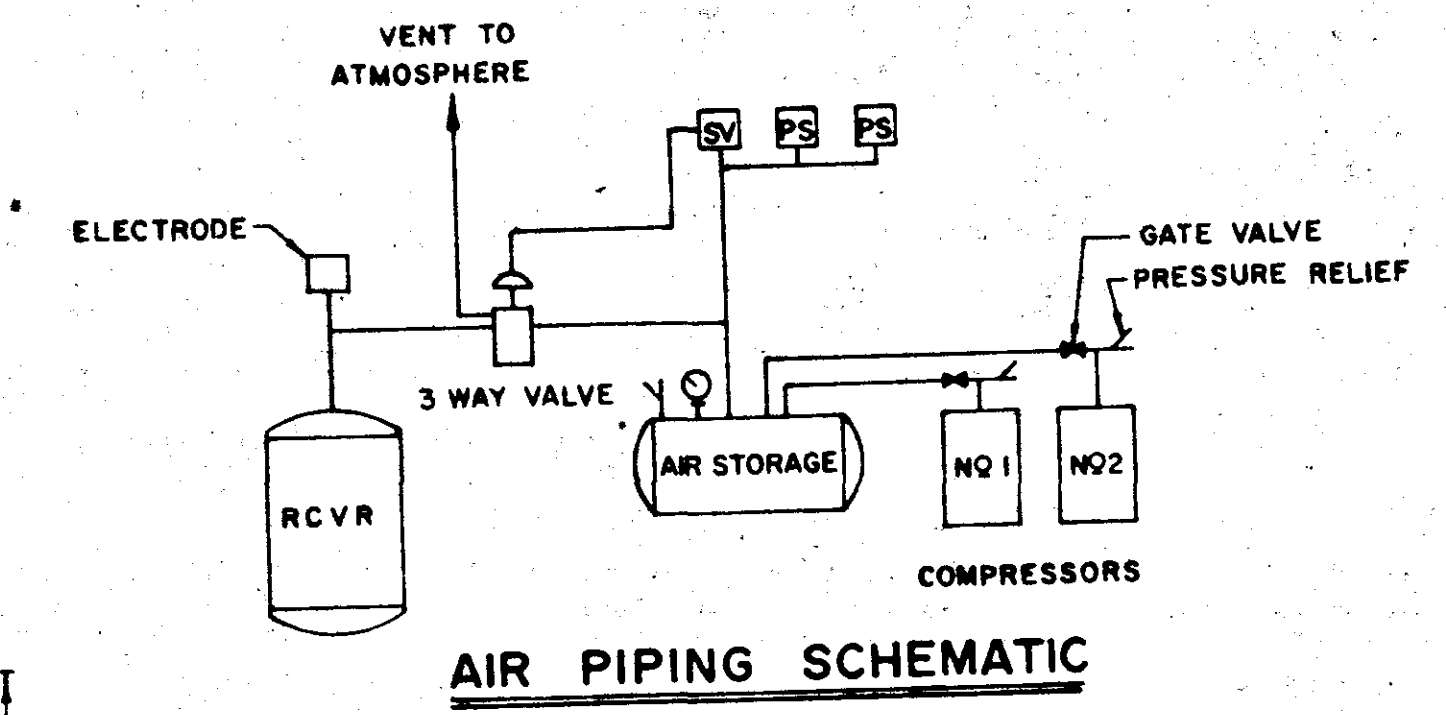
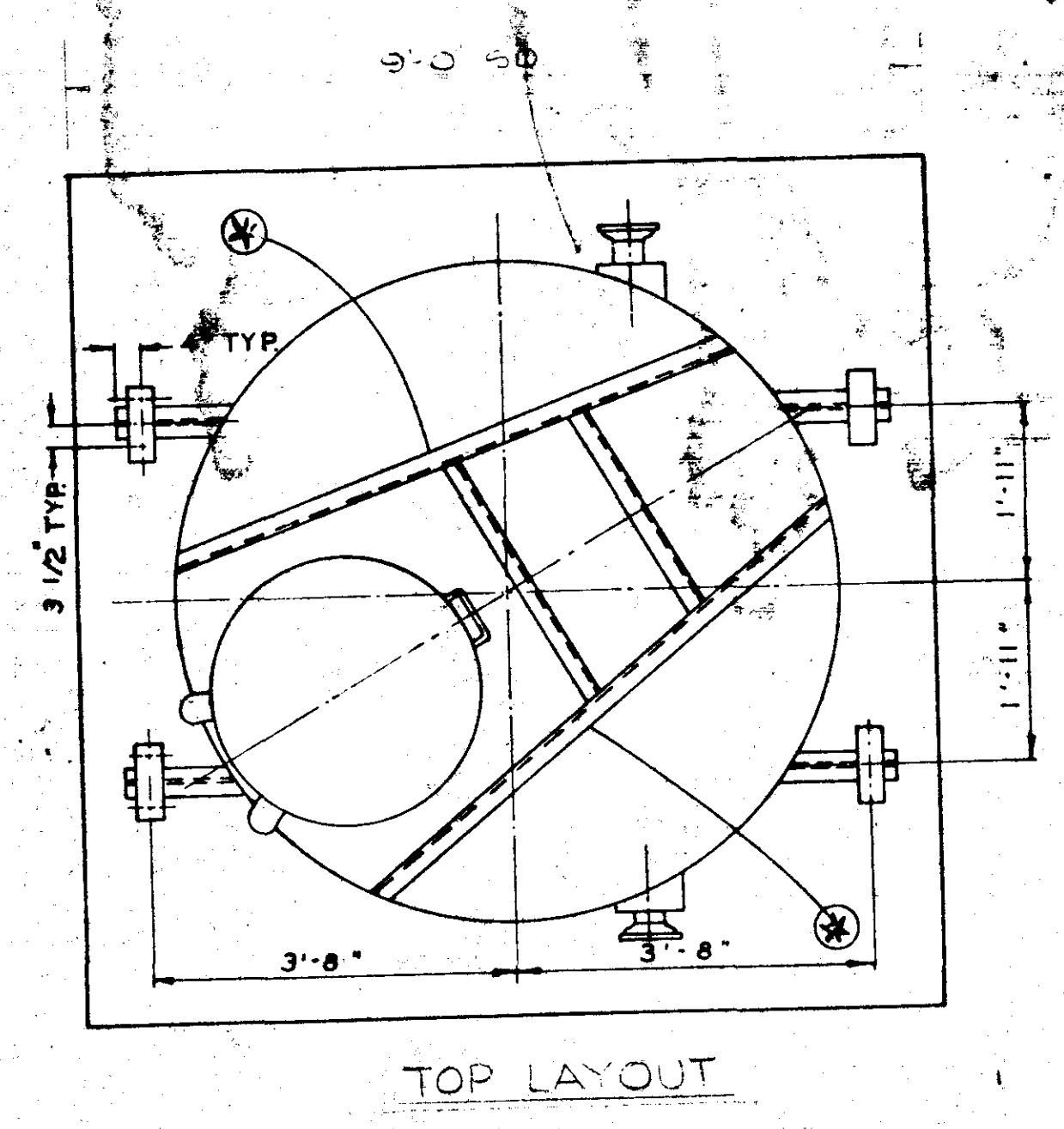


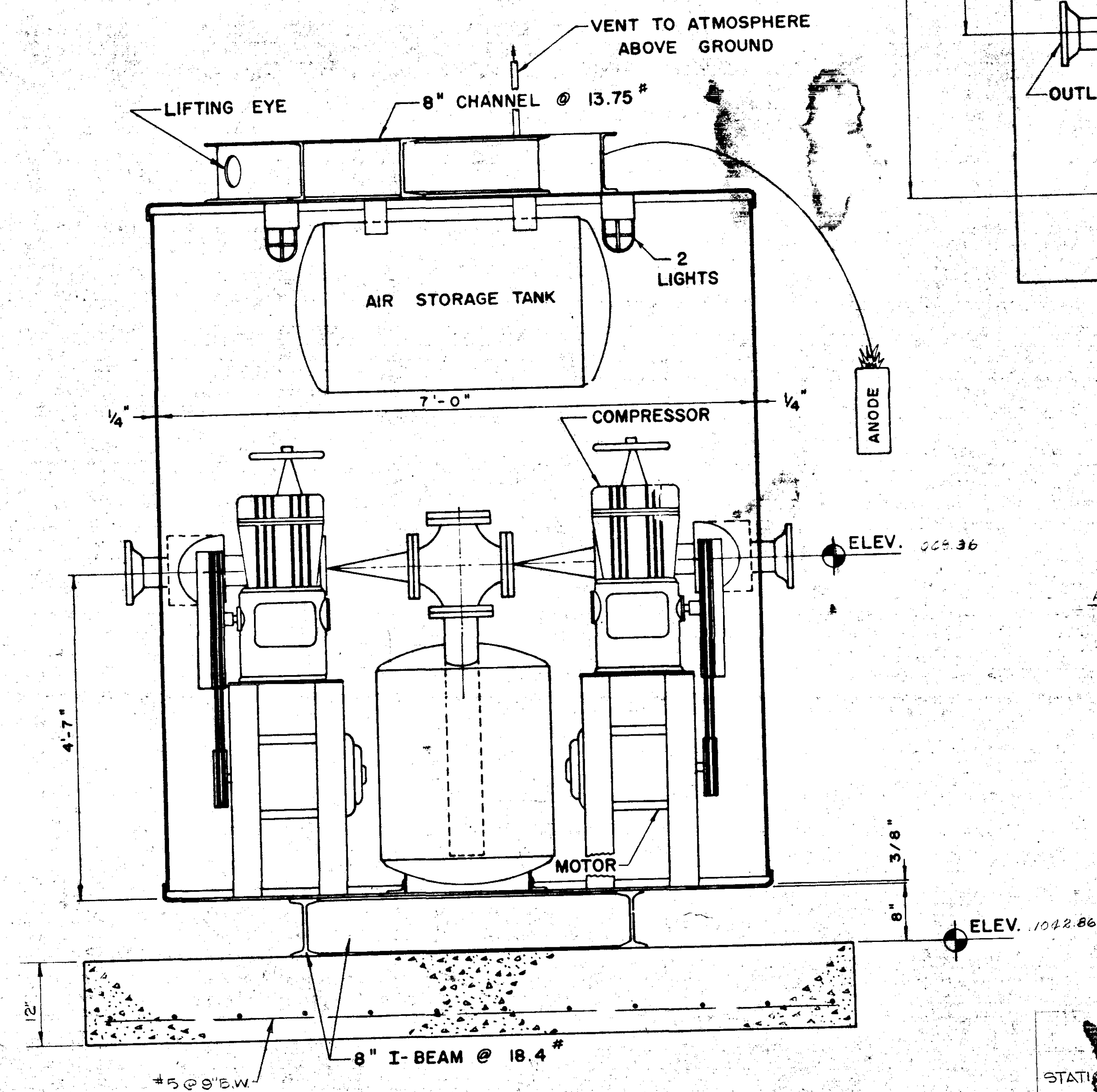
**SECTION A-A**



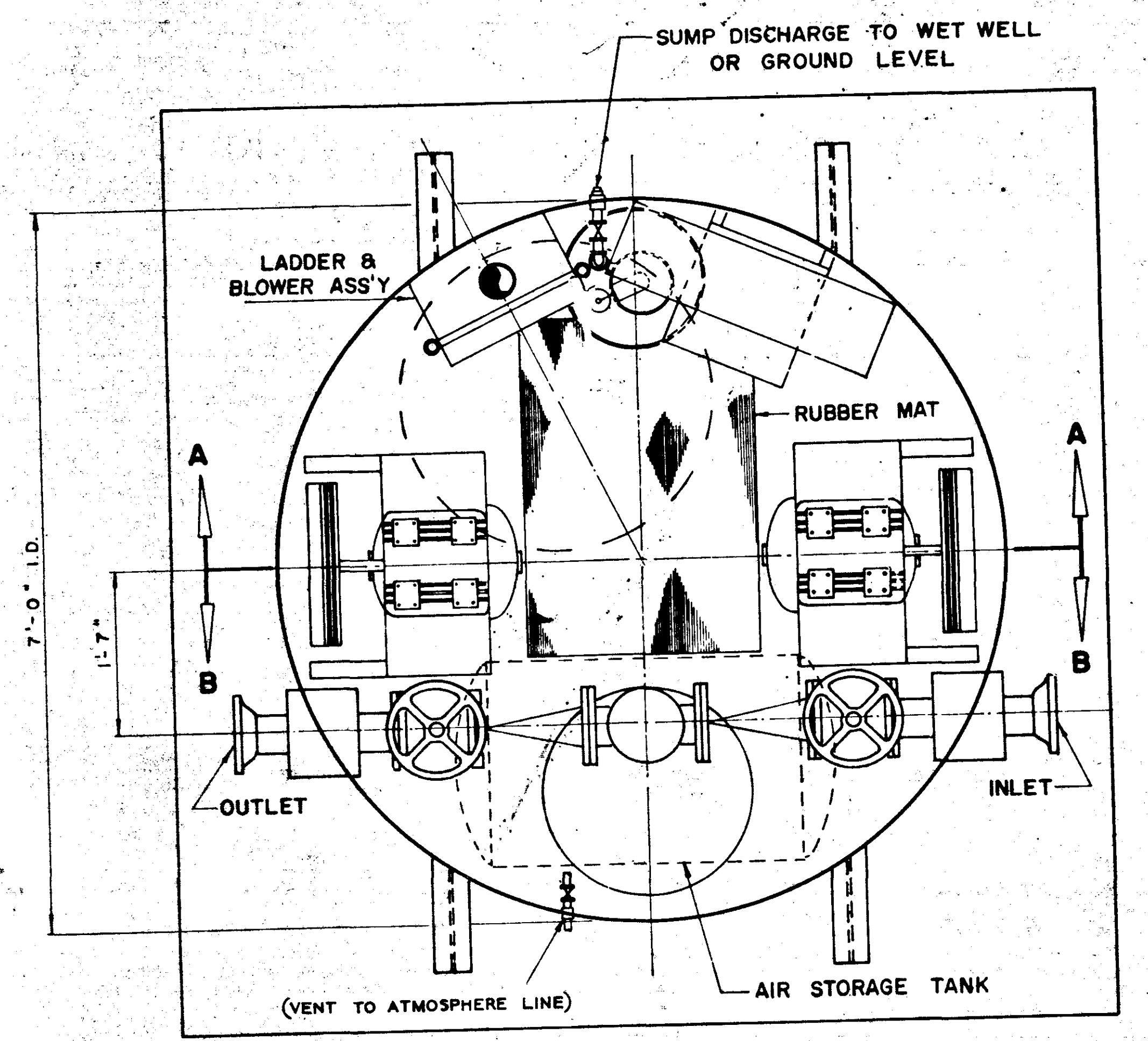
**AIR PIPING SCHEMATIC**



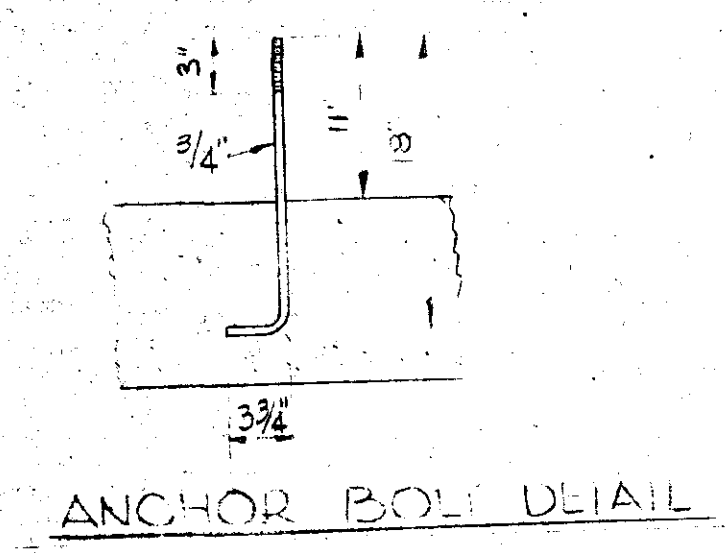
**TOP LAYOUT**



**SECTION B-B**



**PLAN**



**ANCHOR BOLT DETAIL**

- NOTES:**
1. THE SUMP PUMP DISCHARGE LINE IS FURNISHED THROUGH THE COUPLINGS IN THE SHELL BY THE LIFT STATION MFG. PIPING BEYOND COUPLINGS FURNISHED BY CONTRACTOR.
  2. SERVICE POLE AND ELECTRICAL EQUIPMENT OR FOLE CONDUIT TO COUPLING IN SHELL AND SERVICE WIRE THROUGH CONDUIT TO CONTROL PANEL SHALL BE FURNISHED BY CONTRACTOR.
  3. WELDING - ALL STRUCTURAL STEEL MEMBERS SHALL BE JOINED BY ELECTRIC ARC WELDING WITH FILLETS ADEQUATE FOR THE JOINT INVOLVED. ALL INSERTS IN THE STATION CHAMBER SHALL BE WELDED INSIDE AND OUT WHERE THE CAST IRON SUCTION AND DISCHARGE LINES PASS THROUGH THE STATION WALLS THEY SHALL BE REINFORCED WITH 1/2" THICK SLEEVES WELDED INSIDE AND OUT TO THE STATION WALLS. THE VOID BETWEEN THE CAST IRON PIPES AND THE SLEEVES SHALL BE PACKED WITH CEMENT GROUT CONTAINING EMBECCO TO PREVENT LEAKAGE.
  4. PUMP STATION OVERFLOW PIPE, PADS, ETC. ARE TO BE INCLUDED IN THE APPROPRIATE LIFT STATION SUM PRICES BID FOR PUMP STA.
  5. BACK FILL AROUND ALL PUMP STATIONS TO 90% MAX. COMPACTION.

BOOK 4 V PAGE 105

SEWERAGE EJECTOR STATION									
STATION	GPM	TDH	MOTORS	CURRENT	MAIN BREAK	PUMP BREAK	INLET	OUTLET	
			HP-RPM-TYPE	PHASE-CYCLE-VOLT	AMP	AMP	DIA.	DIA.	
	60		5-3-3000	3-60-220	100	30	4"	4"	

**PRINTED**  
DEC 1 1970

OWNER  
**DAVIS AND FLOYD ENGINEERS, INC.**  
CONSULTING ENGINEERS  
GREENWOOD, S. C. ATLANTA, GA.

OWNER  
**TOWN OF TRAVELERS REST, S.C.**

TITLE  
**EJECTOR STATIONS**

DESIGNED: \_\_\_\_\_  
DRAWN: \_\_\_\_\_  
CHECKED: P.R.F.  
APPROVED: P.R.F.  
DATE: \_\_\_\_\_

SCALE: AS SHOWN  
DATE: MAY 1970  
CONTRACT NO. 294  
SH. OF CH-3