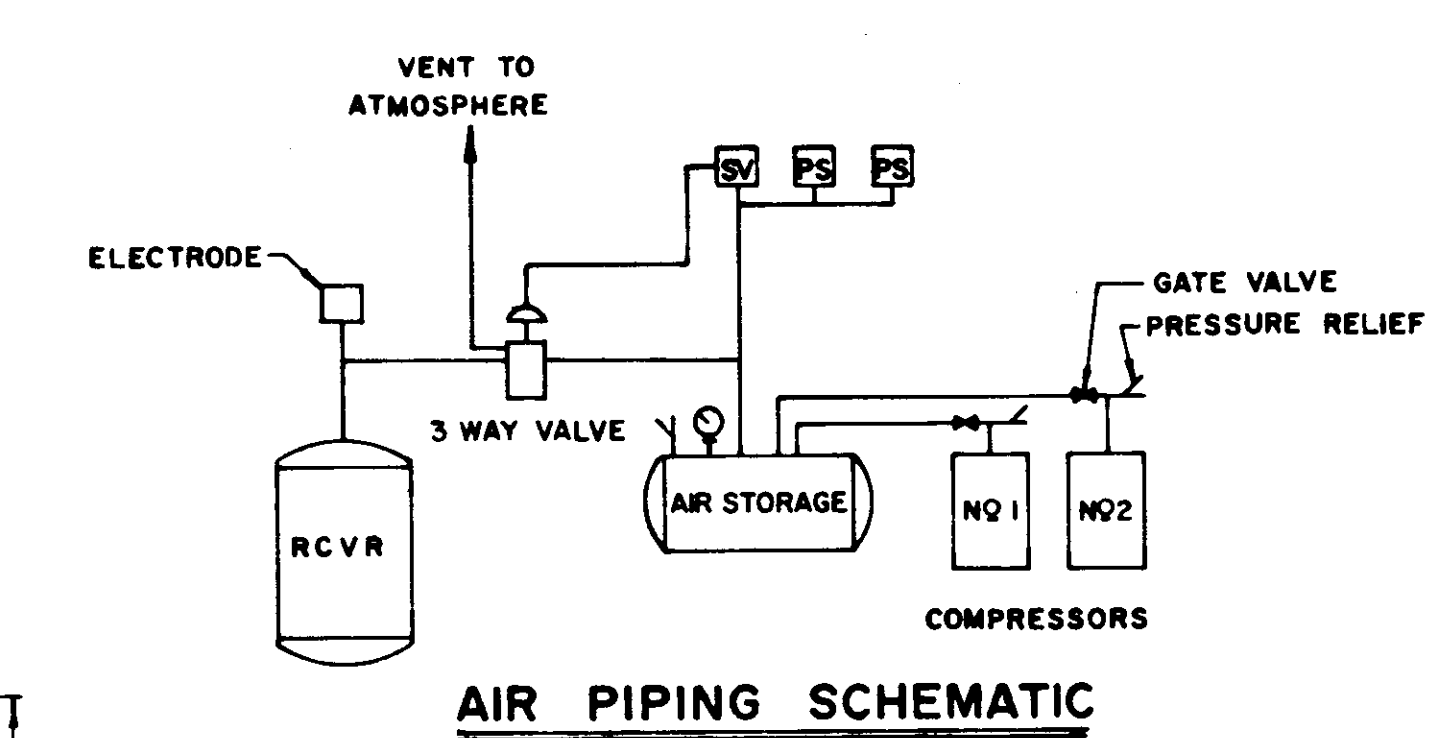
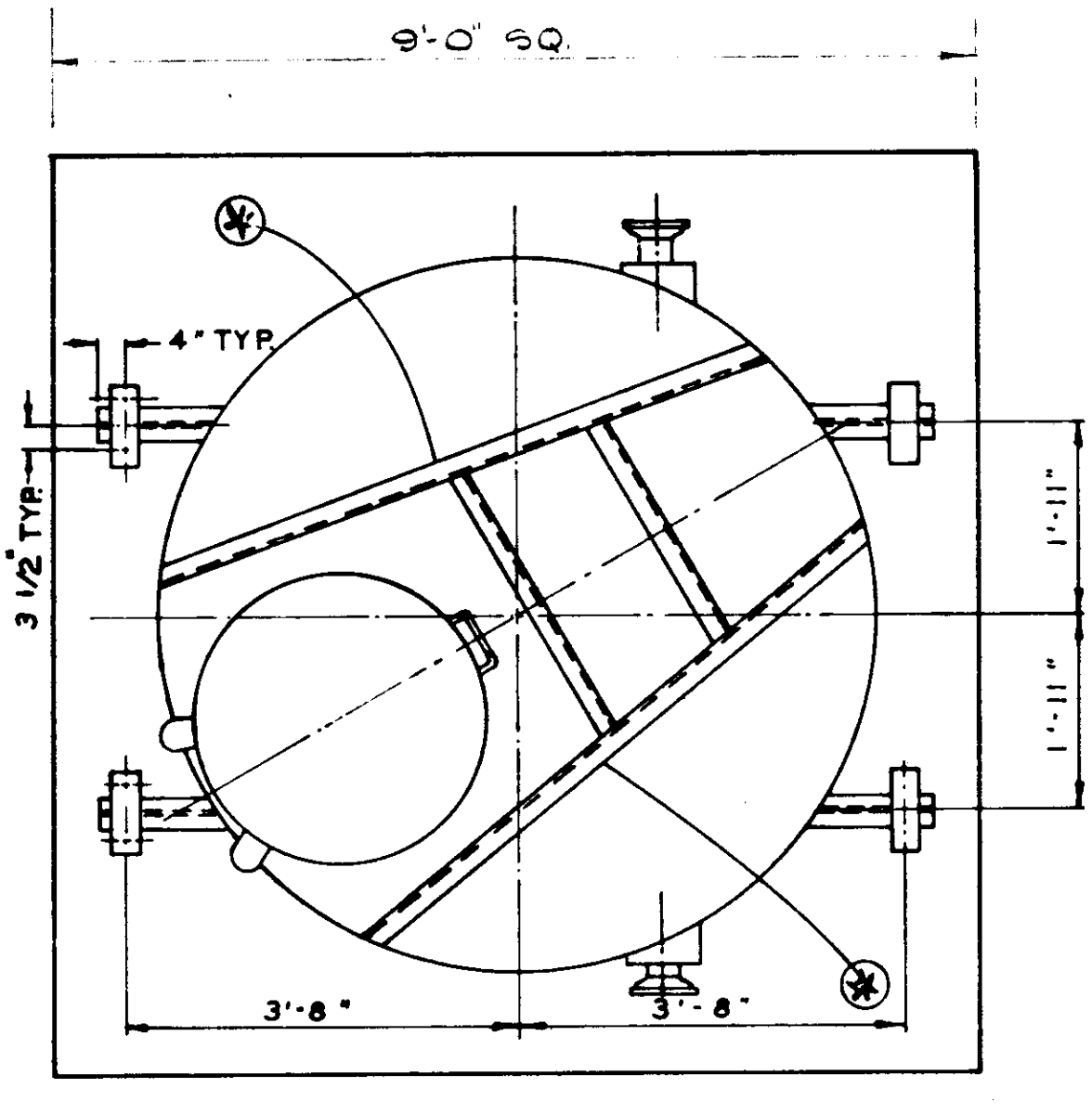


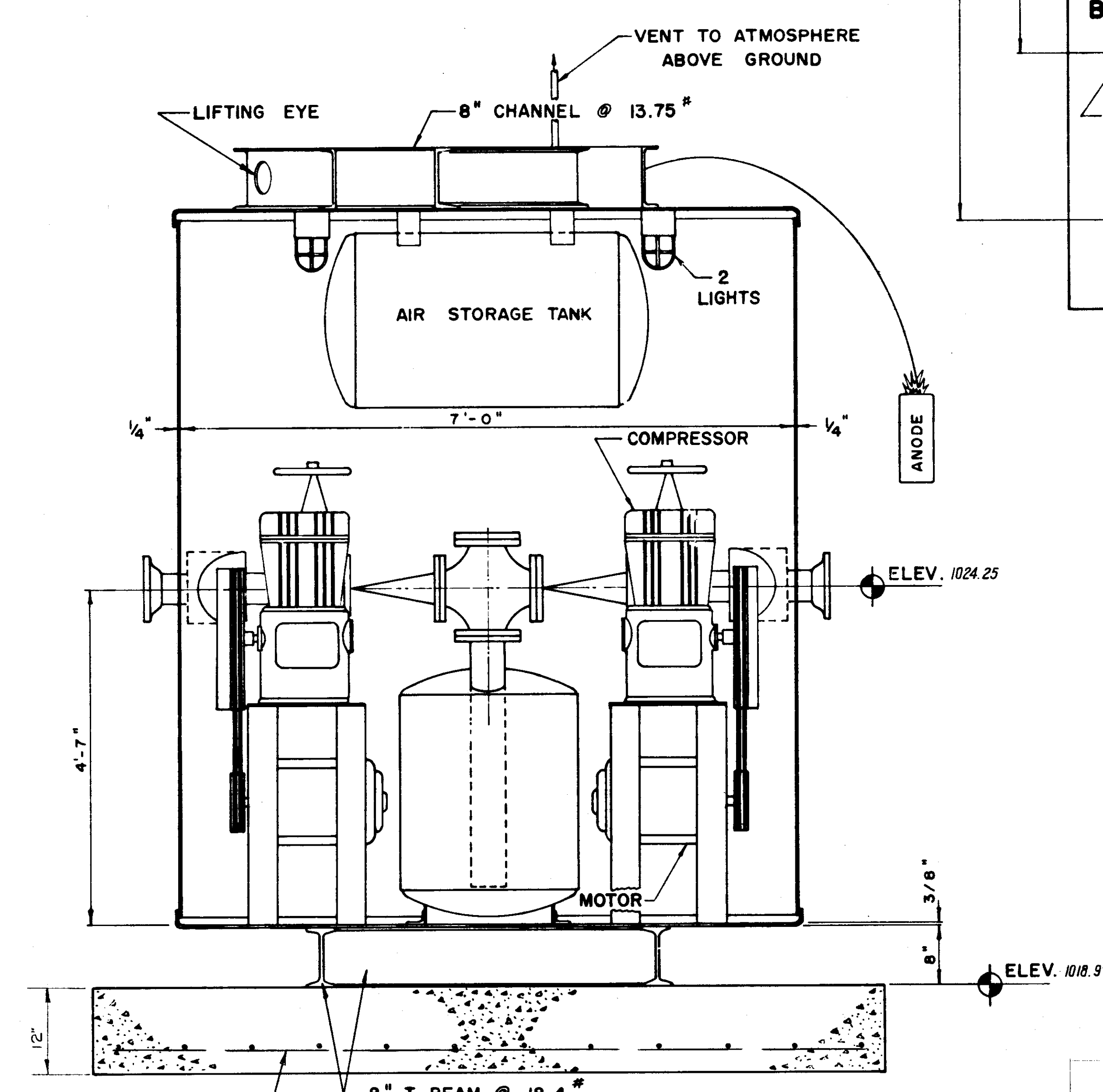
SECTION A-A



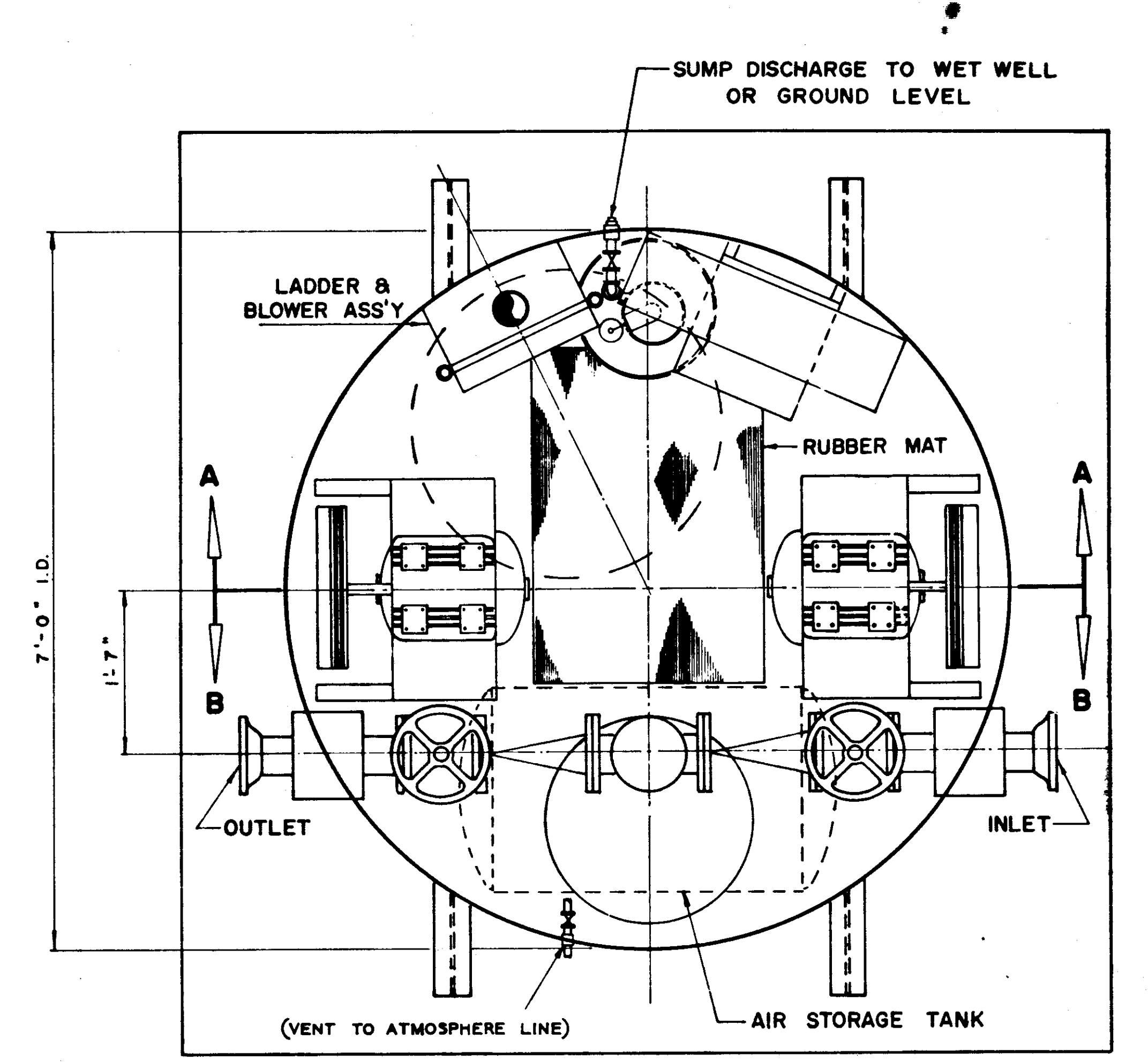
AIR PIPING SCHEMATIC



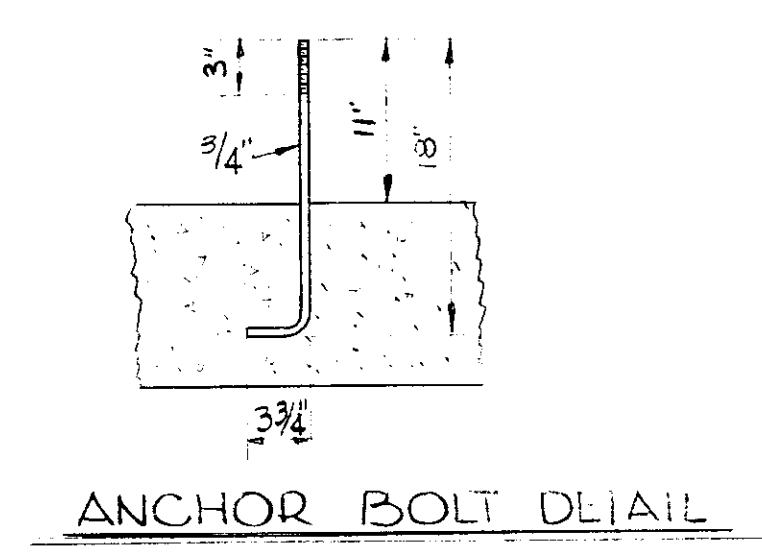
TOP LAYOUT



SECTION B-B



PLAN



ANCHOR BOLT DETAIL

- NOTES:
1. THE SUMP PUMP DISCHARGE LINE IS FURNISHED THROUGH THE COUPLINGS IN THE SHELL BY THE LIFT STATION MFG. PIPING BEYOND COUPLINGS FURNISHED BY CONTRACTOR.
  2. SERVICE POLE AND ELECTRICAL EQUIPMENT ON POLE CONDUIT TO COUPLING IN SHELL AND SERVICE WIRES THROUGH CONDUIT TO CONTROL PANEL SHALL BE FURNISHED BY CONTRACTOR.
  3. WELDING - ALL STRUCTURAL STEEL MEMBERS SHALL BE JOINED BY ELECTRIC ARC WELDING WITH FILLERS ADEQUATE FOR THE JOINT INVOLVED. ALL INSERTS IN THE STATION CHAMBER SHALL BE WELDED INSIDE AND OUT WHERE THE CAST IRON SUCTION AND DISCHARGE LINES PASS THROUGH THE STATION WALLS THEY SHALL BE REINFORCED WITH 1/2" THICK SLEEVES WELDED INSIDE AND OUT TO THE STATION WALLS THE VOID BETWEEN THE CAST IRON PIPES AND THE STEEL SLEEVES SHALL BE PACKED WITH CEMENT GROUT CONTAINING EMBECCO TO PREVENT LEAKAGE.
  4. PUMP STATION OVERFLOW PIPE, PADS, ETC. ARE TO BE INCLUDED IN THE APPROPRIATE LUMP SUM PRICES BID FOR PUMP STATION.
  5. BACK FILL AROUND ALL PUMP STATIONS TO 90% MAX COMPACTION.

BOOK 4 V PAGE 78

SEWERAGE EJECTOR STATION									
STATION MFG. BY DAVIS OR APPROVED EQUAL									
STATION	GPM	TDH	MOTORS	CURRENT	MAIN BREAK	PUMP BREAK	INLET	OUTLET	
			HP - RPM - TYPE	PHASE - CYCLE - VOLT.	AMP	AMP	DIA.	DIA.	
	60	72	5-1750-300P	3-60-220	100	30	4"	4"	

PRINTED  
DEC 1 1968

DAVIS AND FLOYD ENGINEERS, INC. CONSULTING ENGINEERS GREENWOOD, S. C.      ATLANTA, GA.	OWNER	TOWN OF TRAVELERS REST, S.C.	TITLE	EJECTOR STATIONS	DESIGNED:		SCALE:	AS SHOWN	CONTRACT NO.	284	
					DRAWN:		DATE:	JULY 1968	SH.	19	
					CHECKED:	P. R. F.				OF	43
					APPROVED:	P. R. F.	DATE	REVISIONS	BY		