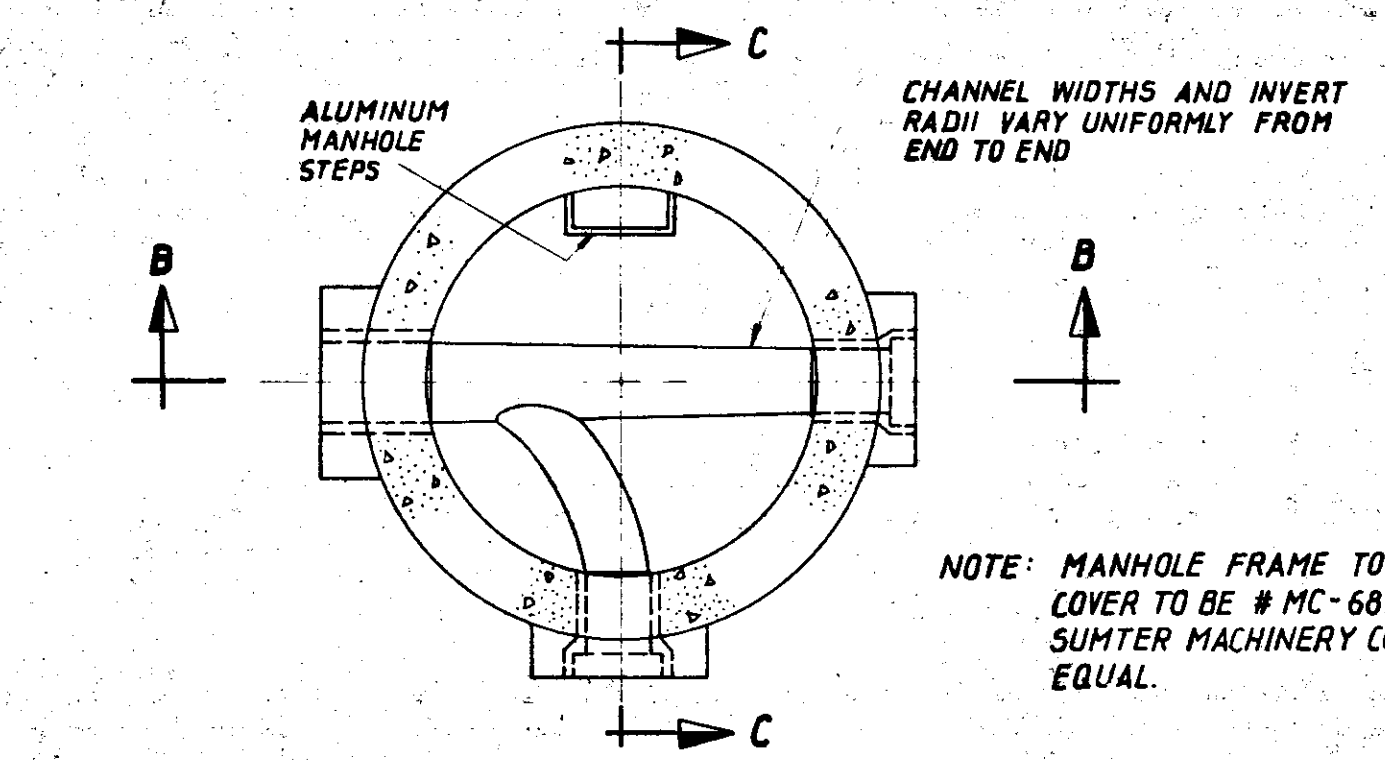


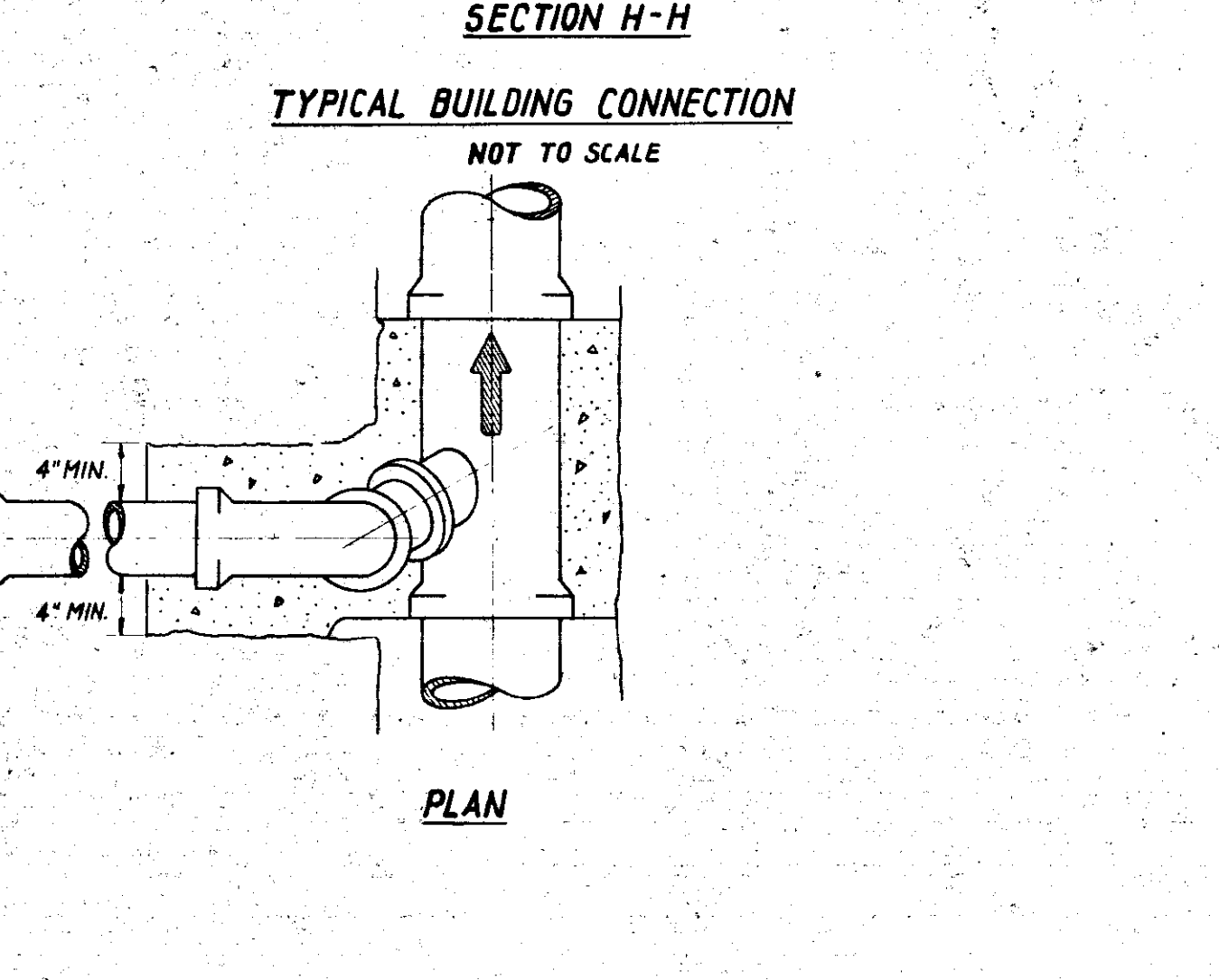
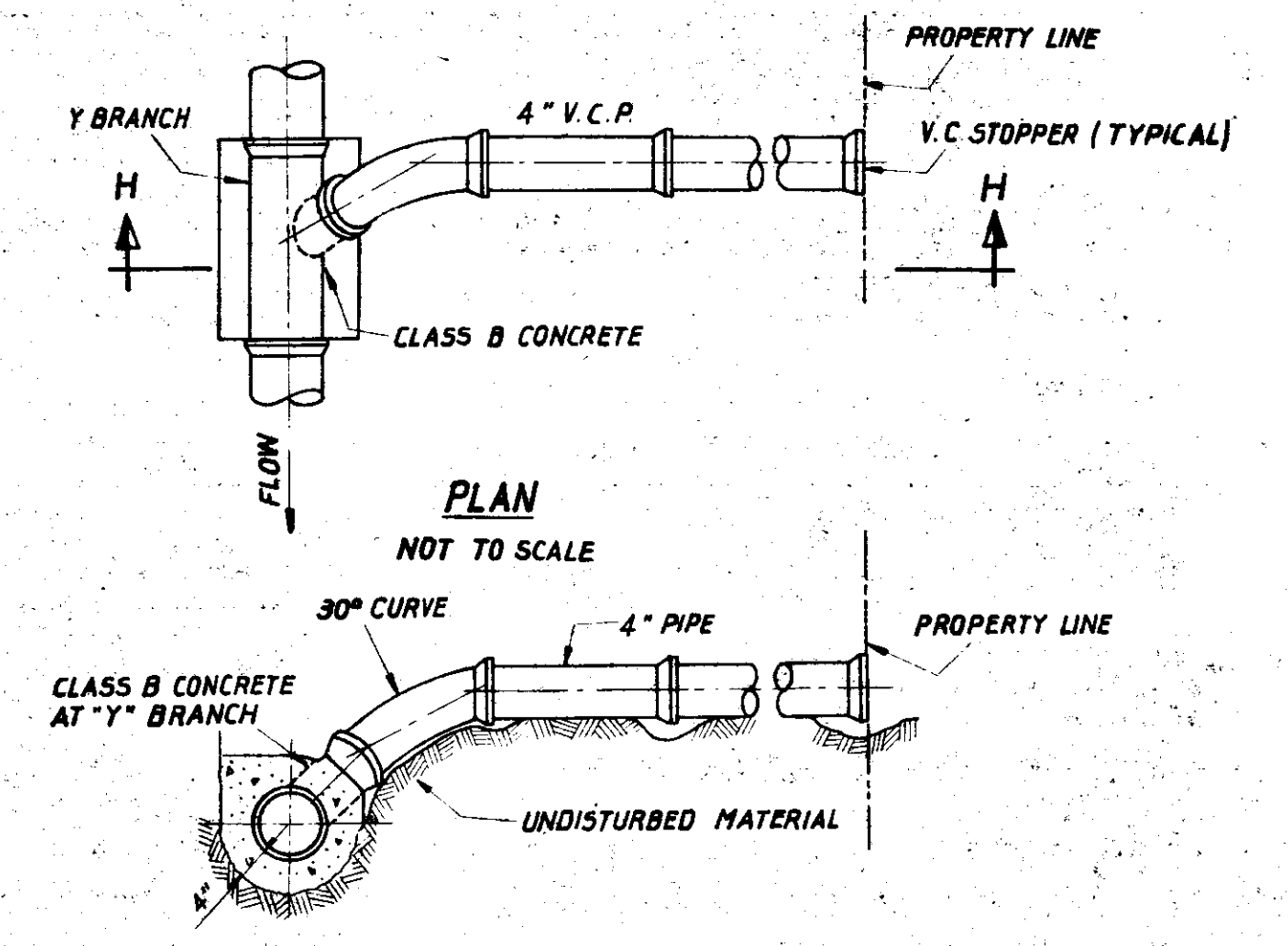
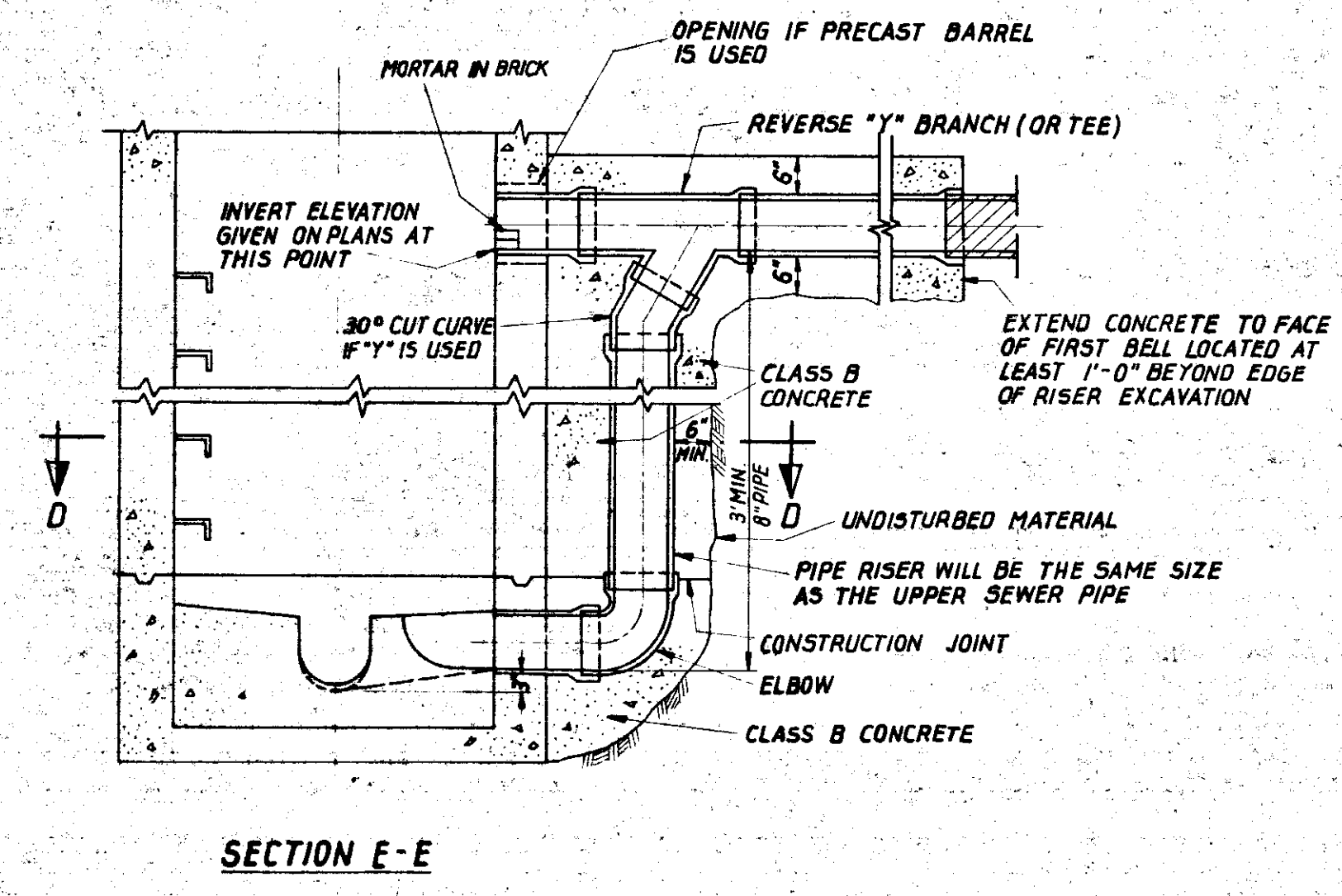
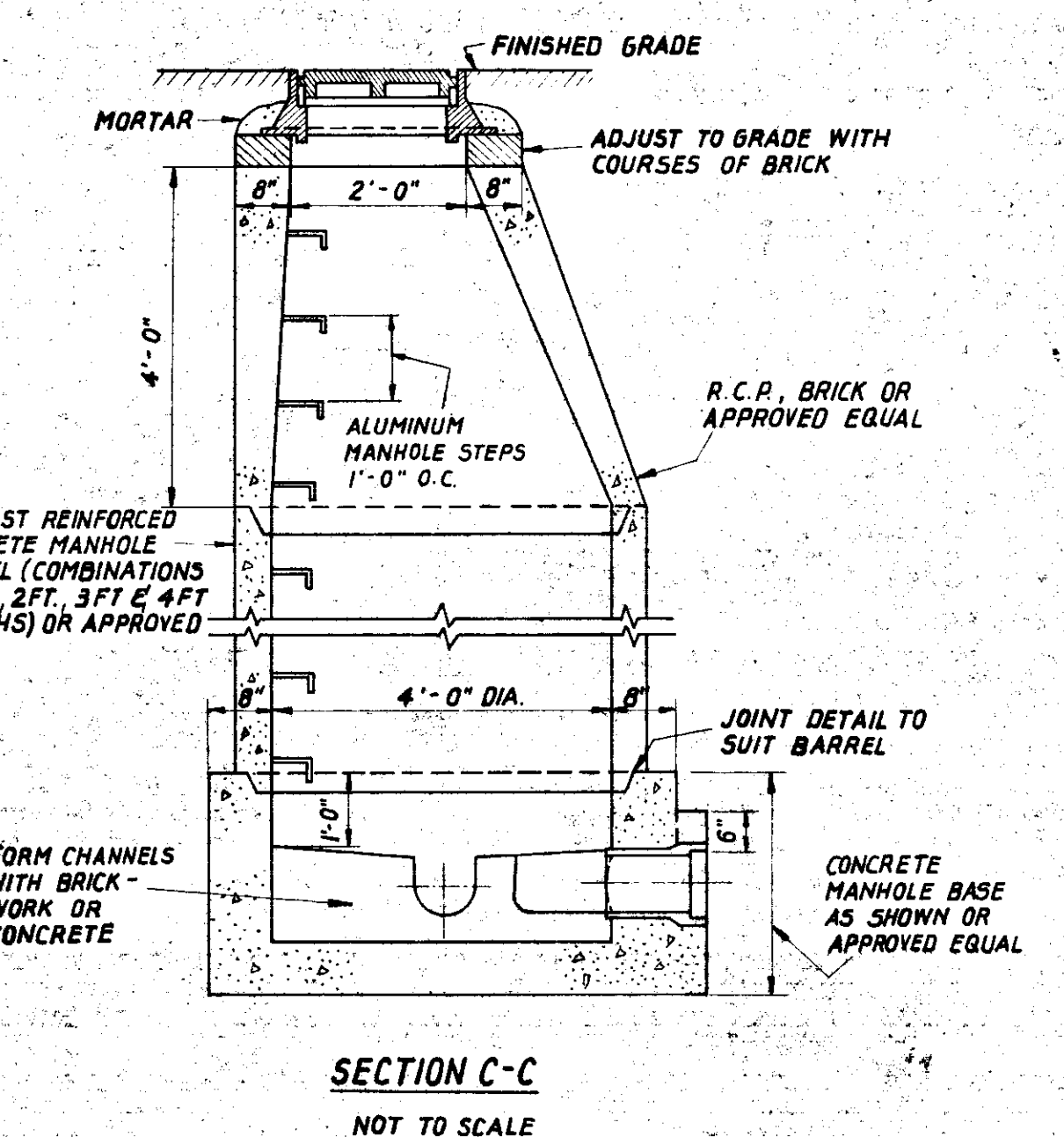
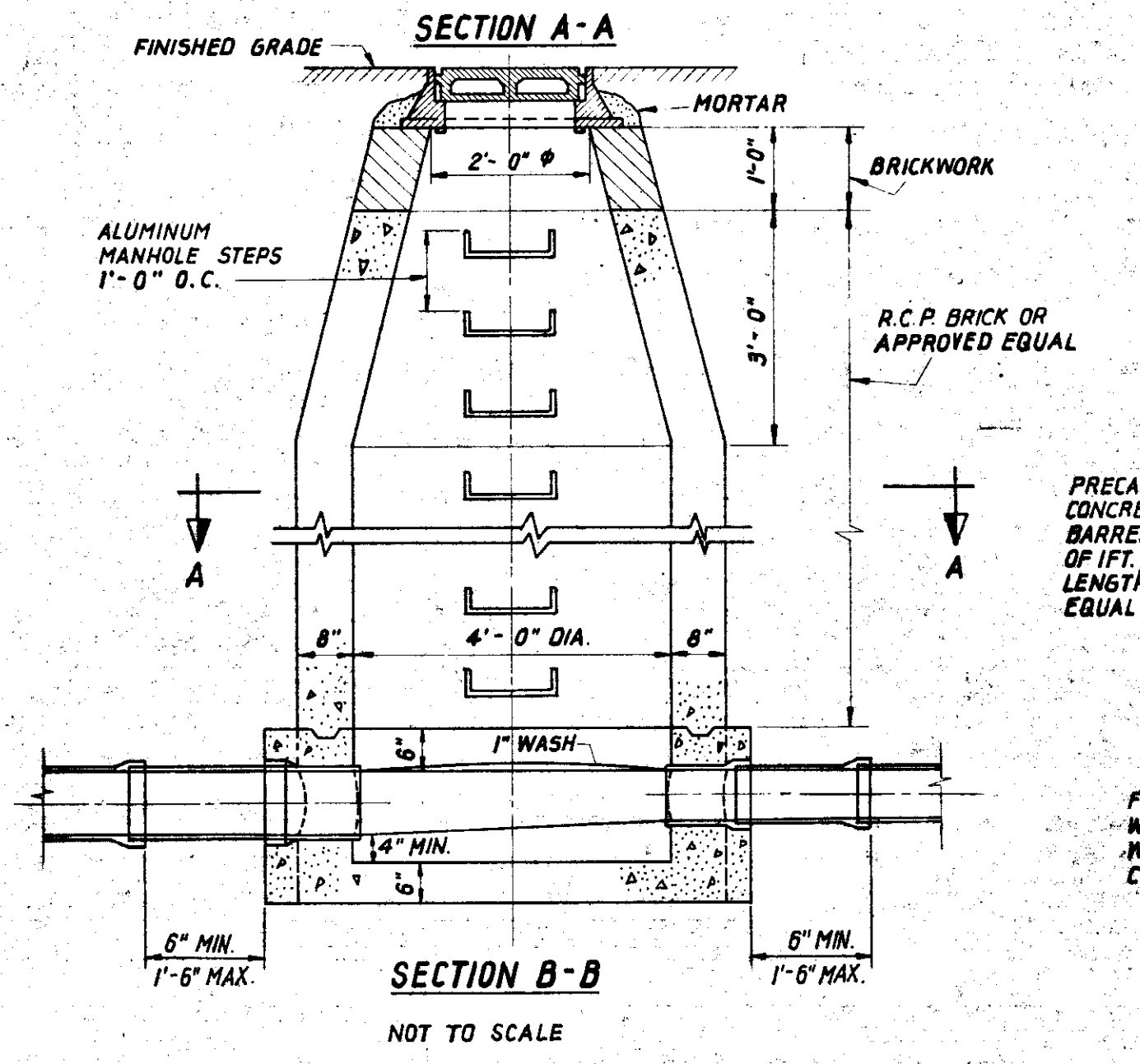
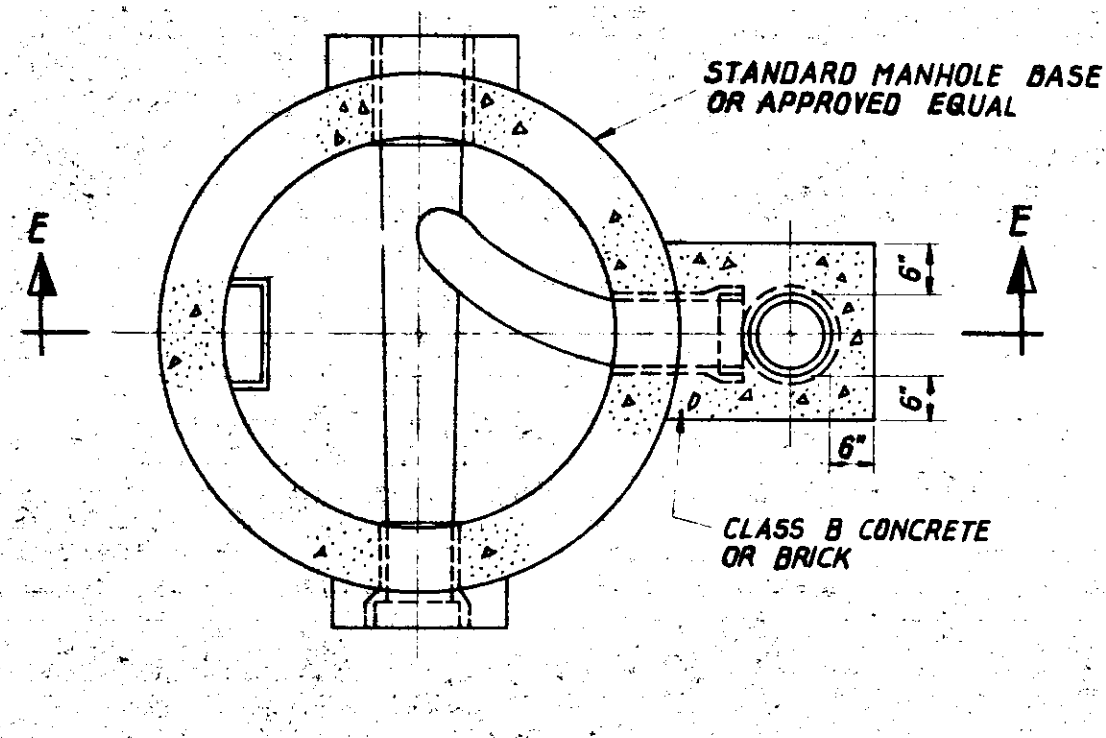
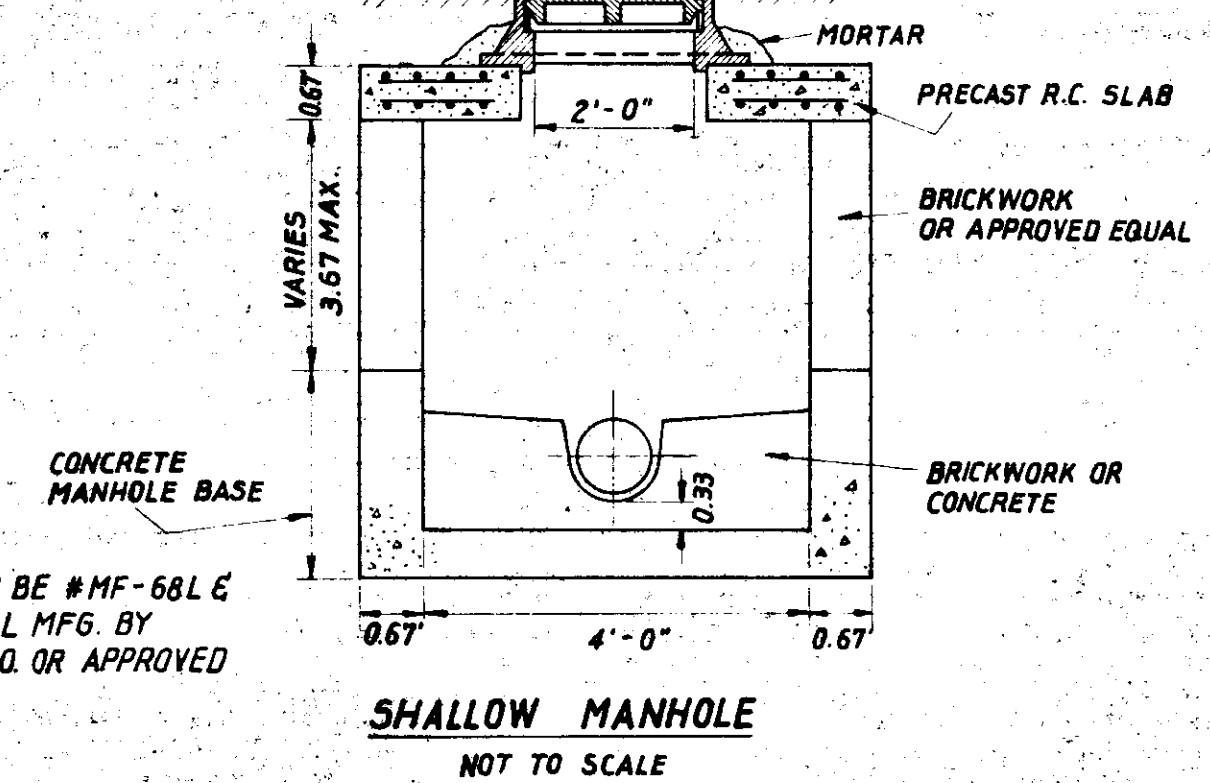
ALL CHANGES OF DIRECTION WILL BE MADE WITHIN MANHOLES BY MEANS OF CURVED CHANNELS HAVING MAXIMUM PRACTICABLE RADI

NOTE: ALL BRICKWORK TO HAVE 1/4" TO 3/8" CEMENT PLASTER ON OUTSIDE, COATED WITH BITUMINOUS WATER PROOFING. SEE SPECIFICATIONS



NOTE: MANHOLE FRAME TO BE #MF-68L & COVER TO BE #MC-68L MFG. BY SUMTER MACHINERY CO. OR APPROVED EQUAL.

CHANNEL WIDTHS AND INVERT RADI VARY UNIFORMLY FROM END TO END



NOTE: WITHIN ROAD RIGHT-OF-WAY AND AT LOCATIONS DESIGNATED BY THE ENGINEER, OR AS SPECIFIED, A SUITABLE BACKFILL MATERIAL (COMPACTED TO 90% MAXIMUM) WILL BE PLACED THROUGHOUT ENTIRE PIPE TRENCH.

PLACE 1" x 2" TREATED WOOD LOCATION MARKERS AT THE ENDS OF ALL SERVICE LINES OR AT WYES AND TAPS SHOULD NO SERVICE LINES BE INSTALLED

NOTE: CONCRETE ENCASEMENT OF SEWER LINES WILL BE PLACED AS SPECIFIED OR AS DIRECTED BY THE ENGINEER

