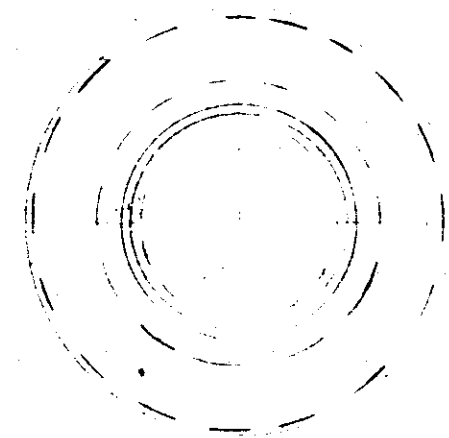


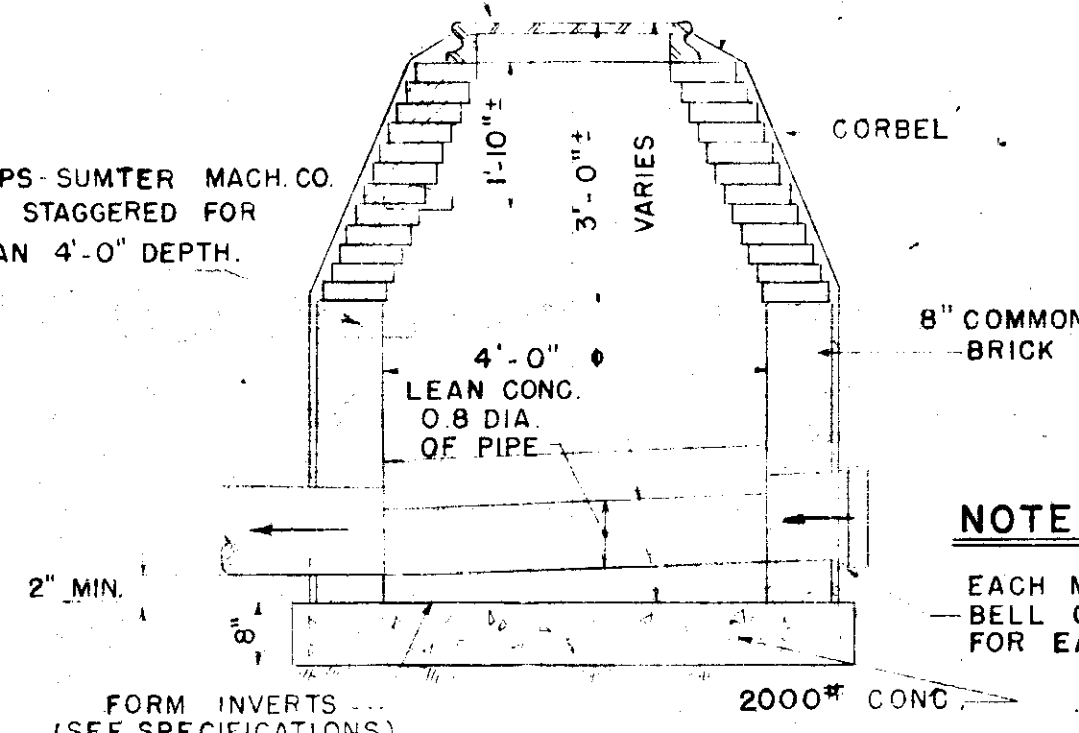
SUMTER MACH. CO.
C.I. RING & COVER
FRAME NO. MF11
COVER NO. MG14
OR APPROVED
EQUAL.



PLAN
2'-0"

PLASTER EXTERIOR
WITH 3/4" THICK
CEMENT MORTAR,
1:2 MIX.

G.I. MANHOLE STEPS-SUMTER MACH. CO.
STEP NO. 1 15" O.C. STAGGERED FOR
MHS GREATER THAN 4'-0" DEPTH.



SECTION

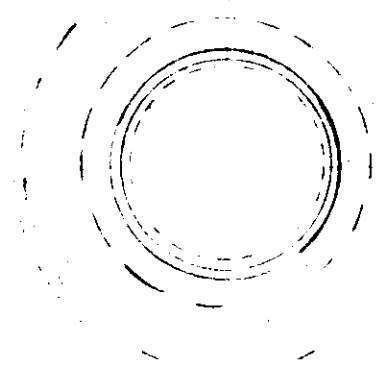
TYPICAL MANHOLE
1/2" = 1'-0"

NOTE:

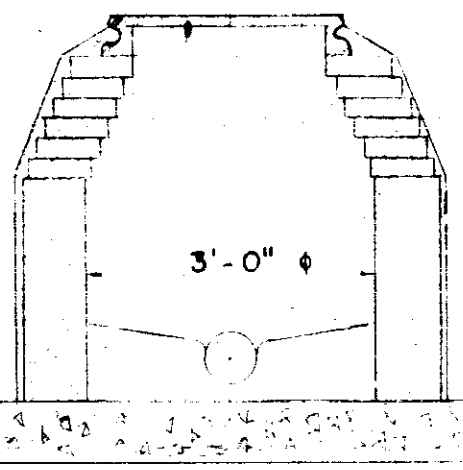
EACH MANHOLE TO HAVE
BELL CONNECTION AS SHOWN
FOR EACH INLET

NOTE:

1. OMITTED DETAIL
SAME AS SHOWN
FOR TYPICAL
MANHOLE.

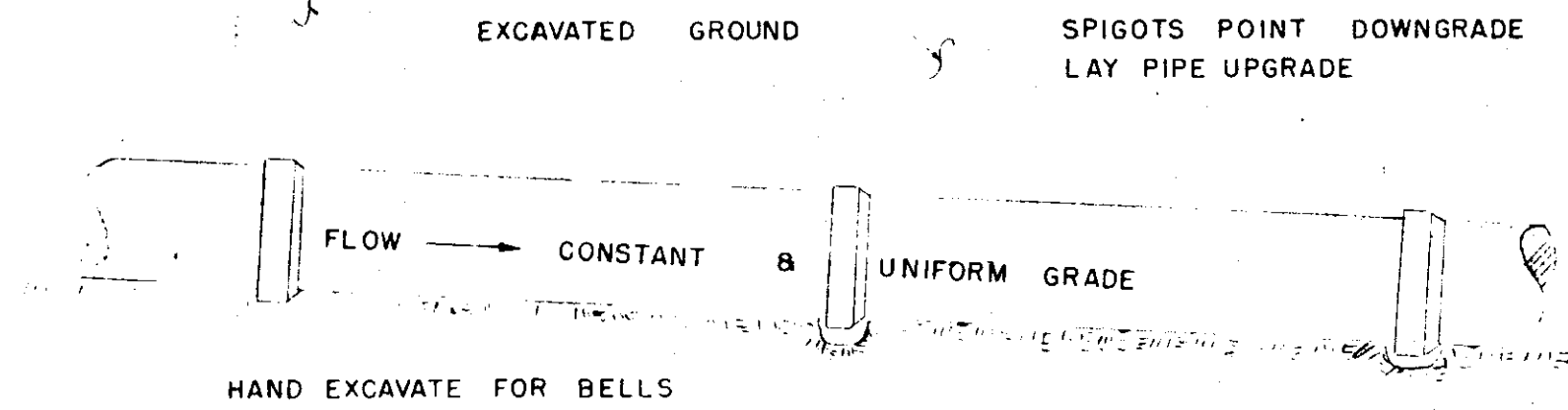


PLAN

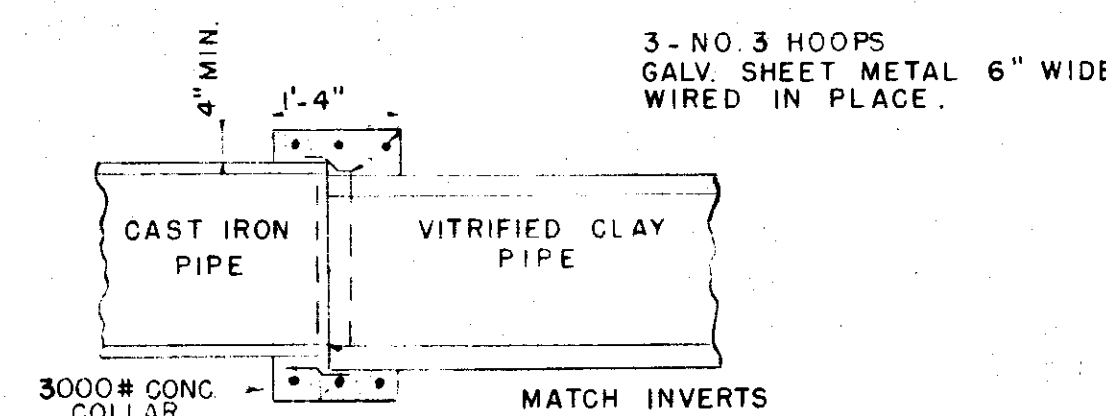


SECTION

SHALLOW MANHOLE
1/2" = 1'-0"



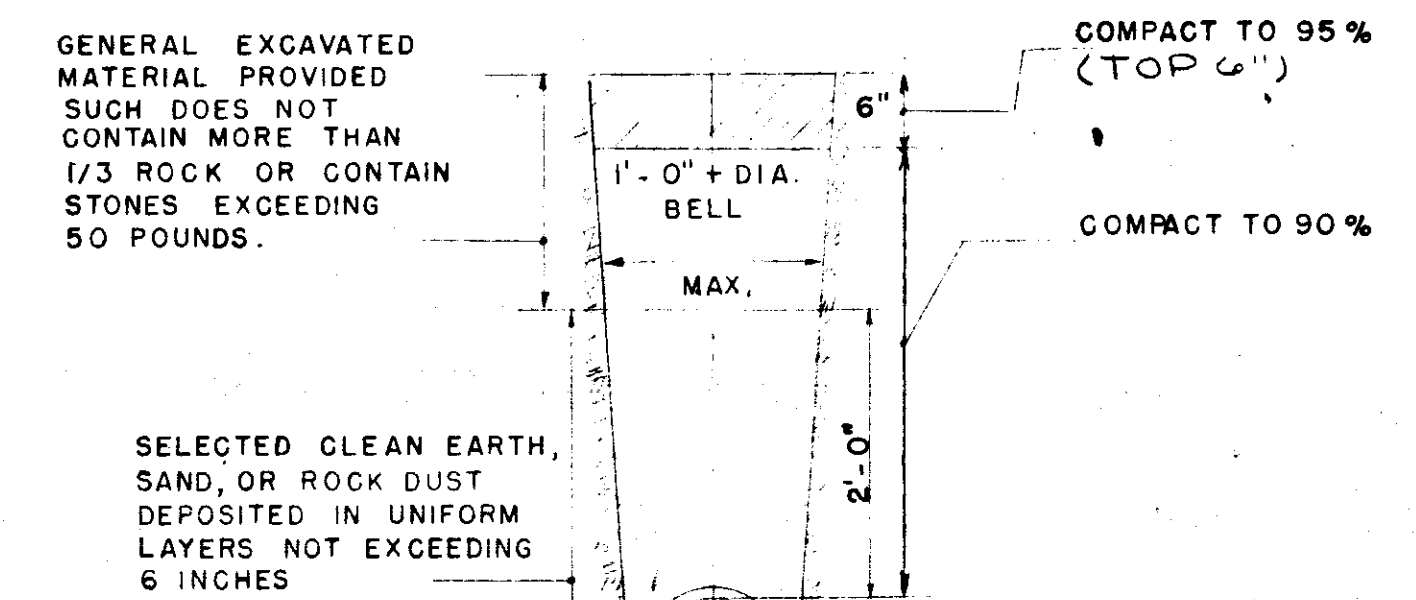
LONGITUDINAL SECTION
TRENCH
3/4" = 1'-0"



SECTION

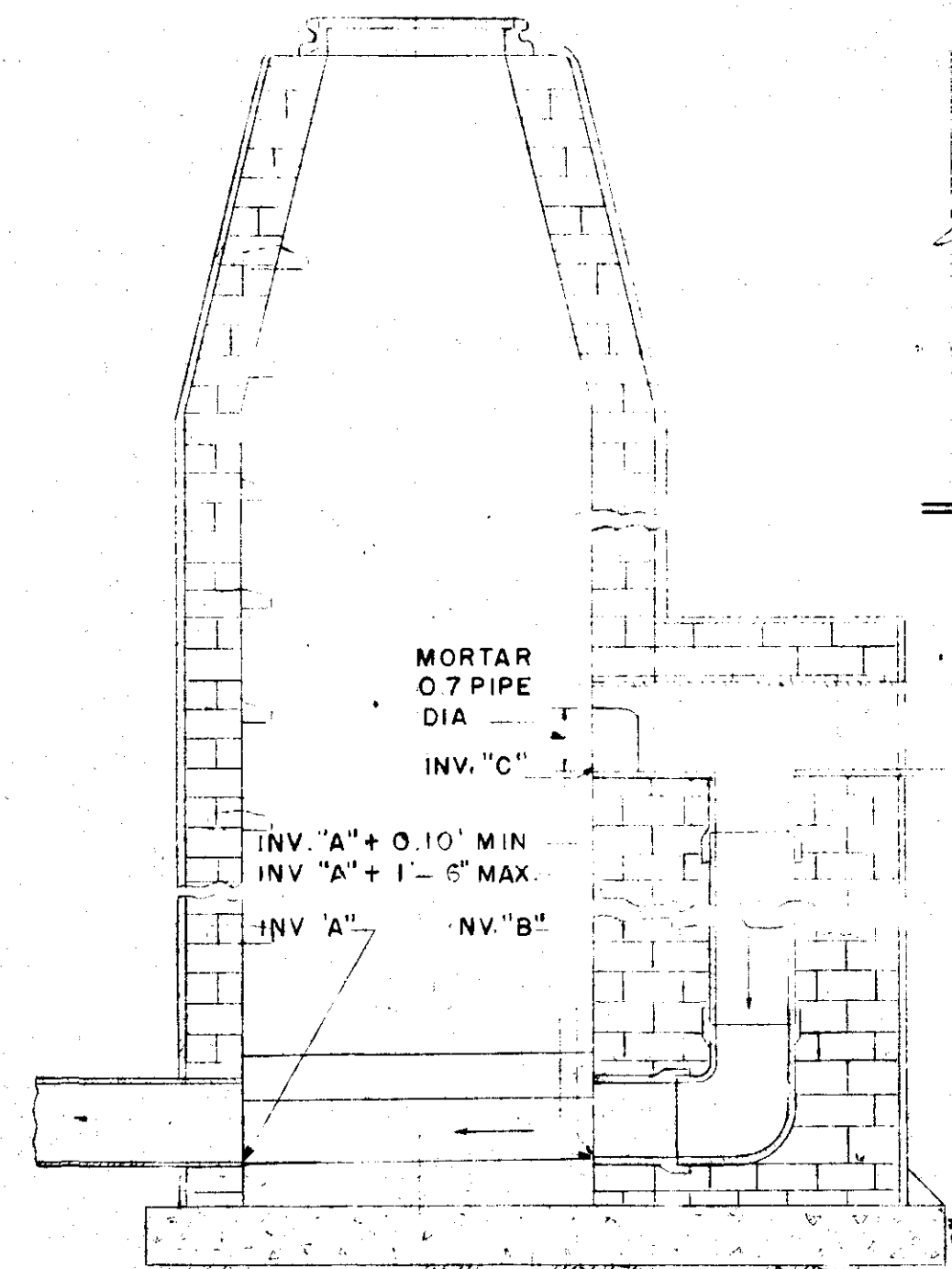
CONCRETE COLLAR
NO SCALE

NOTE:
1. WET OR UNSTABLE BOTTOMS EXCAVATE MIN. 4" BELOW BELL.
BACKFILL WITH WASHED CRUSHED STONE, TYPE I BEDDING
2. ROCK BOTTOMS, EXCAVATE MIN. 4" BELOW BELL, BACKFILL
WITH EARTH, OR SAND AS INDICATED FOR TYPE II BEDDING



TRANSVERSE SECTION

TRENCH
3/4" = 1'-0"



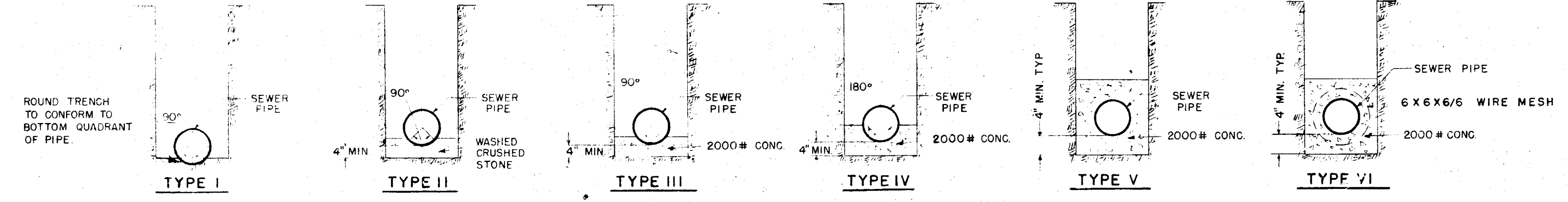
SECTION

TYPICAL DROP MANHOLE
1/2" = 1'-0"

PLAN
DROP CONNECTION
1/2" = 1'-0"

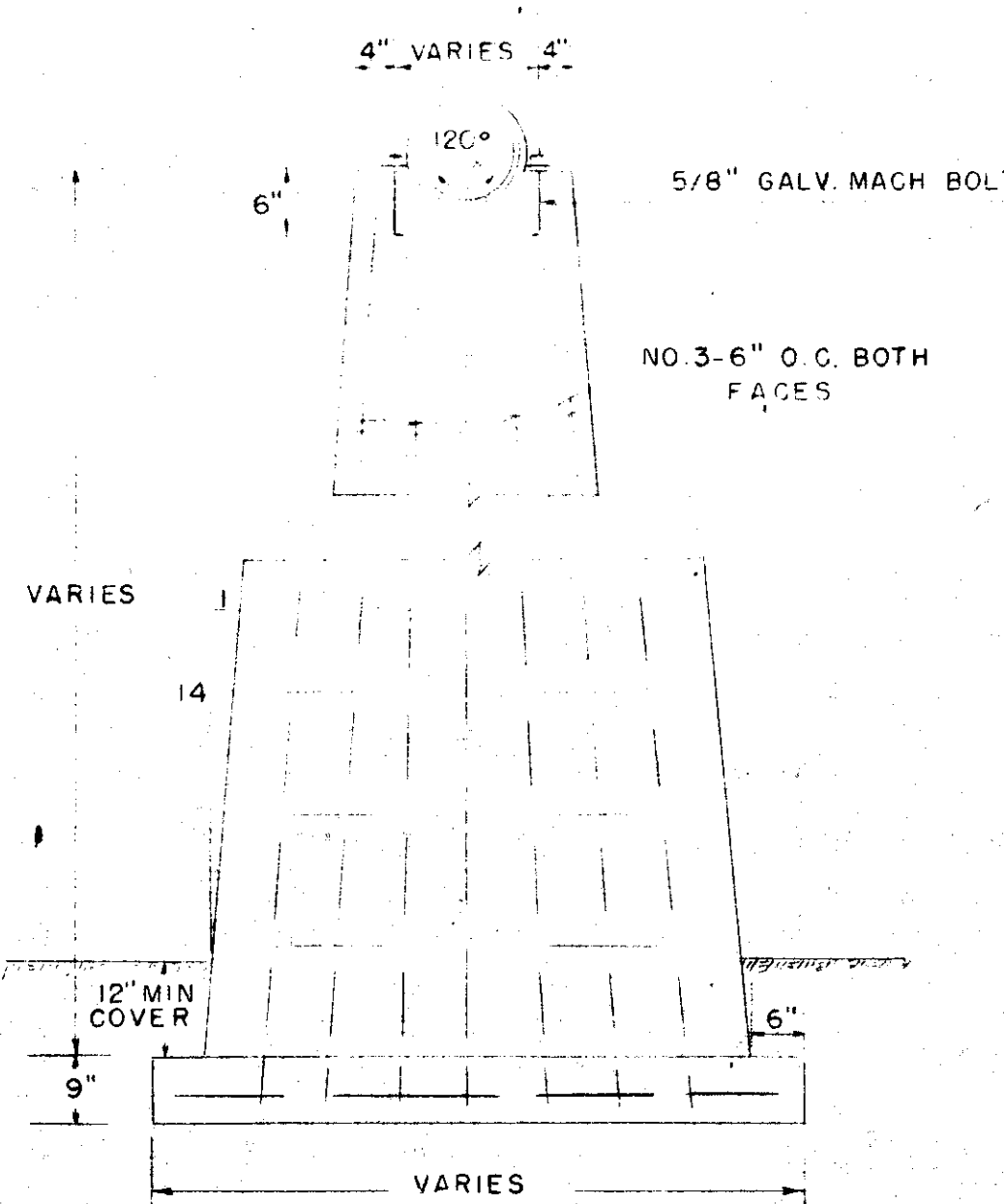
NOTE:

1. OMITTED DETAIL
SAME AS SHOWN FOR
TYPICAL MANHOLE
2. USE DROP MANHOLE WHEN
INCOMING & OUTGOING INVERTS
EXCEED 1' 6" IN ELEVATION.
3. INV. "B" NOT INDICATED ON
PLAN & PROFILE.

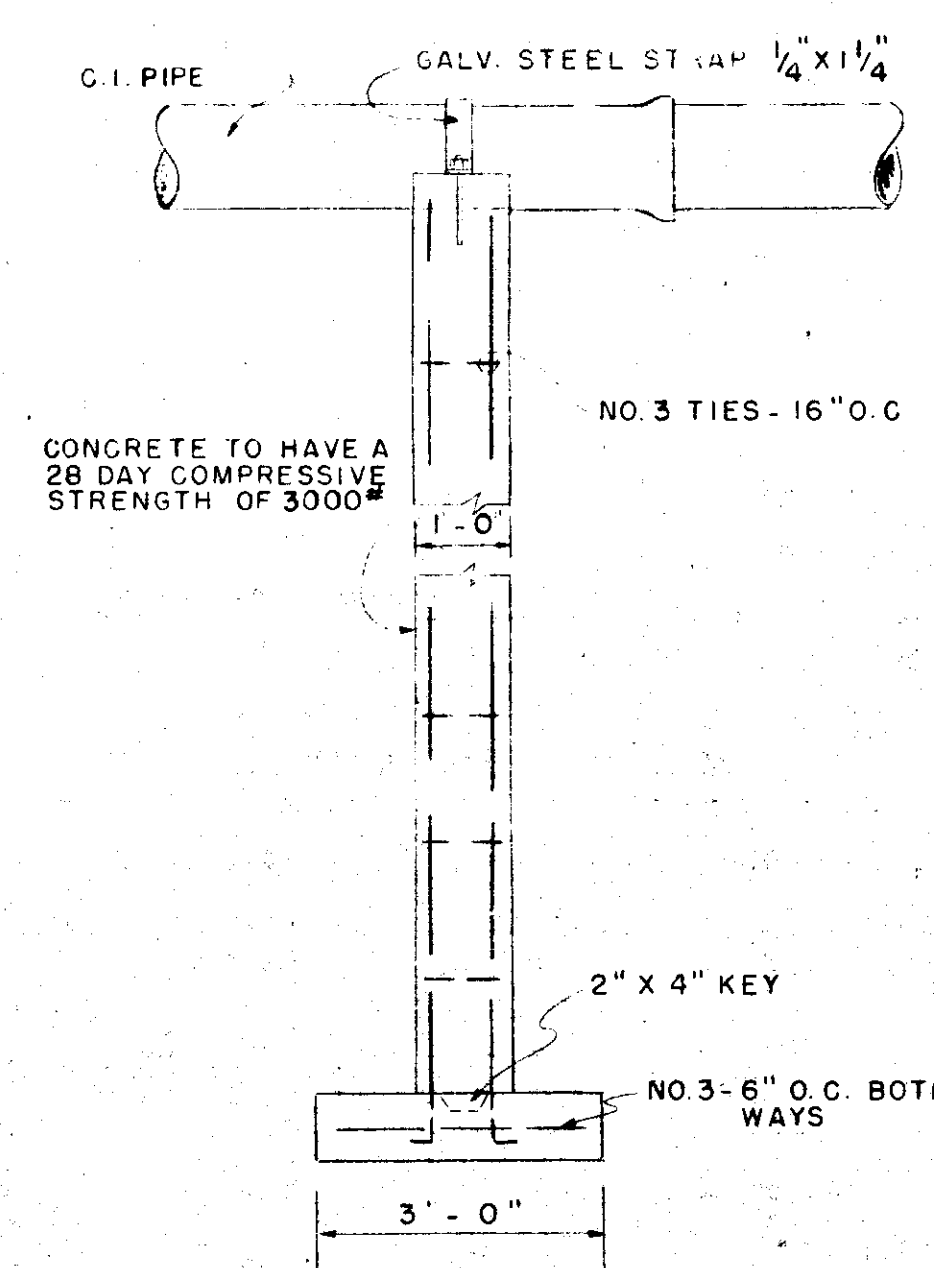


PIPE BEDDING & ENCASEMENT DETAILS

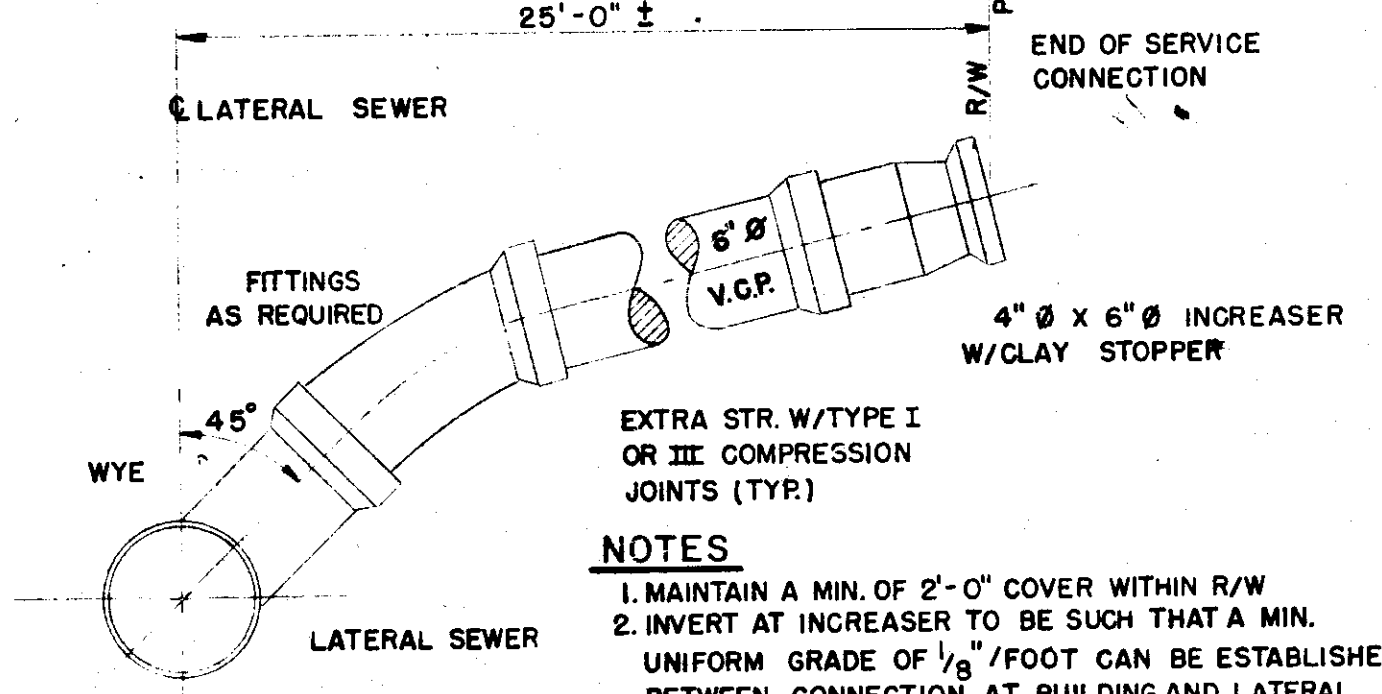
NO SCALE



PIER DETAILS
NO SCALE



TYPICAL SERVICE CONNECTION DETAIL
NO SCALE



NOTES:

1. MAINTAIN A MIN. OF 2'-0" COVER WITHIN R/W
2. INVERT AT INCREASER TO BE SUCH THAT A MIN.
UNIFORM GRADE OF 1/8" / FOOT CAN BE ESTABLISHED
BETWEEN CONNECTION AT BUILDING AND LATERAL
SEWER. ALL GRADES TO BE TRUE AND UNIFORM.
3. CONTRACTOR TO INSTALL FITTINGS AT LATERAL SEWER
AS REQUIRED TO INSURE TRUE AND UNIFORM GRADE
TO BUILDING CONNECTION.
4. A 2" X 4" X 1'-0" CREOSOTED MARKER TO BE PLACED AT
THE END OF EACH SERVICE CONNECTION

PROJ. NO. PFL-SC-70

	TOWN OF SIMPSONVILLE GREENVILLE COUNTY, S.C. INTERCEPTOR & LATERAL SYSTEM		SHEET NO. 3
	TYPICAL DETAILS PIEDMONT ENGINEERS & ARCHITECTS 420 PARK AVE., GREENVILLE, S.C.		DWN RMG CKD PD APPD JOB 20008 DATE Aug, 1967