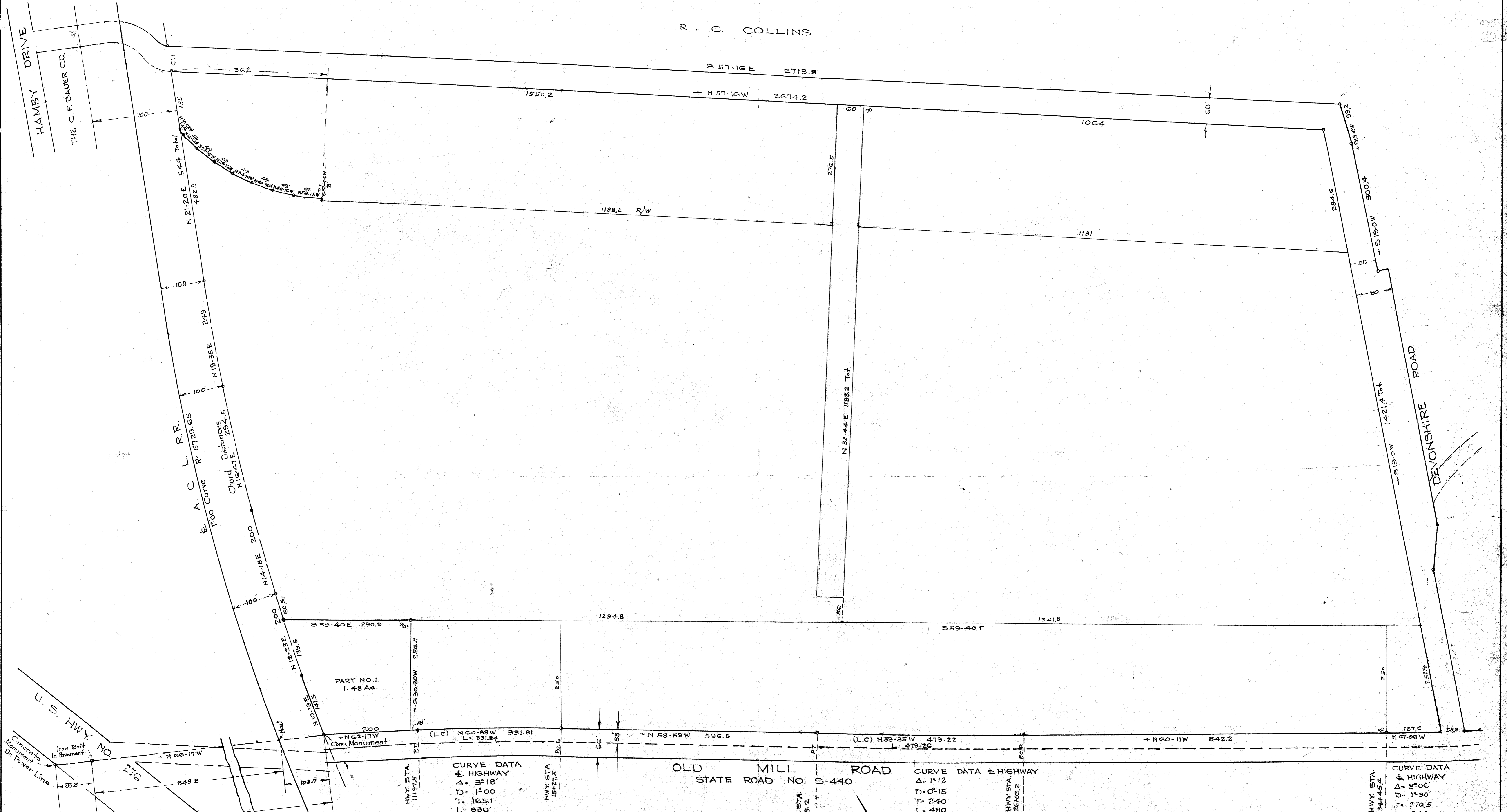


R. C. COLLINS



PART NO. 1.
1.48 Ac.

CURVE DATA
 # HIGHWAY
 Δ = 3° 18'
 D = 1° 00'
 T = 165.1
 L = 330'

CURVE DATA # HIGHWAY
 Δ = 1° 12'
 D = 0° 15'
 T = 240
 L = 480

CURVE DATA # HIGHWAY
 Δ = 8° 00'
 D = 1° 30'
 T = 270.5
 L = 540

PROPERTY OF
 ATLANTIC COAST LINE RAILROAD COMPANY
 GREENVILLE CO. S. C.

Scale 1"=100' February 1962

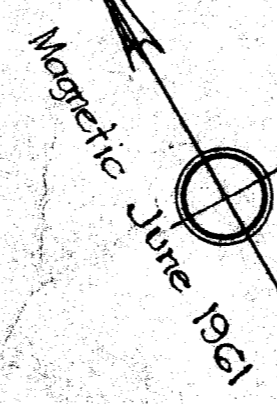
MAY 8 1973

31887

4P-39

DALTON & NEVES
 GREENVILLE, S.C.

FILED
 GREENVILLE S.C.
 MAY 8 4 01 PM '73
 DORRIS S. TANKERSLEY
 R.M.C.



Iron Pins at all Corners except as otherwise noted

79.100