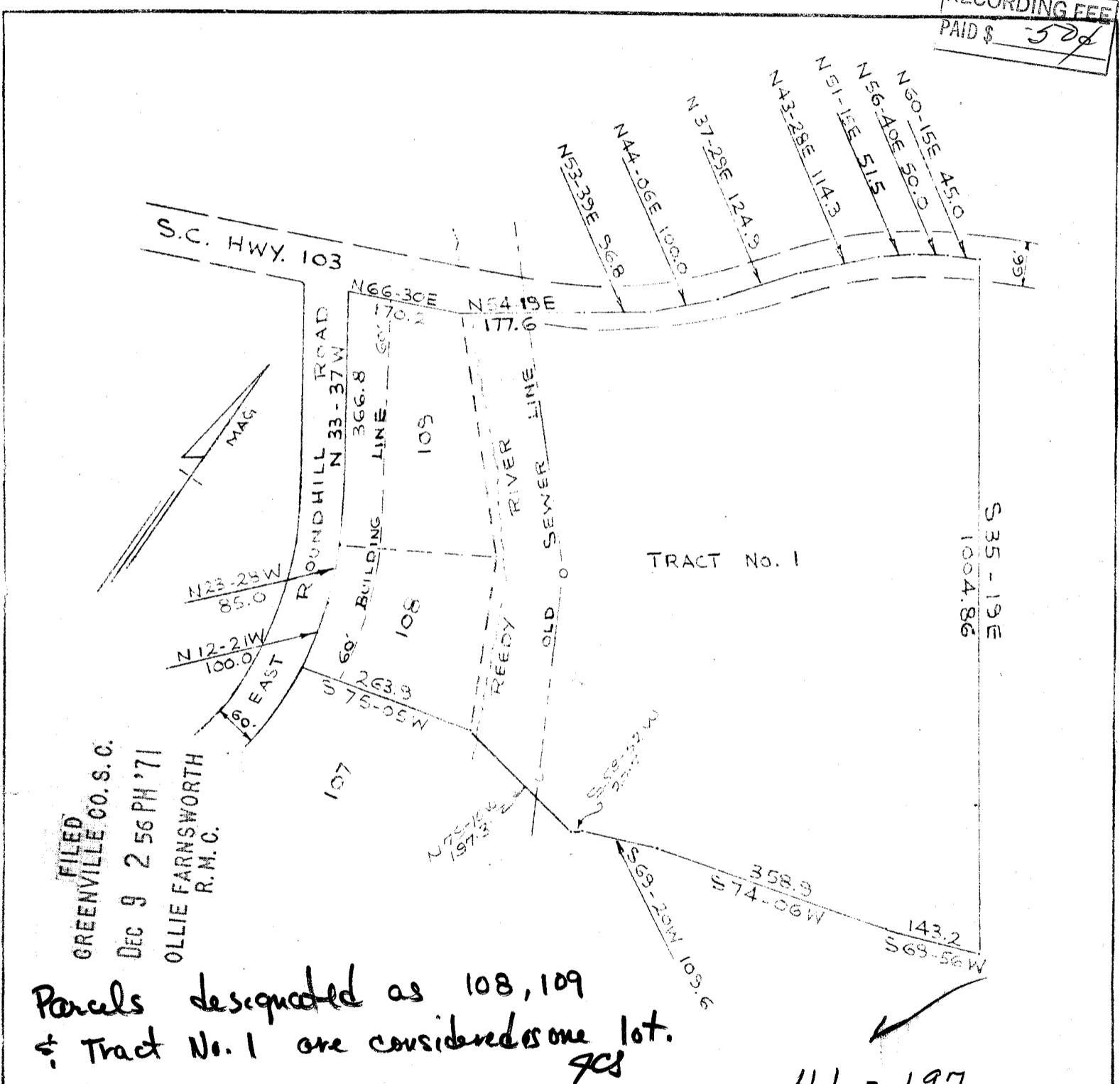


#15964 Filed This 9th day of Dec. 1971
 And Recorded in Vol. 44 Page 197 at 2:56 P.M.

Ollie Farnsworth
 Register Mesne Conveyance Greenville County, S. C.

RECORDING FEE
 PAID \$ 5.00



FILED
 GREENVILLE CO. S. C.
 DEC 9 2 56 PM '71
 OLLIE FARNSWORTH
 R. M. C.

Parcels designated as 108, 109
 & Tract No. 1 are considered as one lot.
 JCS

44-197

SURVEY FOR
 GREEN VALLEY ESTATES

THIS PLAT IS NOT A SUBDIVISION
 AS DEFINED BY THE GREENVILLE
 COUNTY SUBDIVISION REGULATIONS.
 12/9/71 J. Roman House
 Chairman, Secretary, or Director of
 Planning.
 Greenville County Planning Commission

Co., S. C.
 AUG. 4, 1969
 REV. OCT. 15, 1971

DEC 9 - 1971
 15964



PIEDMONT ENGINEERS AND ARCHITECTS
 GREENVILLE, S. C.

6724

197