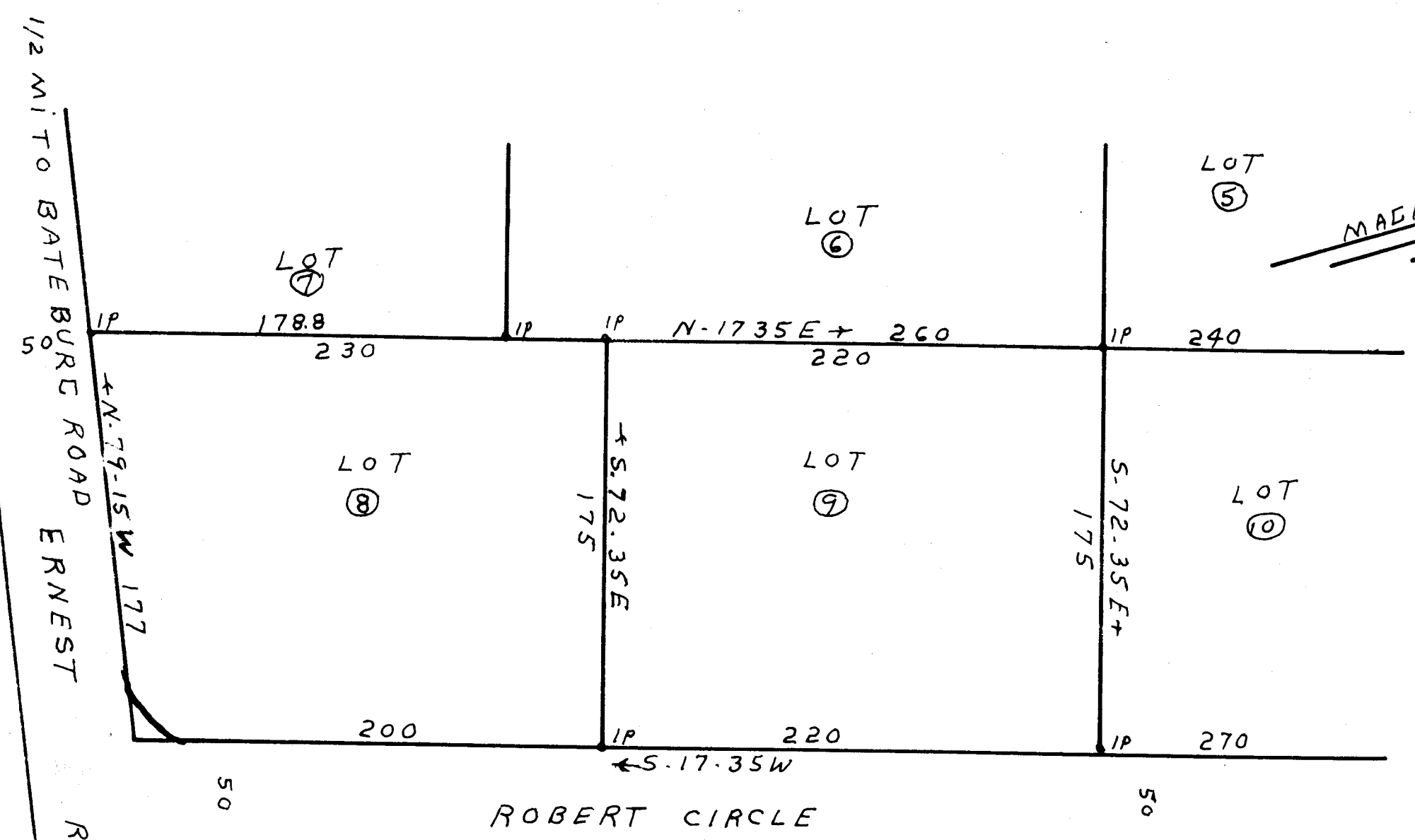
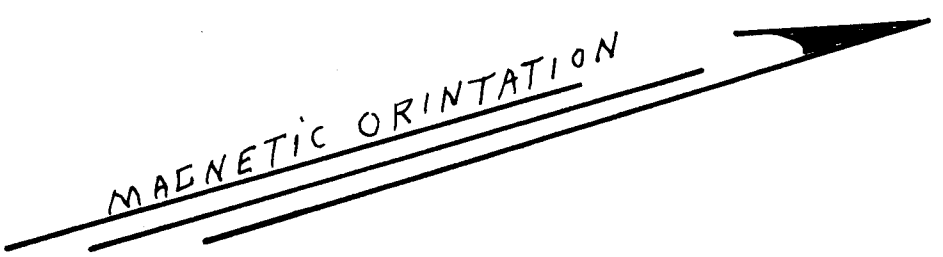


J. 181

MICROFILMED



48-195-13

THIS PLAT IS NOT A SUBDIVISION
 AS DEFINED BY THE GREENVILLE
 COUNTY SUBDIVISION REGULATIONS.
 6/13/72 *J. Coleman House*
 Chairman or Director of
 Planning.
 Greenville County Planning Commission

FILED
 GREENVILLE CO. S. C.
 JUN 13 10 40 AM '72
 OLLIE FARNSWORTH
 R.M.C.

33967

JUN 13 1972

RECORDING FEE
 PAID \$ 1.50

PLAT FOR		
ERNEST R COLEMAN		
BUTLER TOWNSHIP	SCALE 1" = 60'	DRAWN BY S.D. ATKINS
GREENVILLE CO. S.C.		REVISED
SEE PLAT FOR ERNEST R. COLEMAN		
DATED AUG. 8, 1969 BY W.N. WILLIS		
DATE 6-2-1972	APPROVED BY W.N. WILLIS SPARTANBURG S.C.	DRAWING NUMBER S.D. ATKINS FIELD
SC REG NO. 235		