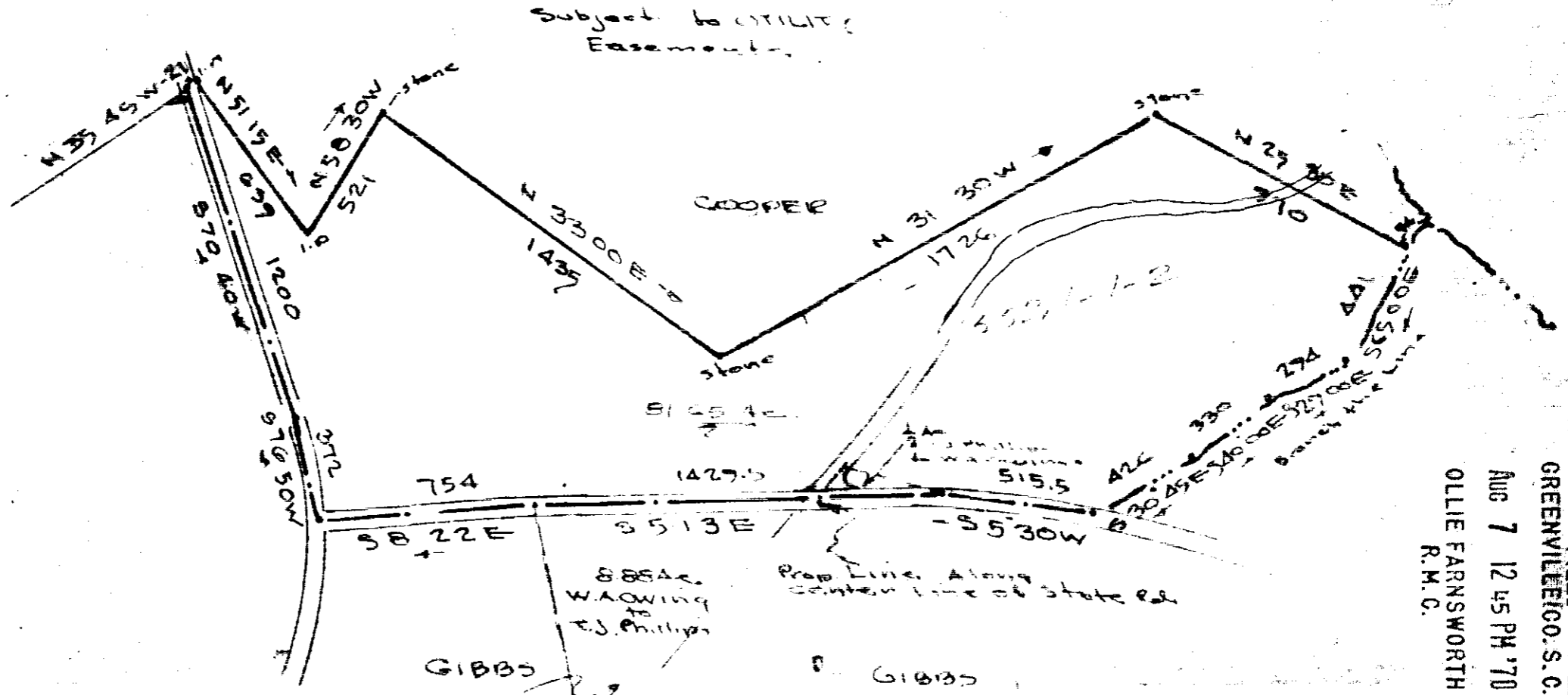


ORIGINAL ACREAGE = 90.5
 1/2 ACRE-PHILLIPS TOWINGS = 0.9
 8.88 ACRES-OWINGS & PHILLIPS = 8.88
 NET TOTAL ACRES = 81.65



#3121 Filed This 7 day of Aug 1970
 And Recorded in Vol. 4E Page 149 of 12:45 M.

Ollie Farnsworth
 Register Mens Conveyance Greenville County, S. C.



GREENVILLE CO. S. C.
 AUG 7 12 45 PM '70
 OLLIE FARNSWORTH
 R.M.C.

PROPERTY OF
FRANCES S. CROSSBY
GREENVILLE COUNTY S. C.
 Scale 1" = 500' July 31, 1970

Compiled from
 survey plots of
 others:

4E-149
 507

AUG 7 1970
 3121

BY JONES ENGINEERING SERVICES: