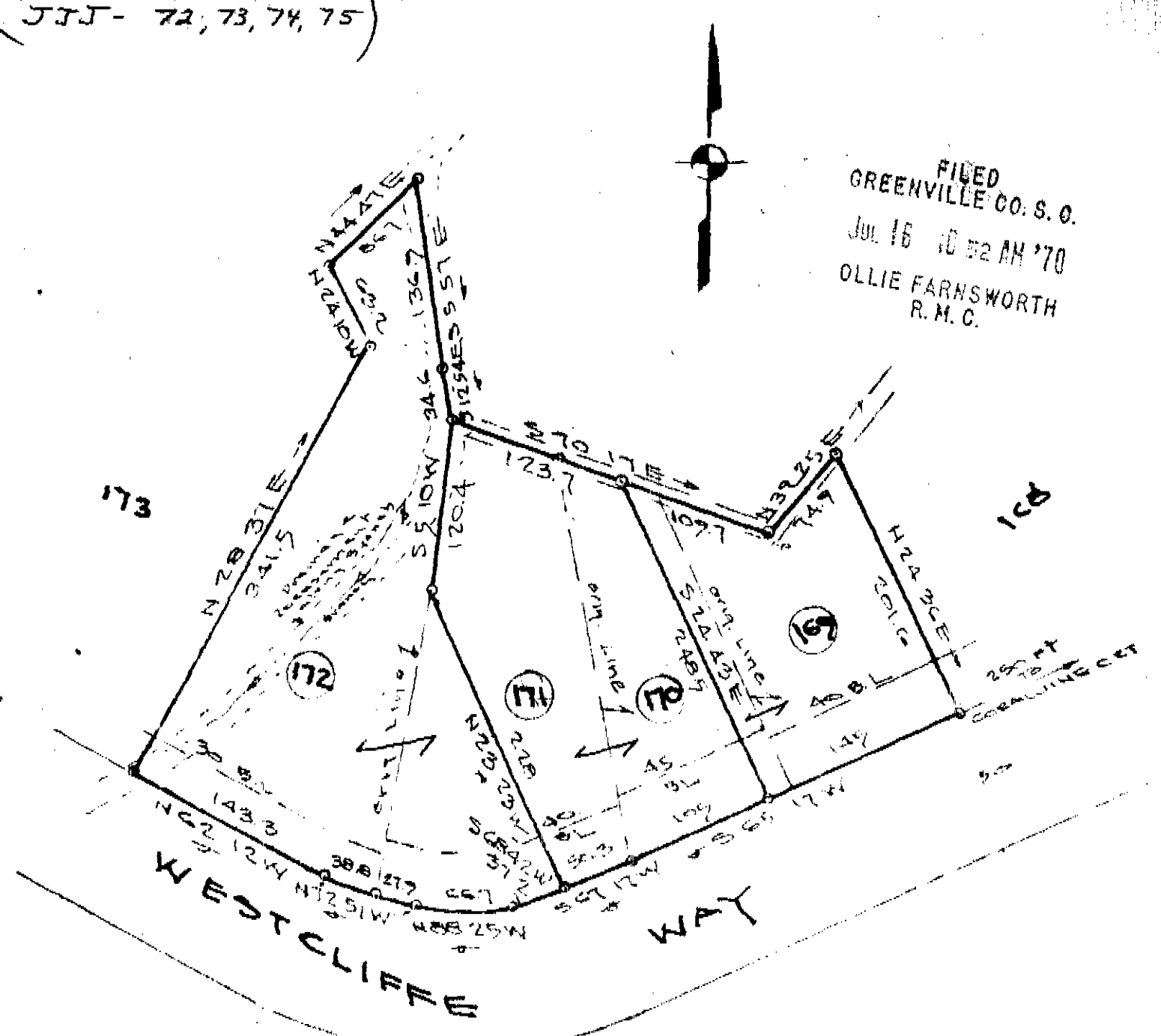


# 1212 Filed This 16 day of July 1970  
 And Recorded in Vol. 4E Page 113 at 10:52 A.M.

*Ollie Farnsworth*  
 Register Mesne Conveyance Greenville County, S. C.

RECORDED  
 (JJJ- 72, 73, 74, 75)



FILED  
 GREENVILLE CO. S. C.  
 JUL 16 10 52 AM '70  
 OLLIE FARNSWORTH  
 R. M. C.

NOTE ALL DRAINAGE  
 EASEMENTS AS SHOWN  
 ON ORIGINAL SUBDIVISION  
 RECORDED IN R.M.C.O.

4E-113  
 PLAT SHOWING

THIS PLAT IS NOT A SUBDIVISION  
 AS DEFINED BY THE GREENVILLE  
 COUNTY SUBDIVISION REGULATIONS.  
 7/15/1970 *[Signature]*  
 Chairman, Secretary or Director of  
 Planning.  
 Greenville County Planning Commission

REVISIONS OF LOTS  
 169 ; 170 ; 171 & 172  
 WESTCLIFFE - SEC. 2  
 GREENVILLE CO., S.C.  
 scale 1/2" = 100' JULY 10-1970  
 JUL 16 1970 1212

JONES ENGINEERS, SEQUOIA