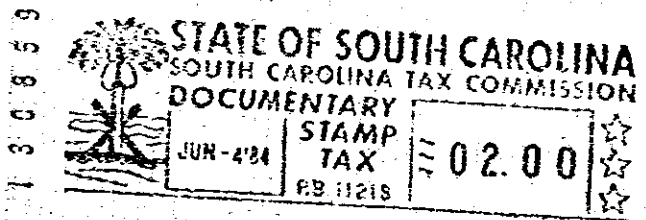
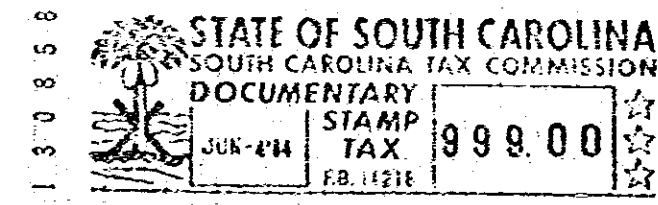
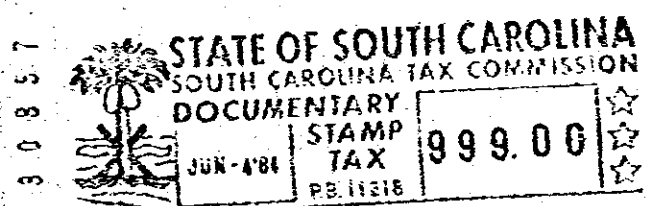


ALL that parcel or tract of land containing 99.19 acres, more or less, situate Northeast of U.S. Highway No. 276, approximately two miles northwest of the Town of Fountain Inn, in Fairview Township, Greenville County, South Carolina, and having according to a survey entitled, "Property of Woodside Mills, Inc.," made by John A. Simmons, Surveyor, dated May 26, 1984, recorded in Plat Book 10K at Page 88, in the RMC Office ofr Greenville County, South Carolina, the following metes and bounds, to-wit:

BEGINNING at an iron pin on the northeastern side of U.S. Highway 276, joint corner of lot belonging to Transcontinental Gas Pipe Line Corp., and running thence N. 43-35 E., 492.10 feet to an iron pin; thence N. 50-23 E., 1888.81 feet to a point in the center of the right-of-way for Seaboard Coast Line Railroad; thence along said railroad right-of-way the following courses and distances: S. 28-02 E., 255.94 feet to a point; thence S. 23-22 E., 210.73 feet to a point; thence S. 20-06 E., 125.46 feet to a point; thence S. 16-40 E., 200.95 feet to a point; thence S. 12-54 E., 190.08 feet to a point; thence S. 9-02 E., 200.33 feet to a point; thence S. 4-39 E., 190.34 feet to a point; thence S. 1-08 E., 230.53 feet to a point; thence S. 0-08 E., 767.93 feet to a point; thence S. 1-02 E., 220.24 feet to a point; thence S. 6-18 E., 219.64 feet to a point; thence S. 12-06 E., 158.92 feet to a point; thence S. 14-48 E., 31.85 feet to a point in a road; thence along said road the following courses and distances: S. 75-05 W., 86.05 feet to a point; thence S. 57-35 W., 86 feet to a point; thence S. 48-49 W., 647.92 feet to a point at northeastern edge of the right-of-way for U.S. Highway No. 276; thence along a northeastern edge of the right-of-way for U.S. Highway No. 276 N. 41-04 W., 1357.29 feet to a point; thence N. 48-54 E., 15 feet to a point; thence N. 41-06 W., 601.70 feet to a point; thence S. 48-54 W. 15 feet to a point; thence N. 41-07 W., 506.30 feet to an iron pin, the point of beginning.

This is the same property conveyed to Woodside Mills, Inc. by Dan River, Inc., a Virginia corporation, by deed dated June 4<sup>th</sup>, 1984, recorded in the Office of the R. M. C. for Greenville County, South Carolina on June 4, 1984, in Deed Book 1214, at pages 317.



RECORDED JUN 4 1984 at 6:09 P.M.

38490