

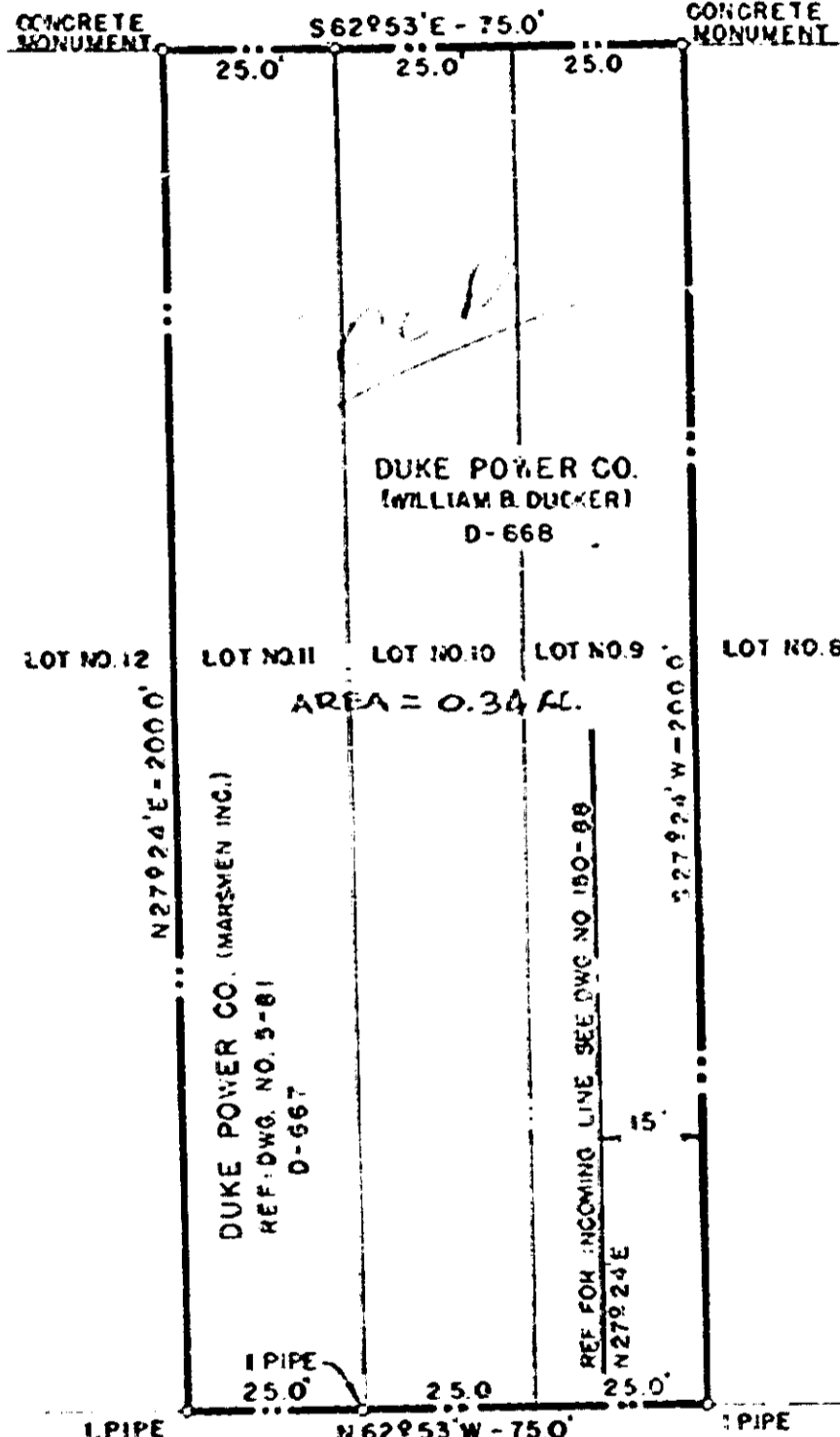
1528 36

BUNCOMBE ROAD

TO GREENVILLE

SIDEWALK

N



DUKE POWER CO.
(WILLIAM B. DUCKER)
D-668

LOT NO. 12 LOT NO. 11 LOT NO. 10 LOT NO. 9 LOT NO. 8

AREA = 0.34 AC.

DUKE POWER CO. (MARSHEN INC.)
REF. DWG. NO. 5-81
D-667

REF. FOR INCOMING LINE SEE DWG. NO. 150-88

Howard M. Howard
S.C., R.L.S. No. 5587
Duke Power Co.
Charlotte, NC.

NOTE:
PLOTTED FROM
MAP MADE BY
DALTON B. NEVES, DATED
MAY 1944, GREENVILLE, S.C.
REF:
SEE PLAT BOOK O, PAGE 7
GREENVILLE COUNTY REGISTRY
REF:
SEE MISC. DWG. NO. 291, 150-88 & 52-129

NOTE: DEEDED TO O. KEITH
PICKELSIMER & CHARLES
R. PICKELSIMER 7/16/80.

NOTE:
KNOWN AS
SANS SOUCI RETAIL STATION
(ADDED 1-19-50)

DUKE POWER COMPANY
SUBSTATION LOT
ACQUIRED FROM
WILLIAM B. DUCKER
GREENVILLE, S.C.

NOTE:
CONCRETE MONUMENTS
SET 1-19-50 ADDED 1-23-50
FOR LAYOUT OF STRUCTURES SEE
DWG 5-54

RECORDED DEC 18 1949
at 1:00 P.M.

SCALE: 1" = 30'
BOOK NO. 297 DEC. 16, 1949
FILE NO. 5-82-A

15283

D-667 & D-668

0036

4328 RV-2