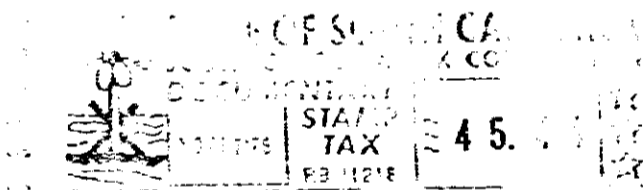


BOOK 1450 PAGE 591

(Continued from page 1)

BEGINNING at a point on Stoney Creek Drive at the joint corner of Lots 110 and 111 and running thence with the common line of said lots, N. 47-0 W., 165 feet to the joint rear corner of said lots; thence turning and running S. 41-0 W., 115 feet to a point on Piney Grove Road; thence turning and running with said Road, S. 49-0 E., 140 feet to a point along the intersection of Stoney Creek Drive and Piney Grove Road; thence with the curvature of the intersection of said roads, N. 86-0 E., 35.3 feet to a point on the intersection of said roads; thence with Stoney Creek Drive, N. 41-0 E., 90 feet to the point of beginning.

This is the same property conveyed to the mortgagor herein by deed of Danco, Inc. dated November 20, 1978 and recorded herewith.



RECORDED NOV 17 1978

at 1:57 P.M.

15512

4328 RV-2