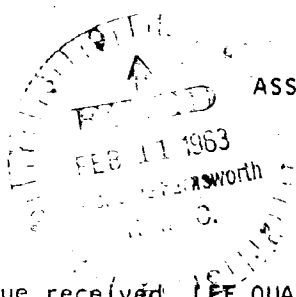


FEB 11 1963

ASSIGNMENT



State of Alabama
County of Mobile

For value received, LEE QUALITY HOMES CORPORATION, a Delaware corporation, does hereby transfer, sell, assign, convey and set over to U-Finish Homes, Inc., its successors, representatives and assigns, all its rights, title and interest in the Security Instrument (whether designated a Security Deed, Mortgage, Deed of Trust, or otherwise) from Margaret Kellett and Ruth Kellett, dated October 23, 1962 and recorded in Volume 905 Page 294-296 of the appropriate official records in the jurisdiction in which the property lies.

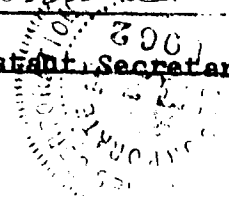
The said assignor specifically transfers, sells, conveys and assigns to the above assignee, its successors, representatives and assigns, all the rights and powers of the assignor under, or by virtue of, said Security Instrument, the note secured thereby and the indebtedness represented by said note.

The said note and indebtedness have been transferred and assigned by the assignor to the assignee and this assignment has been made to secure the assignee, its successors, representatives and assigns, in the payment of said note.

IN WITNESS THEREOF, the above named assignor has caused this instrument to be executed in its behalf by its duly authorized officer, and has caused its corporate seal to be affixed this 8th day of December, 1962.

W. S. Wilson
Witness
W. S. ...
Witness

LEE QUALITY HOMES CORPORATION
By W. S. ...
Its Assistant Secretary



State of Alabama
County of Mobile

I, the undersigned, a Notary Public in and for said County and said State, hereby certify that _____, whose name as _____ of LEE QUALITY HOMES CORPORATION, a Delaware corporation, is signed to the foregoing transfer and who is known to me, acknowledged before me on this day that being informed of the contents of the transfer, he, as such officer and with full authority executed the same voluntarily for and as the act of said corporation.

Given under my hand and official seal this _____ day of _____, 1962.

Notary Public