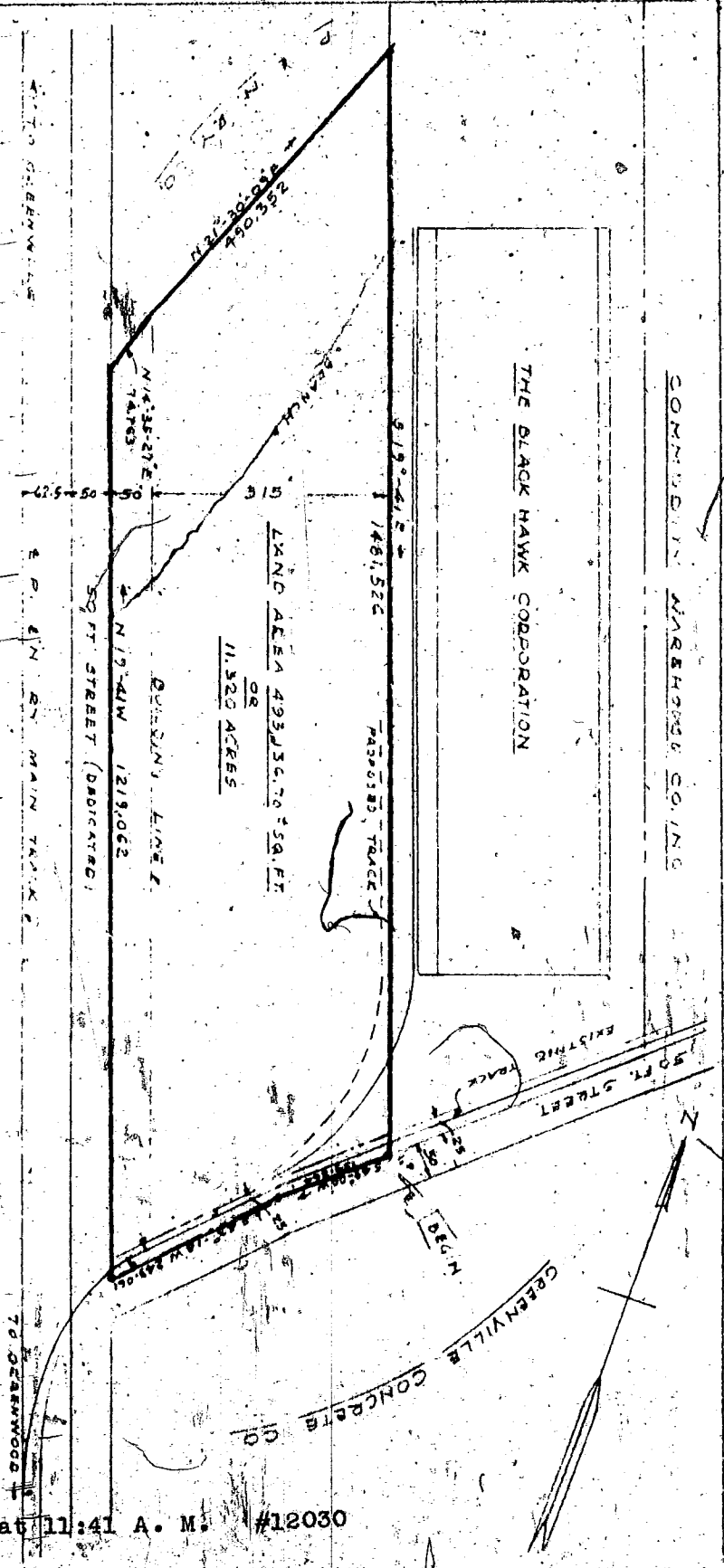


PIEDMONT AND NORTHERN RAILWAY COMPANY
PLAT SHOWING PROPERTY TO BE CONVEYED
TO
J.P. STEVENS & CO., INC.
WHITE HORSE INDUSTRIAL DISTRICT, GREENVILLE COUNTY, S.C.
SCALE 1" = 200'
OFFICE OF CHIEF ENGINEER CHARLOTTE, N.C.
AUGUST 30 1961



DRWG-F-1415