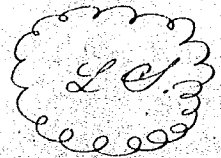


South Carolina }
Greenville District } By Robt M. May Esq. Off. Commissioner of Locations for said District.

To any Lawful Surveyor

You are hereby required to admeasure and lay out unto William Lynch a Tract of Land not exceeding One Hundred Acres, observing the Surveyor General's Instructions in laying out the same, and return a Plat thereof certified by you into my Office, within Two Months from the date hereof.



Given under my hand and Seal of Office, this 16th day of October A. D. 1841. Robt M. May
c. c. H. Sec. of Off.

South Carolina }
Greenville District } By Robt M. May Esq. Off. Commis-
sioner of Locations for said District

To any Lawful Surveyor

You are hereby required to admeasure and lay out unto Mapey A. Jackson a Tract of Land not exceeding One Hundred Acres, observing the Surveyor General's instructions in laying out the same, and return a Plat thereof certified by you into my Office within Two Months from the date hereof.



Given under my Hand and Seal of Office, this 19th day of October A. D. 1841. Robt M. May
c. c. H. Sec. of Off.