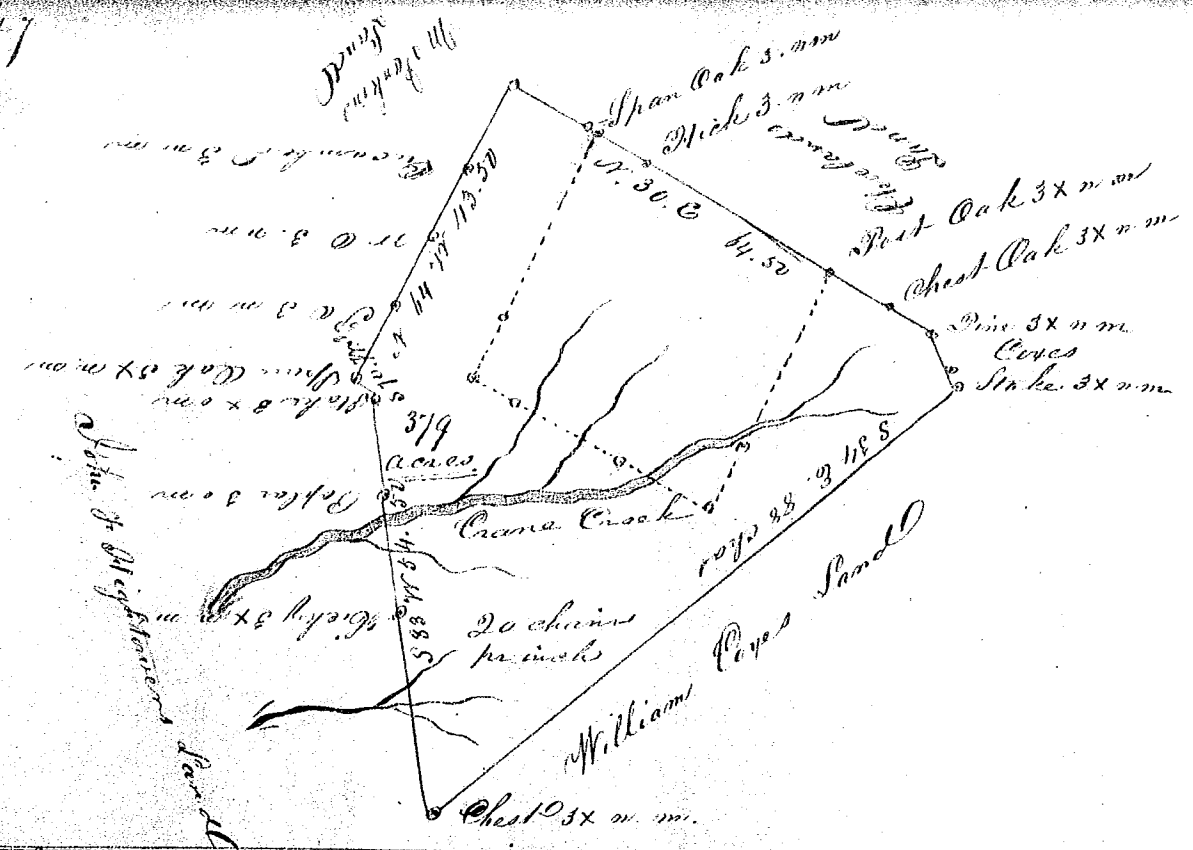


147



South Carolina Pursuant to a warrant from William Blusington Esq. Commissioner of Locations in the District of Greenville dated the 26th day of December 1843. I have admeasured and cut out unto John C. Hightower a tract of three hundred and seventy seven acres of land situate in said District on the west side of the north fork of Saluda River on both sides of Crane Creek waters of the north fork of Saluda River bounded by lines running S W by John C. Hightowers Land N N W by M. Sunkins Land N E by Cleavelands and William Coxes Land including a tract of one hundred and twenty four acres granted to Anna Gibson the 1st day of July 1799. the object of the present survey being to obtain a new grant for the whole. The whole having such form and marks as the above plat represents

Surveyed January 1st 1844

Recorded 20 Jan 1844

J. C. Hoyt D. D.