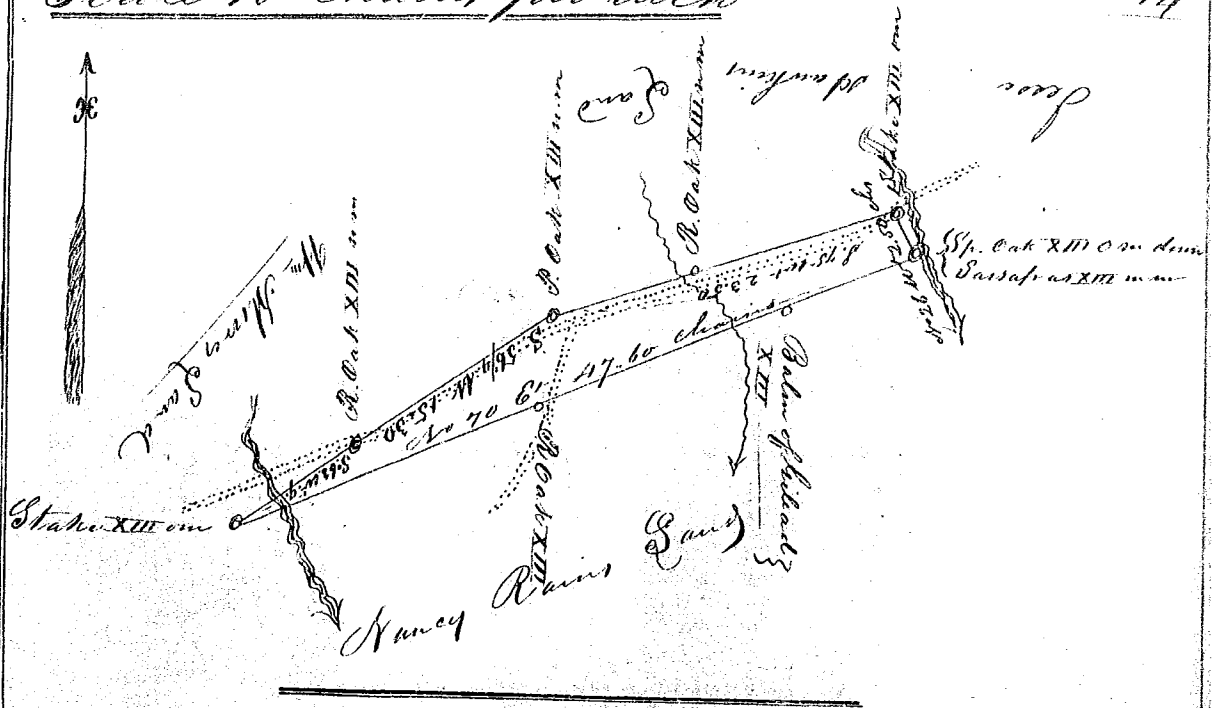


Scale 10 Chains per inch

411



South Carolina,

Pursuant to a warrant from
William Blasingame Esq. Ex Off. Commissioner
of Locations in the District of Greenville, dated
the twentieth day of January 1843. I have ad-
measured and laid out unto Nancy Rains a
tract of Land containing fourteen acres, situated
in the said District on Branches of Brushy Creek
Branch waters of Enow River, bounded by a line
running N.E. by Land surveyed for Nancy Rains
and N.W. & S.W. by Land surveyed for Jesse Hawking
& Wm Moore and hath such form and marks as
the above plat represents, Surveyed the twenty first
day of June 1843.

Wm. D. Arnold & Co
S.S.

²²
Recorded for 17th April 1843