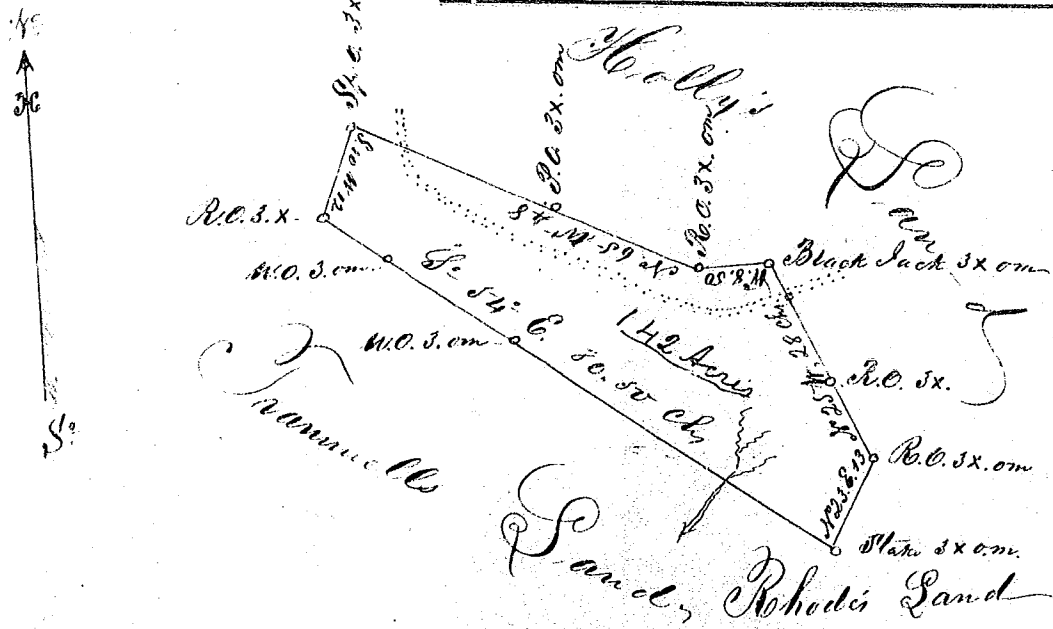


Scale 20. Chains to an inch



South Carolina

Pursuant to a warrant from the
Blagame Commission of Location in the District
of Greenville, Dated the 11th day of January 1843,
I have admeasured and laid out unto ^{Wm} M^rson
Middleton a tract of Land containing one hundred
and forty two acres situate in the said District on
Mush Creek, Branch water of Tyger River, Bounded
by lines running N. E., N. W., & West by land owned by
John Holly, S. W. by Land owned by Frammel, &
East such form & marks as the above plat represents

Surveyed 16th July 1843

C. M. Sandford

Deputy Surveyor