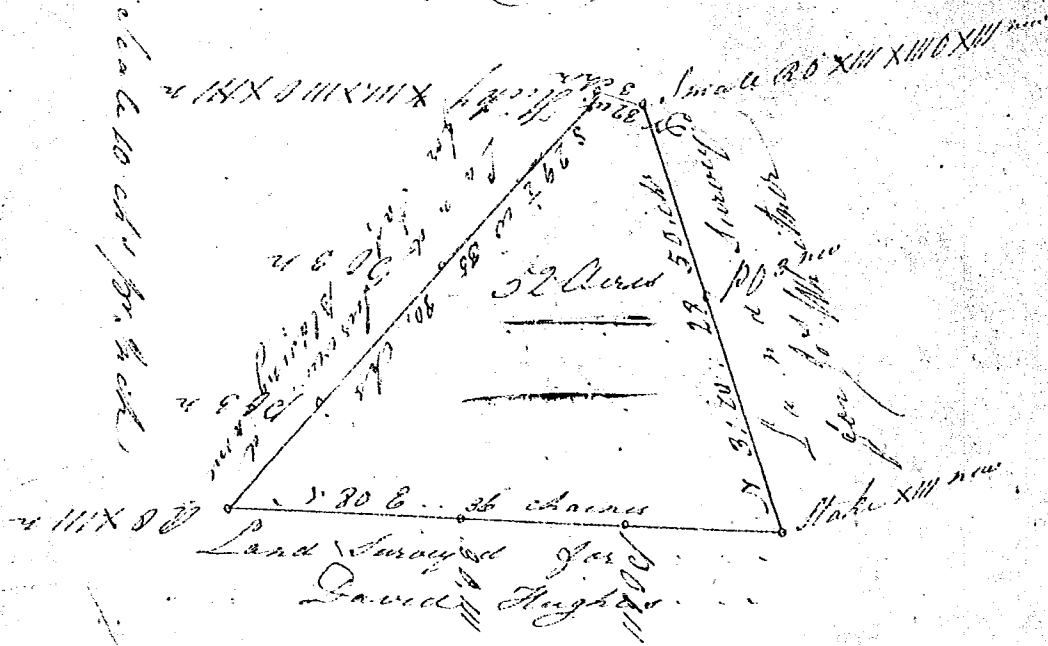


(150)



South Carolina

Pursuant to a warrant from John Young Esq. Comr. of Locations in the District of Greenville dated the 25th day of Novr 1831. I have administered and laid out unto George F. Townes a tract of Land containing fifty two acres, Situate in said District on a Ridge between Long Branch, and Rudy River and hath such Corn, Marks and Brandings as the above Plat represents.

Surveyed the 29th day of Novr 1831 by  
 Thos. Hutson L.S.

Recorded the 2nd day of Decr 1831 by  
 John Young, C. Solms