

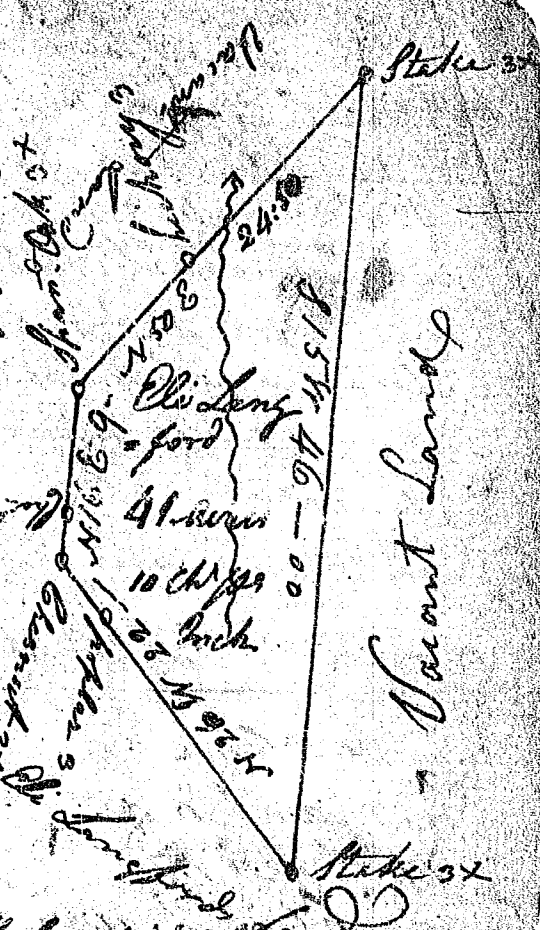
North Carolina

(131)

Pursuant to a warrant from  
 W.D. H. C. L. for G.D. dated the 30<sup>th</sup>  
 July 1804. I have admeasured & laid  
 out unto Eli Longford a tract of land  
 Containing 41 acres situated in the 2<sup>d</sup>  
 district on waters of Galsi creek  
 of Chisholm <sup>river</sup> of Saluda River  
 bounded by a line running N 1/2 by  
 Eli Longford N 1/2 by John Ford  
 land - all other sides by Vacant land  
 & hath such form & marks as the  
 above plat represents.

Surveyed the 18<sup>th</sup> July 1804

Recorded 2<sup>nd</sup> July 1804 Wm H. Cooke Surveyor



North Carolina

Pursuant to a warrant  
 from W.D. Thomas 6<sup>th</sup>  
 for G.D. dated the 30<sup>th</sup>  
 April 1804. I have  
 admeasured & laid out  
 unto Jonathan Potts  
 a tract of seventy acres  
 of land situated in said 2<sup>d</sup>  
 on branches of Galsi creek of  
 Middle fork of Saluda river  
 bounded by a line running N 1/2 by  
 land laid out to Robert Bailey  
 N 1/2 by land laid out to Ephraim  
 White, N W unknown land & all other sides Vacant Land  
 & hath such form & marks as the above plat represents.

