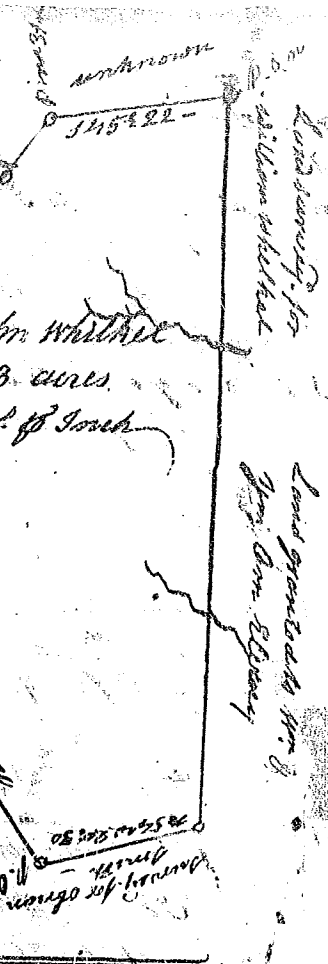


South Carolina. Pursuant to an agreement from John Thomas, Comr. of Land dated 7<sup>th</sup> Nov<sup>r</sup> 1802 I have admeasured and laid out unto John Whithel a tract of three hundred & ninety three acres of land in Congee District on the waters of Rocky-creek & the waters of that creek waters of that creek bounded N.W. & N. by Doit's - W. by Doit's - N.E. & E. by land unknown S. by William Whithel & William Adam = all Adam's land with the various courses and distances = acres from P. Whithel R. D. (corner with P. land) to the beginning and hath such form and marks as the above Plat represents Survey 19<sup>th</sup> January 1802 Charles Boyd Esq. Recorded 10<sup>th</sup> febr<sup>y</sup> 1802



South Carolina - Pursuant to agreement from John Thomas, Comr. of Land N side Saluda's upper end dated 8<sup>th</sup> febr<sup>y</sup> 1802 I have admeasured and laid out unto Samuel Moros a tract of two hundred and ninety seven acres of land in Greenville District on some branches of Rocky-creek and a small branch of Cripple-creek of Meedy River, bounded by lines bearing S.W. by Ezekiel Henderson & John Ashmore lands S.E. by Samuel Steck's land N.E. by John Brasler's and John Alexanders lands S.W. & N.W. by Samuel Moros's own Land, and hath such shape & marks as the above Plat represents, - Survey 11<sup>th</sup> febr<sup>y</sup> 1802 James Hilligore Esq. Recorded 15<sup>th</sup> febr<sup>y</sup> 1802, -

