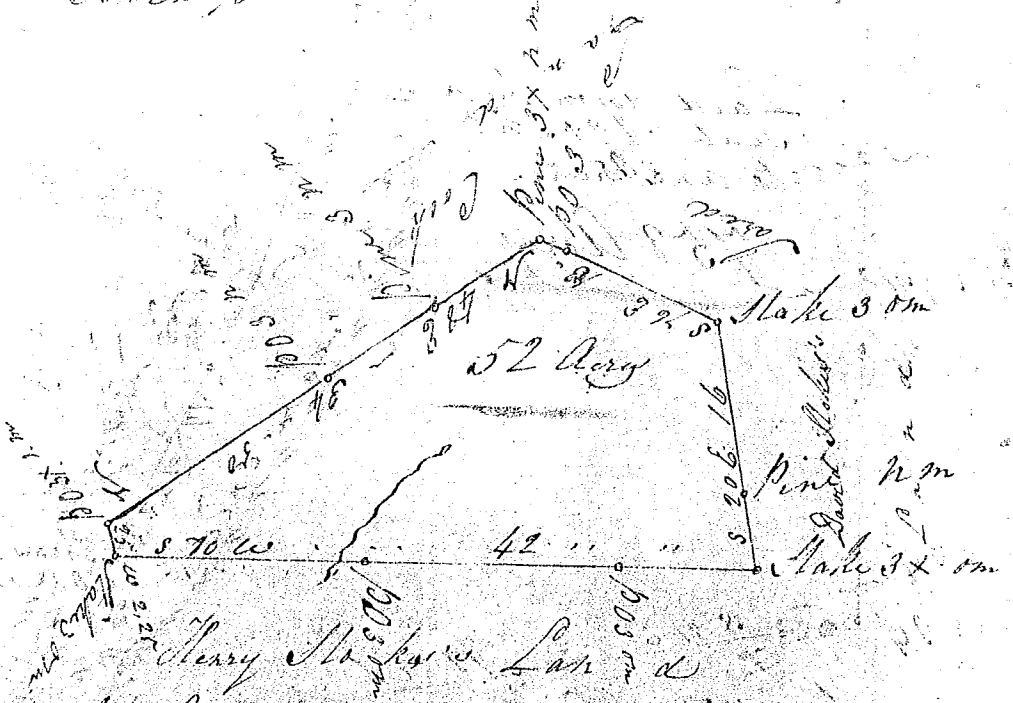


and down at (149)
 Ten Ch. Dr. Fred }



South Carolina
 Greenville District
 Pursuant to a warrant from John
 Young Esq, Commissioner of Locations for the District
 I have caused to be measured and laid out unto
 Henry Stokes a tract of about fifty two acres of land
 on small branch of Wasselink Creek, waters of Gilous
 Creek, bounded N.W. by said Henry Stokes Land, S.W. by
 David Stokes Land, E. by Cooks Land, and has full
 legal and marsh, butting & bounding as the above
 Plat represents;

Surveyed & Certified by me this 30th
 day of April, 1788.

J. Griffith Esq

Recorded the 5th day of ~~the~~ May 1788

by,

John Young C. Lewis

handed to self